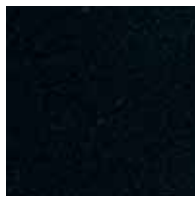


# FINITIONS ·

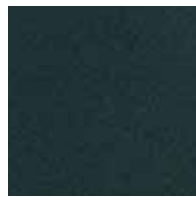
## Laques texturées (pour les structures)



**Black**  
RAL 9005  
n



**White**  
RAL 9016  
b



**Anthracite**  
RAL 7016  
G



**Grey**  
RAL 7004  
T



**Sand**  
RAL 7032  
2



**Sky**  
PANTONE 5435C  
f



**Ocean**  
PANTONE 7545C  
U



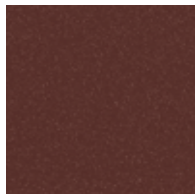
**Navy Blue**  
PANTONE 533C  
g



**Olive**  
PANTONE 5753C  
w



**Mustard**  
PANTONE 1245C  
P



**Wine**  
PANTONE 4975C  
z



**Teja**  
PANTONE 174C  
d

*White, black and grey in gloss finish: under special request of customer /  
Blanche, noir et gris en finition laque brillante : sur demande spécifique du client*

## Polypropylène - Polypropylen (coques)



**Black <sup>(1)</sup>**  
RAL 9005  
PP400



**White <sup>(1)</sup>**  
RAL 9016  
PP003



**Anthracite <sup>(1)</sup>**  
RAL 7016  
PP414



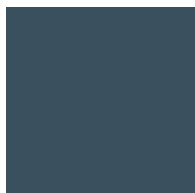
**Grey <sup>(1)</sup>**  
RAL 7004  
PP017



**Sand <sup>(1)</sup>**  
RAL 7032  
PP015



**Sky**  
PANTONE 5435C  
PP032



**Ocean**  
PANTONE 7545C  
PP031



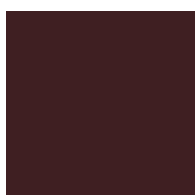
**Navy Blue**  
PANTONE 533C  
PP037



**Olive**  
PANTONE 5753C  
PP033



**Mustard**  
PANTONE 1245C  
PP038



**Wine**  
PANTONE 4975C  
PP035



**Teja**  
PANTONE 174C  
PP036

<sup>(1)</sup> Seules couleurs disponibles pour : Bio, Eina, Oh!

**FENIX NTM® Collections:** Pile, Punto 21, Lottus 21, Lottus AL, Iron, LTS System, Taber, Tema.



**B** White with White color core / Blanc avec coeur blanc



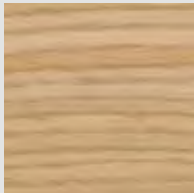
**N** Black with black color core / Noir avec coeur noir

**Wood - Bois**

**Collections:** Punto 21, Iron, Lottus Wood, Lottus Lounge, Lottus Conference, LTS System, Coma\*, Kaiak, Taber.

**Caddy**

**Lottus 21**



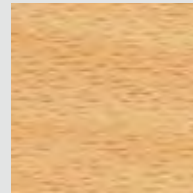
**x** (Oak, Chêne)



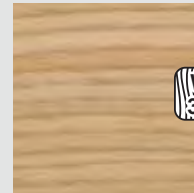
**Y** (Birch, Bouleau)



**N** (Oak, Chêne)



**H** (Beech / Hêtre)



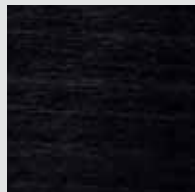
**3D449** (Oak, Chêne)

\* **Coma:** Only **x** and **N** / Seulement **x** et **N**

**Noa**

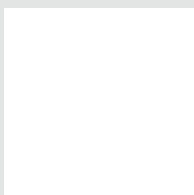


**58** (Birch, Bouleau)

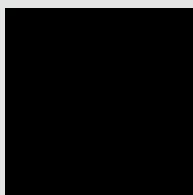


**69** (Birch, Bouleau)

**Melamine Collections:** Punto 21, Lottus 21, Lottus AL, Iron, Folio, Way, Taber.



**B**

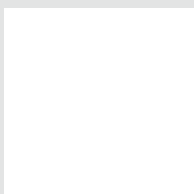


**N**

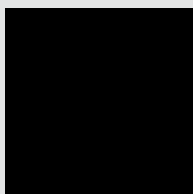


**R** (Roble, Oak, Chêne, Eichenholz)

**HPL COMPACT Collections:** Pile, Punto 21, Lottus 21, Lottus AL, Iron, Way, LTS System, Taber, Tema.



**B**



**N**



**R\*** (Roble, Oak, Chêne, Eichenholz)

\*Maximum size 1250 x 1250 mm

# Babel/Gr.C by Enea Fabric

## Babel - Product information

### Technical information

**Composition Surface/Backing**  
100% Polyester

**Roll Width**  
142 cm (+/-3%)

**Roll Length (average)**  
40/45m

**Weight**  
440g/lm (+/-5%)

**Tensile Strength**  
Warp 1311N/33% EN ISO 13934-1  
Weft 755N/27,4% EN ISO 13934-1

**Tear Growth Resistance**  
Warp 162,4N EN ISO 13937-3  
Weft 129,8N EN ISO 13937-3

**Seam Slippage Resistance**  
Warp 3,5mm EN ISO 13936-2  
Weft 4mm EN ISO 13936-2

**Abrasion Test**  
90.000 EN ISO 12947-1,2

**Pilling**  
3-4 EN ISO 12945-2

**Colour Fastness to Rubbing**  
5 DRY EN ISO 105-X12  
4-5 WET EN ISO 105-X12

**Colour Fastness to Artificial Light**  
4 EN ISO 105-B02

## Applications & Features

**Breathable**

### Fire Proof Norms

BS 5852 Part 1 - Cigarette Test - PASS  
EN 1021-1 - Cigarette Test - PASS  
CA Tech. Bull.117 / NFPA - Cigarette Test  
- PASS

### Environment

REACH Compliant  
Confidence Textiles according to  
OEKO-TEX Standard 100

### Clean & Care recommendations

**Easy to Clean:**

Promptly remove any excess liquid or residue with a clean cloth.

Use a wet cloth with 5% neutral soap, press gently and rub in circular movements.

Recommend using a 100% cotton cloth and a brush if necessary.

Frequent wash may affect the performance of the treatment Easy to Clean.

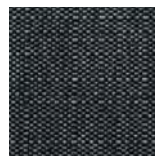
The analytical results are referred only to the sample tested.



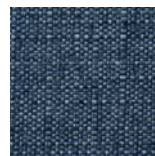
EBO02



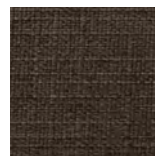
EBO04



EBO05



EBO06



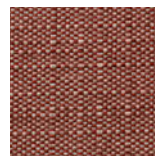
EBO11



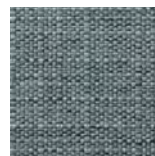
EBO26



EBO32



EBO38



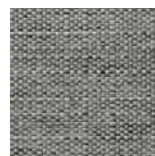
EBO40



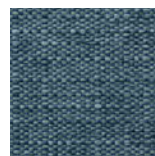
EBO41



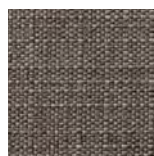
EBO42



EBO43



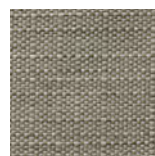
EBO44



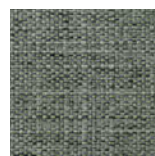
EBO46



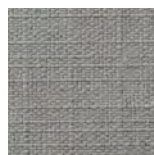
EBO48



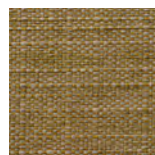
EBO49



EBO54



EBO55



EBO57

# Seattle/Gr.C by Enea Fabric

## Seattle - Product information

### Technical information

#### Composition Surface/Backing

100% Polyester

#### Roll Width

142 cm (+/-2%)

#### Roll Length (average)

40/45m

#### Weight

653g/lm (+/-5%)

#### Tensile Strength

Warp 2041N/48,7% EN ISO 13934-1

Weft 1057N/49,5% EN ISO 13934-1

#### Tear Growth Resistance

Warp 356,5N EN ISO 13937-3

Weft 297N EN ISO 13937-3

#### Seam Slippage Resistance

Warp 1,8mm EN ISO 13936-2

Weft 2mm EN ISO 13936-2

#### Abrasion Test

90.000 EN ISO 12947-1,2

#### Pilling

4 EN ISO 12945-2

#### Colour Fastness to Rubbing

5 DRY EN ISO 105-X12

4 WET EN ISO 105-X12

#### Colour Fastness to Artificial Light

5 EN ISO 105-B02

## Applications & Features

### Breathable

### Fire Proof Norms

BS 5852 Part 1 - Cigarette Test - PASS

EN 1021-1 - Cigarette Test - PASS

CA Tech. Bull.117 / NFPA - Cigarette Test  
- PASS

### Environment

REACH Compliant

Confidence Textiles according to

OEKO-TEX Standard 100

### Clean & Care recommendations

Easy to Clean:

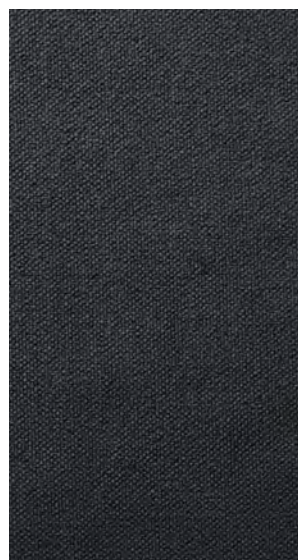
Promptly remove any excess liquid or residue with a clean cloth.

Use a wet cloth with 5% neutral soap, press gently and rub in circular movements.

Recommend using a 100% cotton cloth and a brush if necessary.

Frequent wash may affect the performance of the treatment Easy to Clean.

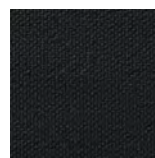
The analytical results are referred only to the sample tested.



ES001



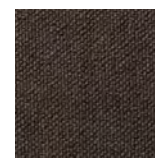
ES002



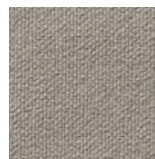
ES005



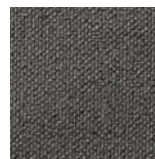
ES009



ES011



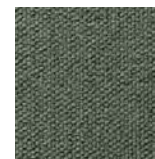
ES012



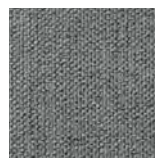
ES019



ES020



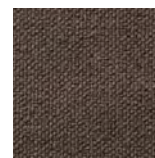
ES022



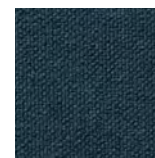
ES026



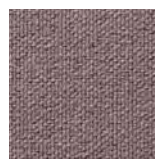
ES028



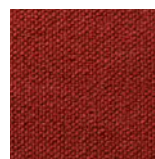
ES030



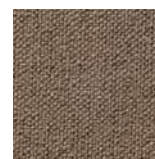
ES034



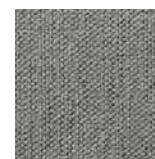
ES036



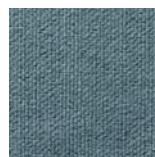
ES038



ES041



ES042



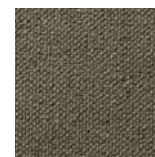
ES044



ES047



ES050



ES051



ES057

# Paris/Gr.C by Enea Fabric

## Paris - Product information

### Technical information

**Composition Surface/Backing**  
100% Polyester - Velours

**Roll Width**  
140 cm (+/-3%)

**Roll Length (average)**  
40/60m

**Weight**  
520g/lm (+/-5%)

**Tensile Strength**  
Warp 528N/31,6% EN ISO 13934-1  
Weft 504N/14,2% EN ISO 13934-1

**Tear Growth Resistance**  
Warp 42N EN ISO 13937-3  
Weft 66,5N EN ISO 13937-3

**Seam Slippage Resistance**  
Warp 2mm EN ISO 13936-2  
Weft 2mm EN ISO 13936-2

**Abrasion Test**  
>100.000 EN ISO 12947-1,2

**Pilling**  
5 EN ISO 12945-2

**Colour Fastness to Rubbing**  
5 DRY EN ISO 105-X12  
5 WET EN ISO 105-X12

**Colour Fastness to Artificial Light**  
5 EN ISO 105-B02

## Applications & Features

**Breathable**

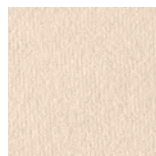
**Fire Proof Norms**  
BS 5852 Part 1 - Cigarette Test - PASS  
EN 1021-1 - Cigarette Test - PASS  
CA Tech. Bull.117 / NFPA - Cigarette Test - PASS

**Environment**  
REACH Compliant  
Confidence Textiles according to  
OEKO-TEX Standard 100

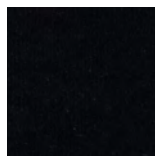
**Clean & Care recommendations**  
Frequent wash may affect the performance of the product.  
To remove dust use a vacuum cleaner.  
Any stain, spills or soiling should be cleaned up promptly with a neutral soap solution using a cloth in smooth circular movements.  
Do not accept responsibility for any damage resulting from inappropriate use, chemical cleaning or additional impregnation.



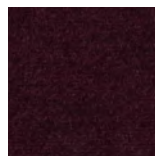
EPO01



EPO04



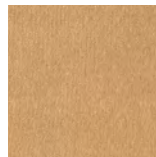
EPO05



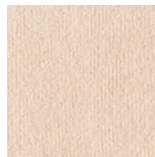
EPO07



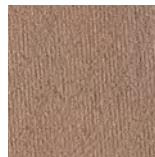
EPO08



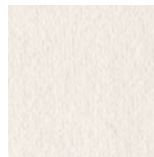
EPO09



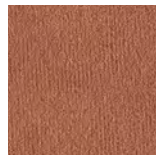
EPO10



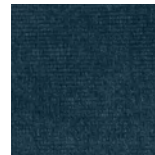
EPO11



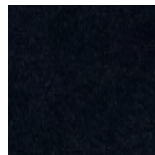
EPO12



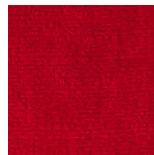
EPO13



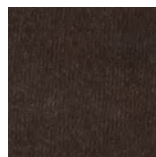
EPO14



EPO16



EPO17



EPO18



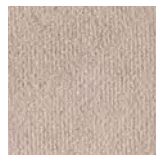
EPO19



EPO21



EPO22



EPO23



EPO24



EPO25



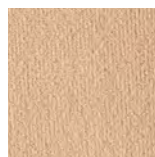
EPO26



EPO27



EPO28



EPO29



EPO31



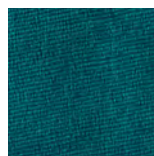
EPO32



EPO33



EPO34



EPO35



EPO36



EPO37



EPO39



EPO40



EPO41



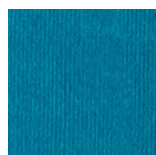
EPO45



EPO46



EPO47



EPO52



EPO53



EPO56

# Londres F.R./Gr.C by Exitfabrics

## Londres F.R. - Product information

Open-weave fabric with flat binding.  
Fire-resistant as standard (polyester F.R.), its woollen touch makes it appropriate for surfaces of all kinds, whether horizontal or vertical.

## Technical information

### Application

Contract Office Home Leisure

### Composition

100% Polyester F.R.

### Roll Width

140 cm (+/-2%)

### Roll Length

45m (+/-10%)

### Weight

402g/lm (+/-5%) / 287g/m2 (+/-5%)

### Abrasion resistance

100.000 Martindale EN ISO 12947-2

### Pilling

4 EN ISO 12945-2 (1-5)

### Colour Fastness to Light

4-5 EN ISO 105-B02 method 2 (1-8)

### Colour Fastness to Rubbing

4-5 DRY EN ISO 105-X12

4-5 WET EN ISO 105-X12

### Tear Resistance

Warp 39N EN ISO 13937-3

Weft 37N EN ISO 13937-3

### Acoustic absorption

EN ISO 10534-2: 0.9

### Flammability

BS 5852 0/1

BS 5852 CRIB 5

BS 7176 Medium Hazard

CAL TB 117 Section 1

EN 1021 1/2

FAR 25.853 a) Appendix F Part I (a) (1) (ii)

IMO MSC.307 (88) Annex I Parte 8

NF D 60-013 AM 18

NF P92-507 M1

NFPA 260 Class 1

Regulation n° 118 de UNECE Annex 6

UNE 23 727-90 1R Class M.1

UNI 9175 1. IM

### Maintenance

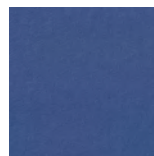
Vacuum regularly. In case of stains, use a damp cloth with neutral soap suitable for cleaning of upholstery products.



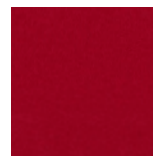
LN210



LN252



LN297



LN300



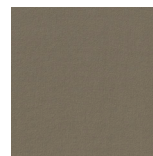
LN310



LN327



LN376



LN412



LN520



LN559



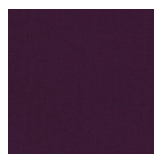
LN575



LN616



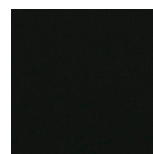
LN668



LN704



LN705



LN800

# Era/Gr.C by Camira

## Era - Product information



Era is a subtle, two tone polyester fabric containing stretch in both directions for ease of upholstery. The baby herringbone weave offers an understated contemporary texture while its colouring technique provides close up intrigue. The palette incorporates playful brights and sophisticated muted tones.

## Technical information

**Industry Application**  
Workplace, Education

**Composition**  
100% Polyester

**Environment**  
Certified to OEKO-TEX® Standard 100  
Certified to Indoor Advantage™ Gold

**Width**  
140 cm minimum

**Weight**  
320 g/m<sup>2</sup> ±5% (448 g/lin.m ±5%)

**Abrasion Resistance\***  
Heavy duty / 10 year guarantee.  
Independently certified to ≥100,000  
Martindale cycles

**Flammability**  
EN 1021 - 1 (cigarette)  
EN 1021 - 2 (match) BS 7176 Low Hazard  
EN 13501-1 Adhered Class B, s1, d0 EN  
13501-1 Un-adhered Class C, s1, d0

**Light Fastness**  
5 (ISO 105 - B02)

**Fastness to Rubbing**  
Wet: 4, Dry: 4 (ISO 105 - X12)

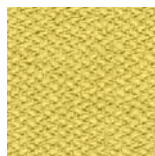
**Cleaning**  
Washable to 60°C. Vacuum regularly.  
Wipe clean with a damp cloth or  
shampoo using proprietary upholstery  
shampoo.



CSE01



CSE02



CSE03



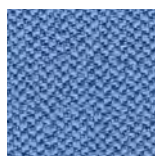
CSE05



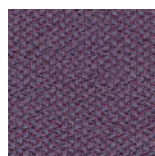
CSE06



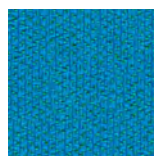
CSE07



CSE08



CSE09



CSE10



CSE11



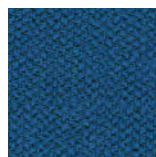
CSE12



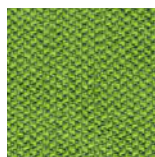
CSE13



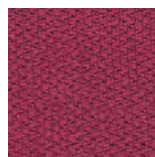
CSE14



CSE15



CSE16



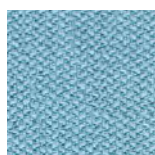
CSE17



CSE18



CSE19



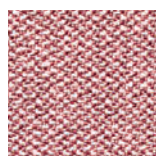
CSE20



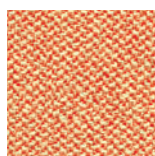
CSE21



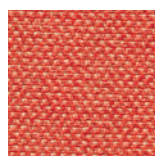
CSE23



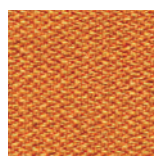
CSE24



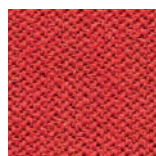
CSE25



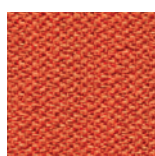
CSE26



CSE27



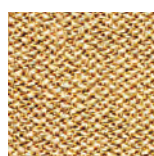
CSE28



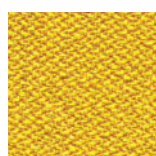
CSE29



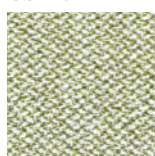
CSE30



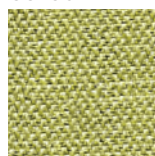
CSE31



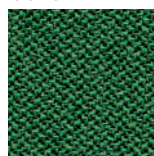
CSE32



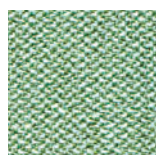
CSE33



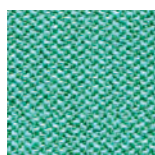
CSE34



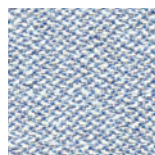
CSE35



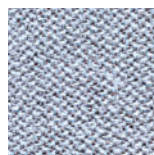
CSE36



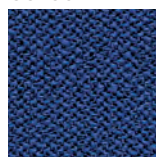
CSE37



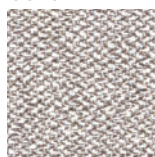
CSE38



CSE39



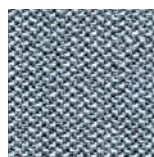
CSE40



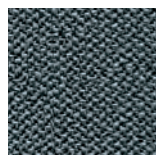
CSE41



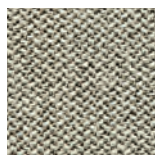
CSE42



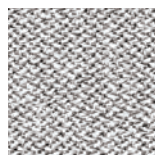
CSE43



CSE44



CSE45



CSE46

# Valencia/Gr.D by Spradling

## Valencia - Part II

### Technical information

#### Design no. 107

#### Application

Healthcare, hospitality, office, public spaces, residential.

#### Composition

Vinyl / Urethane Topcoat

#### Weight

650 gr/m<sup>2</sup>

#### Width/length

137 cm / 30 m

#### Abrasion

>300.000 cycles Martindale  
(EN ISO 12947:1999 Part 2)

#### Backing

Hi-Loft

#### Protective Finishes

PERMABLOCK

advanced vinyl protection

#### Flammability

EU: EN 1021 Part 1 & 2

ES: UNE 23.727-90 1R/M.2

FR: NF P 92-503/M2

DE: DIN 4102 B2

IT: UNI 9175 (1987) / UNI 9175/FA1 (1994)

Classe 1.IM (UNO I EMME)

AT: ÖNORM B 3825, Gruppe 1 - Schwer-

brennbares Verhalten

AT: ÖNORM A 3800 Teil 1, Qualmbil-

dungsklasse Q1 - schwachqualmend

IMO FTP 2010 Code MSC.307 (88) Part

8 3.1 & 3.2

US: FMVSS 302

US: FAR 25/853

(MED) Marine Equipment Directive (in its  
current valid version)

ECE R118.02 (replaces Directive 95/28/  
CE) Annexes 6, 7 & 8

EN 71-2:2006+A1:2007 - Safety of Toys -

Parte 2: Flammability

#### Finishes and Treatments

Antibacterial Protection

Antifungal Protection

Antimycotic Protection

PERMABLOK3®

Anti-stain Finish

Cold Crack -23°C

Mildew resistant backing and face

UV-Resistance XENOTEST DIN 54004/  
NTC 1479

EN 71-3 Safety of Toys (Migration of  
certain elements)

2005/84/EC (phthalates in toys and  
childcare articles)

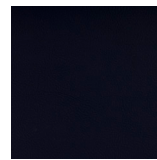
2005/84/EC (phthalates in toys and  
childcare articles)

Sulfide Stain Resistant

Anti-static Finish



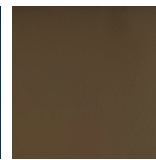
3067



3068



3069



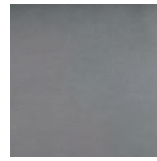
4001



4002



4003



4020



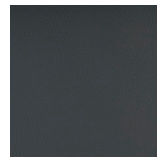
4040



4041



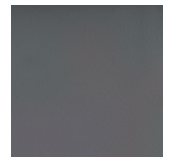
4042



4043



4044



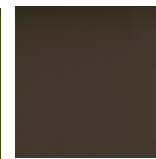
4045



4052



5001



5002



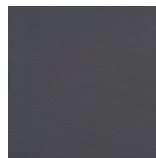
5041



5056



5057



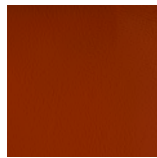
5065



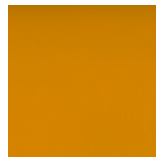
5069



6002



6003



6012



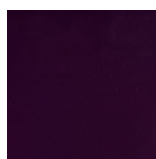
6013



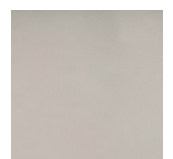
6019



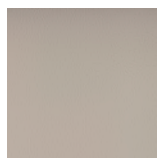
6020



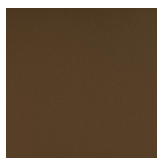
7001



8020



8032



9001



9035



9607



# Valencia/Gr.D by Spradling

## Valencia - Part I

### Technical information

#### Design no. 107

#### Application

Healthcare, hospitality, office, public spaces, residential.

#### Composition

Vinyl / Urethane Topcoat

#### Weight

650 gr/m<sup>2</sup>

#### Width/length

137 cm / 30 m

#### Abrasion

>300.000 cycles Martindale  
(EN ISO 12947:1999 Part 2)

#### Backing

Hi-Loft

#### Protective Finishes

PERMABLOCK

advanced vinyl protection

#### Flammability

EU: EN 1021 Part 1 & 2

ES: UNE 23.727-90 1R/M.2

FR: NF P 92-503/M2

DE: DIN 4102 B2

IT: UNI 9175 (1987) / UNI 9175/FA1 (1994)

Classe 1.IM (UNO I EMME)

AT: ÖNORM B 3825, Gruppe 1 - Schwerbrennbares Verhalten

AT: ÖNORM A 3800 Teil 1, Qualmbildungsklasse Q1 - schwachqualmend

IMO FTP 2010 Code MSC.307 (88) Part

8 3.1 & 3.2

US: FMVSS 302

US: FAR 25/853

(MED) Marine Equipment Directive (in its current valid version)

ECE R118.02 (replaces Directive 95/28/CE) Annexes 6, 7 & 8

EN 71-2:2006+A1:2007 - Safety of Toys -

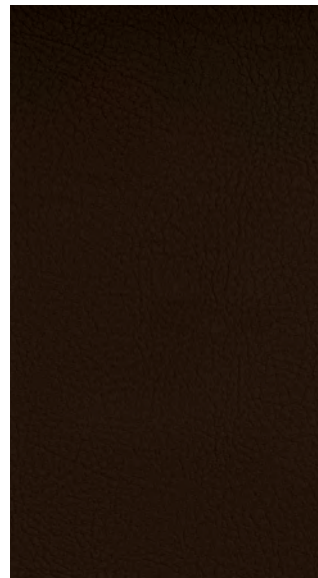
Parte 2: Flammability

EN 71-3 Safety of Toys (Migration of certain elements)

2005/84/EC (phthalates in toys and childcare articles)

Sulfide Stain Resistant

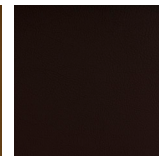
Anti-static Finish



0001



0002



0020



0033



0034



0035



1001



1020



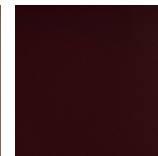
1048



1049



1050



2001



2002



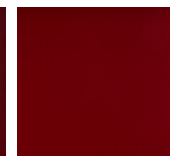
2020



2021



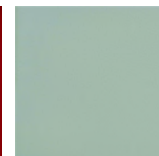
2062



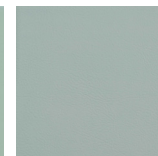
2074



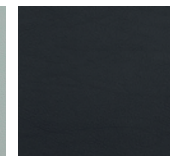
2075



2106



2107



2108



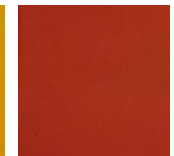
2109



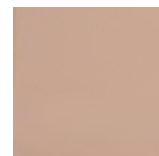
2110



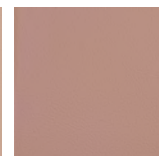
2111



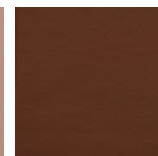
2112



2113



2114



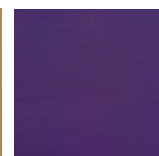
2115



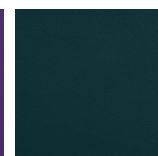
2116



2117



2118



2119



3001

# Urban/Gr.D by Camira

## Urban - Product information



Urban takes its inspiration from the street. It has a sharply styled architectural look with clean lines forming a structured geometric grid pattern reminiscent of a downtown urban cityscape. Lightly textured, there's an almost industrial metallic sheen to the freshly themed colourways which work with both Xtreme and Lucia.

## Technical information

### Industry Application

Workplace, Education, Hospitality & Leisure  
When TriOnyx™ treated: Healthcare

### Composition

100% Recycled Flame Retardant Polyester  
Non metallic dyestuffs

### Environment

Certified to the EU Ecolabel  
Certified to OEKO-TEX® Standard 100  
Made from 100% recycled polyester

### Width

140 cm minimum

### Weight

340 g/m<sup>2</sup> ±5% (476 g/lin.m ±5%)

### Abrasion Resistance\*

Heavy duty / 10 year guarantee  
Independently certified to ≥100,000  
Martindale cycles

### Flammability

EN 1021 - 1 (cigarette)  
EN 1021 - 2 (match) BS 7176 Low Hazard  
BS 5852 Ignition Source 5 BS 7176  
Medium Hazard  
DIN 4102 B1  
NF D 60-013  
ÖNORM A 3800-1  
(over CMHR 58kg/m<sup>3</sup> foam)  
UNI 9175 Classe 1 IM

### Light Fastness

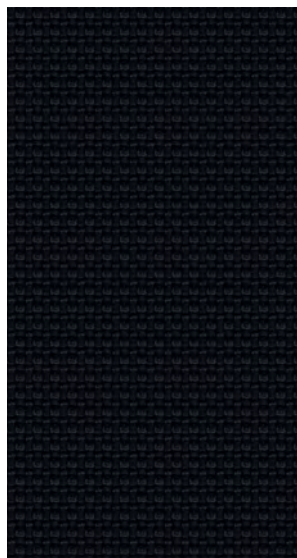
6 (ISO 105 - B02)

### Fastness to Rubbing

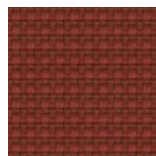
Wet: 4, Dry: 4 (ISO 105 - X12)

### Cleaning

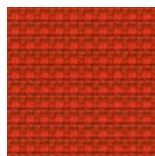
Washable to 60°C. Vacuum regularly.  
Wipe clean with a damp cloth or  
shampoo using proprietary upholstery  
shampoo.



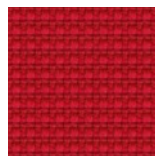
YN009



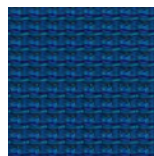
YN027



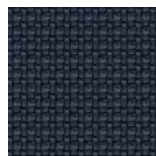
YN076



YN079



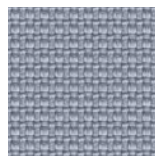
YN082



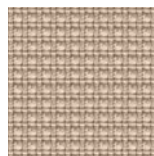
YN083



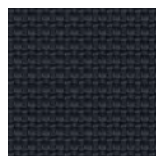
YN091



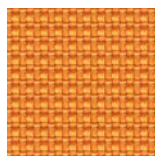
YN094



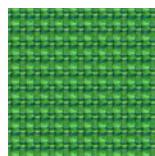
YN108



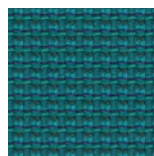
YN145



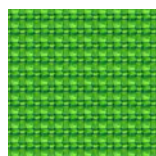
YN148



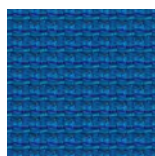
YN159



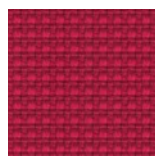
YN160



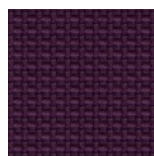
YN200



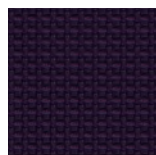
YN202



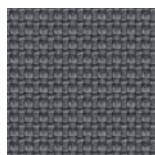
YN203



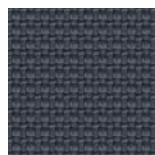
YN204



YN205



YN206



YN207



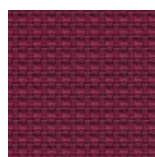
YN208



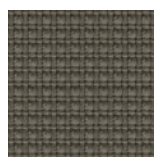
YN209



YN210



YN211



YN212

# X2/Gr.D by Camira

## X2 - Product information



X2 provides stretch, flammability and abrasion performance in an unobtrusive background grey mélange effect. The subtle dark tones create texture and dimension within a playful colour palette of brights through to subtle neutrals. The mottled appearance is also a practical solution to aid appearance retention. X2 was our first 100% recycled fabric to include closed loop content. 25% of the raw material is derived from our own waste streams, specifically polyester selvages and yarn remnants.

### Technical information

#### Industry Application

Workplace, Education, Hospitality & Leisure

#### Composition

100% Recycled FR Polyester  
Non metallic dyestuffs

#### Environment

Certified to the EU Ecolabel  
Certified to OEKO-TEX® Standard 100  
Certified to Indoor Advantage™ Gold  
Made from 100% recycled polyester

#### Width

140 cm minimum

#### Weight

310 g/m2 ±5% (434 g/lin.m ±5%)

#### Abrasion Resistance\*

Heavy duty / 10 year guarantee  
Independently certified to ≥100,000  
Martindale cycles

#### Flammability

EN 1021 - 1&2 (cigarette & match)  
BS 7176 Low Hazard  
BS 5852 Ignition Source 5  
BS 7176 Medium Hazard  
DIN 4102 B1  
NF D 60-013  
ÖNORM B 3825 & A 3800-1  
(58 kg/m3 CMHR Foam)  
UNI 9175 Classe 1 IM

#### Light Fastness

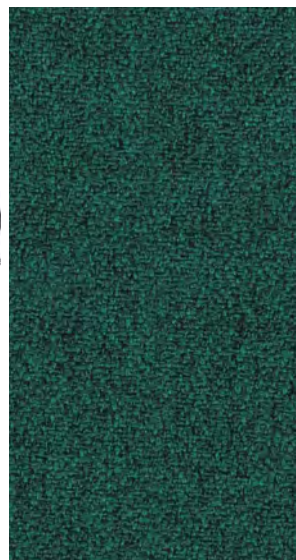
6 (ISO 105 - B02)

#### Fastness to Rubbing

Wet: 4, Dry: 4 (ISO 105 - X12)

#### Cleaning

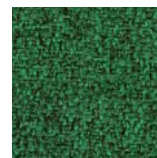
Washable to 60°C. Vacuum regularly.  
Wipe clean with a damp cloth or  
shampoo using proprietary upholstery  
shampoo.



AK001



AK002



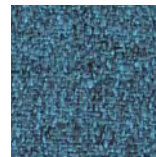
AK003



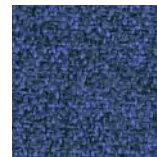
AK004



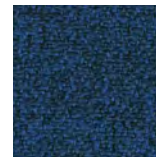
AK005



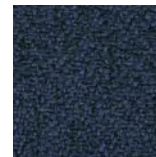
AK006



AK007



AK008



AK009



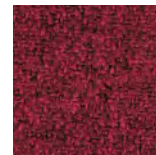
AK010



AK011



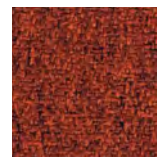
AK012



AK013



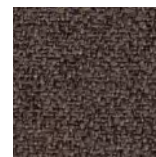
AK014



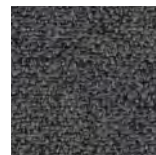
AK015



AK016



AK017



AK018



AK019



AK020

# Medley/Gr.D by Gabriel

## Medley - Product information

Medley is woven in 100% polyester melange yarn with a simple, geometric structure. The tight texture and changing structure of the yarn give the fabric an intense colour depth and a lively surface in multiple shades.

## Technical information

### Design no. 8613

### Application

contract - soft seating

### Composition

100% polyester

### Weight

510 g/lm (16.5 oz/lin.yd)

### Width

140 cm / 55 inches

### Abrasion

75,000 rubs martindale (EN ISO 12947-2)

100,000 double rubs wyzenbeek (ASTM D4157-07) (heavy duty upholstery)

### Pilling

4 scale 1-5, max. 5 - EN ISO 12945-2

### Light fastness

5-7 scale 1-8, max. 8 - EN ISO 105-B02

### Rubbing fastness

4-5/4-5 (wet/dry)

scale 1-5, max. 5 - EN ISO 105x12

### Maintenance

wash or dry cleaning P(W)

Medley is made of polyester which is a material suited for environments with special requirements for cleaning.

60°C shrinkage max. 1%.

74°C shrinkage max. 3%.

### US ACT

AATCC 16 Light fastness

AATCC 8 or 116 Wet/dry crocking

ASTM D3511 Pilling

ASTM D4157-07 Wyz abrasion (heavy-duty)

CA TB 117-2013

ASTM E 84 Class I

### Acoustic test air flow resistance

EN 29053 & ISO 9053-1

### Acoustic test sound absorption

ISO 354 & ISO 11654

### Flammability

BS EN 1021 1&2 Cigarette and Match

BS EN 1021-1 Cigarette

BS 5852 Part 1 0,1 Cigarette & match

BS 476 Part 7, class 2

Class Uno UNI 9174 - UNI 8457

ÖNORM A3800-B2-B3825-Q1 UK

CA TB 117-2013

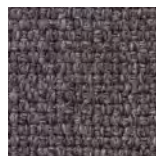
ASTM E 84 Class I

### Environment

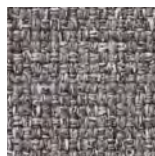
STANDARD 100 by OEKO-TEX®



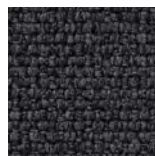
60003



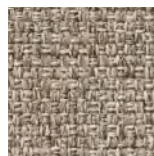
60004



60167



60999



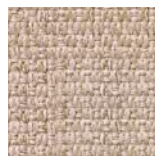
61002



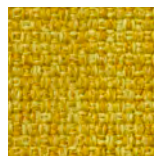
61003



61004



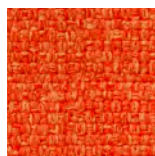
61189



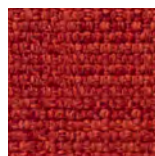
62002



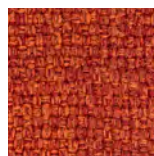
62054



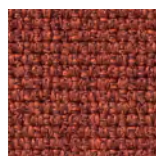
63013



63016



63017



63063



63064



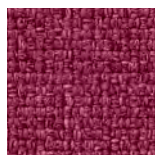
64019



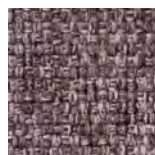
64123



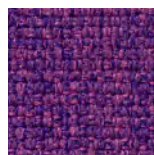
64124



64125



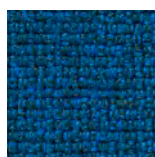
65011



65012



65086



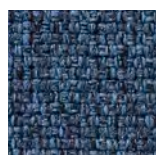
66007



66008



66009



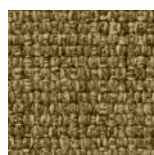
66010



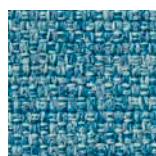
66144



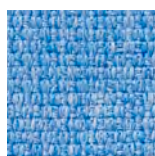
66145



67002



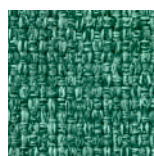
67006



67052



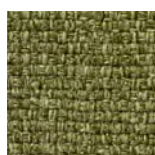
67053



67054



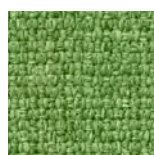
68002



68005



68114



68115

# Felicity/Gr.D by Gabriel

## Felicity - Product information

Felicity is a unicoloured, multifunctional fabric made from 100% recycled, post-consumer polyester. It offers great utility value and is suitable for a wide range of applications, furniture and interiors.

## Technical information

**Design no. 13-2477**

**Application**  
contract

### Composition

100% post-consumer recycled polyester

### Weight

430 g/lm (13.87 oz/lin.yd)

### Width

140 cm / 55 inches

### Abrasion

90,000 rubs martindale (EN ISO 12947-2)

100,000 double rubs wyzenbeek (ASTM D4157-07) (heavy duty upholstery)

### Pilling

5 scale 1-5, max. 5 - EN ISO 12945-2

### Light fastness

5-7 scale 1-8, max. 8 - EN ISO 105-B02

### Rubbing fastness

4-5/4-5 (wet/dry)

scale 1-5, max. 5 - EN ISO 105x12

### Maintenance

wash or dry cleaning P(W)

Felicity is made of polyester which is a material suited for environments with special requirements for cleaning.

40°C shrinkage max. 1,5%.

60°C shrinkage max. 2,5%.

### US ACT

ASTM D4157-07 Wyz abrasion (heavy duty) 100k

ASTM D3511 Pilling

AATCC 16 Light fastness

AATCC 8 or 116 Wet/dry crocking

CA TB 117-2013

### Acoustic test air flow resistance

EN 29053 & ISO 9053-1

### Flammability

BS EN 1021 1&2 Cigarette and Match

### Environment

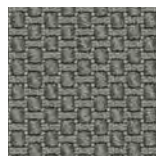
STANDARD 100 by OEKO-TEX®

EU Ecolabel

Cradle to Cradle Certified™ Bronze



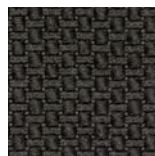
60105



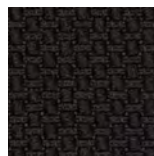
60106



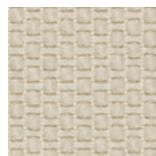
60107



60108



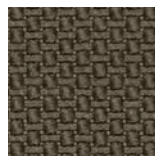
60999



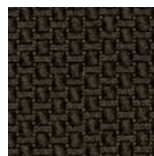
61163



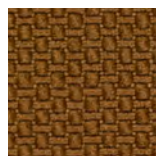
61164



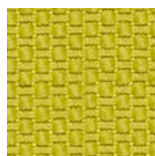
61165



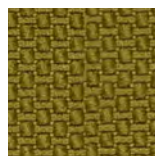
61166



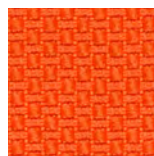
61167



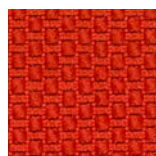
62080



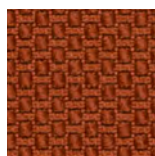
62081



63087



63088



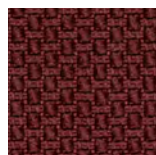
63089



64189



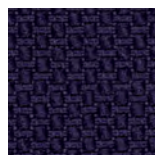
64190



64191



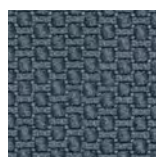
65102



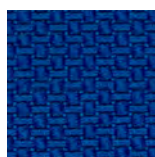
65103



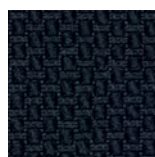
66161



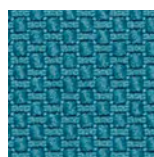
66162



66163



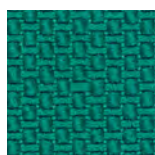
66164



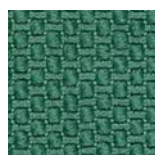
67079



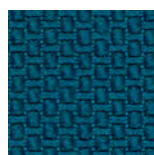
67080



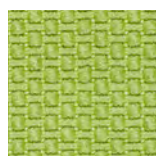
67081



67082



67083



68178



68179

# Main Line F./Gr.E by Camira

## Main Line Flax - Product information



Main Line Flax is the natural progression of our all-time favourite Main Line Plus fabric, building on our industry-leading bast fibre expertise to create a new inherently flame retardant fabric from sustainable sources. A symbol of purity, wild flax has been used in textiles for thousands of years thanks to its strong, long and smooth fibres found inside the stem of the plant. The fibre is spun into a 70-30 wool flax blend, then fibre-dyed to create beautiful mixture yarns which are woven into interesting solids and cross-colours inspired by the rich tones of rare jewels.

### Technical information

#### Industry Application

Workplace, Education, Hospitality & Leisure

#### Composition

70% Virgin Wool, 30% Flax

#### Environment

Certified to the EU Ecolabel Certified to Indoor Advantage™ Gold  
Rapidly renewable and compostable  
Made from wool and bast fibre

#### Width

140 cm minimum

#### Weight

437 g/m<sup>2</sup> ±5% (612 g/lin.m ±5%)

#### Abrasion Resistance\*

Heavy duty / 10 year guarantee  
Independently certified to ≥ 50,000  
Martindale cycles

#### Flammability

EN 1021 - 1 (cigarette)  
EN 1021 - 2 (match) BS 7176 Low Hazard  
BS 5852 Ignition Source 5 BS 7176 Medium Hazard NF D 60-013  
ÖNORM B 3825 & A 3800-1 (58kg/m<sup>3</sup> CMHR Foam)  
UNI 9175 Classe 1 IM

#### Light Fastness

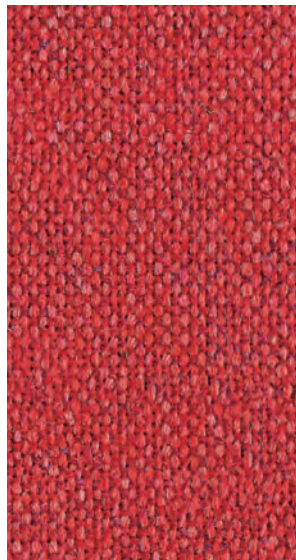
5 (ISO 105 - B02)

#### Fastness to Rubbing

Wet: 3, Dry: 4 (ISO 105 - X12)

#### Cleaning

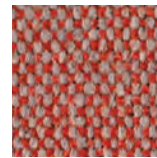
Vacuum regularly.  
Professionally dry clean or wipe clean with a damp cloth



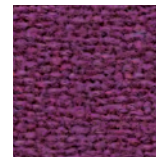
MLF01



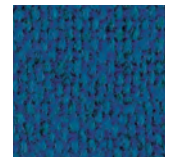
MLF02



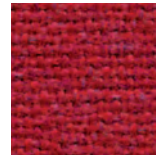
MLF03



MLF04



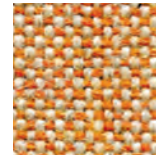
MLF05



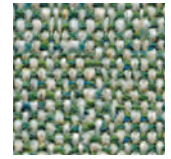
MLF06



MLF07



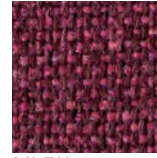
MLF08



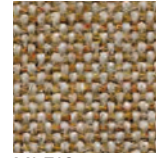
MLF09



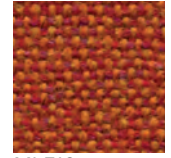
MLF10



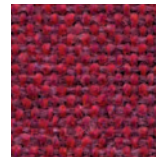
MLF11



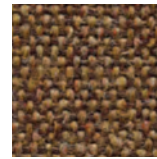
MLF12



MLF13



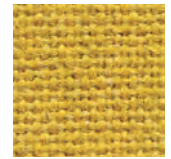
MLF14



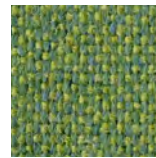
MLF15



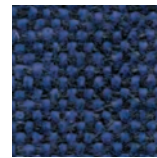
MLF16



MLF017



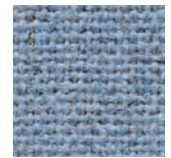
MLF18



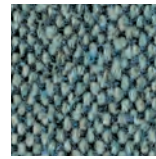
MLF19



MLF20



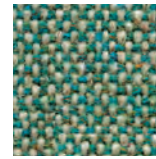
MLF21



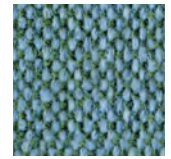
MLF22



MLF23



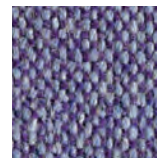
MLF24



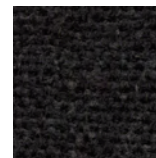
MLF25



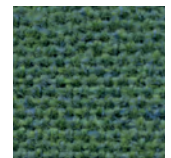
MLF26



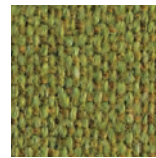
MLF27



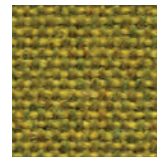
MLF28



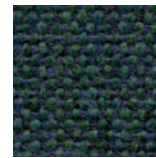
MLF29



MLF30



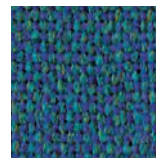
MLF31



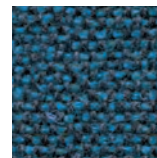
MLF32



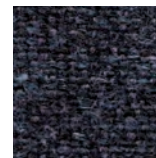
MLF33



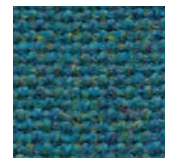
MLF34



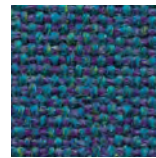
MLF35



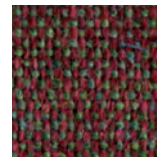
MLF36



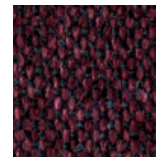
MLF37



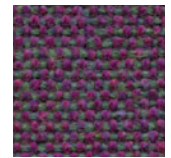
MLF38



MLF39



MLF40



MLF41

# Silvertex/Gr.E by Spradling

## Silvertex

### Technical information

**Design no. 122**

#### Application

Healthcare, hospitality, office, outdoor,  
public spaces, residential.

#### Composition

Vinyl / Urethane Topcoat

#### Weight

685 gr/m<sup>2</sup>

#### Width/length

137 cm / 30 m

#### Abrasion

>300.000 cycles Martindale  
(EN ISO 12947:1999 Part 2)

#### Backing

Hi-Loft

#### Protective Finishes

PERMABLOCK  
advanced vinyl protection

#### Flammability

EU: EN 1021 Part 1 & 2

ES: UNE 23.727-90 1R/M.2

FR: NF P 92-503/M2

DE: DIN 4102 B2

IT: UNI 9175 (1987) / UNI 9175/FA1 (1994)

Classe 1.IM (UNO I EMME)

AT: ÖNORM B 3825, Gruppe 1 - Schwer-

brennbares Verhalten

AT: ÖNORM A 3800 Teil 1, Qualmbil-

dungsklasse Q1 - schwachqualmend

IMO FTP 2010 Code MSC.307 (88) Part

8 3.1 & 3.2

US: FMVSS 302

US: FAR 25/853

(MED) Marine Equipment Directive (in its  
current valid version)

ECE R118.02 (replaces Directive 95/28/  
CE) Annexes 6, 7 & 8

EN 71-2:2006+A1:2007 - Safety of Toys -

Parte 2: Flammability

#### Finishes and Treatments

Antibacterial Protection

Antifungal Protection

Antimycotic Protection

UV-resistance: 1000 hours, blue wool

scale

PERMABLOK3®

Anti-stain Finish

Cold Crack -23°C

Mildew resistant backing and face

UV-Resistance XENOTEST DIN 54004/  
NTC 1479

EN 71-3 Safety of Toys (Migration of  
certain elements)

Sulfide Stain Resistant

Anti-static Finish



# Atlantic/Gr.E by Gabriel

## Atlantic - Product information

Atlantic is designed with a straight-forward, light structure and a discreet relief effect, which adds play and depth to both surface and colour. It is a strong base fabric with visual values ranging from quiet to fresh and sporty looks.

## Technical information

**Design no. 8690**

**Application**  
contract

**Composition**  
100% polyester

**Weight**  
530 g/lm (17.09 oz/lin.yd)  
**Width**  
150 cm / 59 inches

**Abrasion**  
100,000 rubs martindale (EN ISO 12947-2)  
100,000 double rubs wyzenbeek (ASTM D4157-07) (heavy duty upholstery)

**Pilling**  
4-5 scale 1-5, max. 5 - EN ISO 12945-2  
**Light fastness**  
5-7 scale 1-8, max. 8 - EN ISO 105-B02  
**Rubbing fastness**  
4-5/4-5 (wet/dry)  
scale 1-5, max. 5 - EN ISO 105x12

**Maintenance**  
wash or dry cleaning P(W)  
Atlantic is made of polyester which is a material suited for environments with special requirements for cleaning.  
60°C shrinkage max 3%.

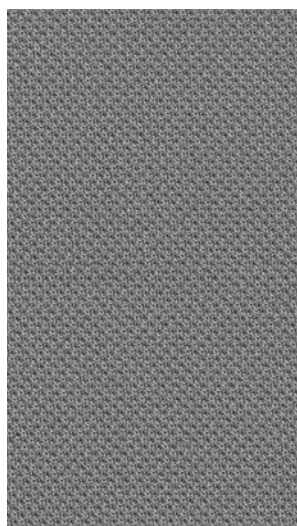
**US ACT**  
AATCC 16 Light fastness  
ASTM D3511 Pilling  
ASTM D4157-07 Wyz abrasion (heavy duty)  
CA TB 117-2013  
ASTM E 84 Class I  
AATCC 8 or 116 Wet/dry crocking

**Acoustic test air flow resistance**  
EN 29053 & ISO 9053-1

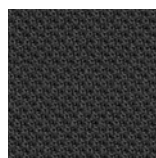
**Flammability**  
CA TB 117-2013  
ASTM E 84 Class I  
ÖNORM A3800-B1-B3825-Q1 UK  
BS EN 1021-1 Cigarette  
BS EN 1021-2 Match

**Flammability with flameretardant treatment Certificates**  
FAR/JAR 25.853 (a) (i) (ii) (flame retardant)

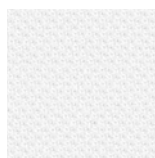
**Environment**  
STANDARD 100 by OEKO-TEX®  
EU Ecolabel



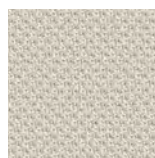
60011



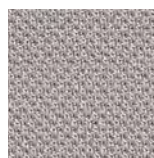
60025



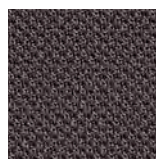
60061



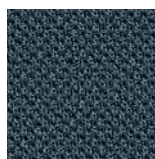
60063



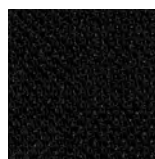
60141



60142



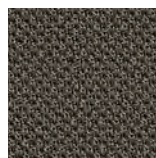
60143



60999



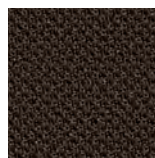
61078



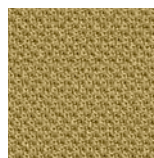
61163



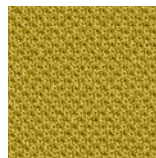
61164



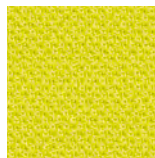
61165



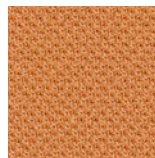
61166



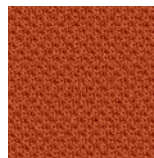
62048



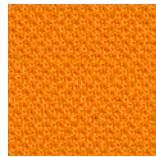
62049



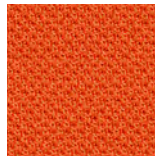
63033



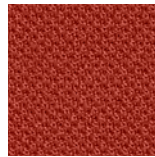
63034



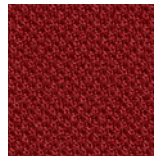
63055



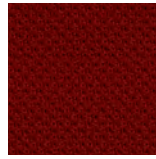
63056



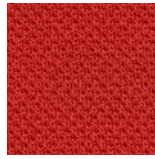
63057



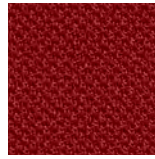
64089



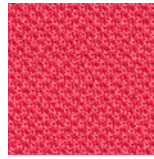
64092



64093



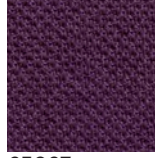
64105



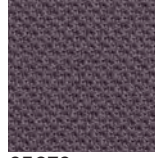
64116



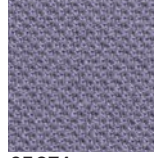
64117



65037



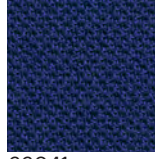
65073



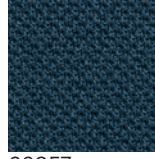
65074



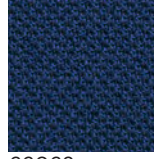
65075



66041



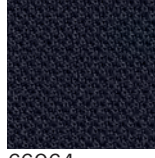
66057



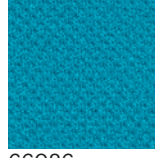
66062



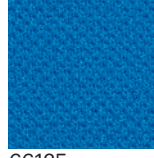
66063



66064



66086



66125



66126



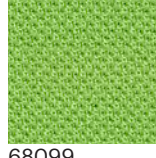
67030



67043



68054



68099



# Chili/Gr.E by Gabriel

## Chili - Product information

Chili is made from post- consumer recycled flame retardant polyester. The fabric offers superior flame retardancy and is designed for use in environments, where fire safety is an absolute top priority.

## Technical information

**Design no. 2488**

**Application**  
contract

### Composition

75% post-consumer recycled polyester fr / 25% polyester fr (fr inside the fiber)

### Weight

470 g/lm (15.16 oz/lin.yd)

### Width

140 cm / 55 inches

### Abrasion

60,000 rubs martindale (EN ISO 12947-2)

100,000 double rubs wyzenbeek (ASTM D4157-07) (heavy duty upholstery)

### Pilling

4-5 scale 1-5, max. 5 - EN ISO 12945-2

### Light fastness

5-8 scale 1-8, max. 8 - EN ISO 105-B02

### Rubbing fastness

4-5/4-5 (wet/dry)

scale 1-5, max. 5 - EN ISO 105x12

### Maintenance

wash or dry cleaning P(W)

Chili is made of polyester which is a material suited for environments with special requirements for cleaning. click here for guidance relating to disinfection.

60°C shrinkage max. 3%.

### US ACT

AATCC 16 Light fastness

AATCC 8 or 116 Wet/dry crocking

ASTM D4157-07 Wyz abrasion (heavy-duty)

CA TB 117-2013

ASTM E 84 Class I

### Acoustic test air flow resistance

EN 29053 & ISO 9053-1

### Flammability

CA TB 117-2013

NFP 92-503/504/505 M1

DIN 4102 - B1

Class Uno UNI 9175 Class I | EMME

BS EN 1021 1&2 Cigarette and Match

BS EN 1021-1 Cigarette

BS 7176 Medium hazard

BS 5852 Crib 5

BS 5852 Part 1 0,1 Cigarette & match

AM 18 - NF D 60-013-(only for fabric)

DIN EN 13501-1 B-s1,d0

### Environment

STANDARD 100 by OEKO-TEX®



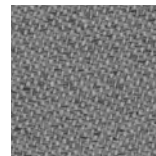
60081



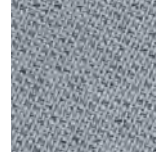
62086



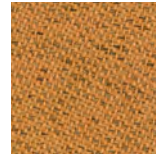
64197



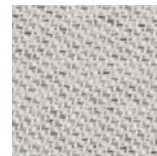
60083



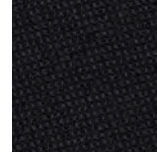
60117



61173



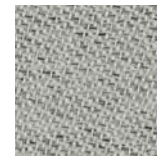
60114



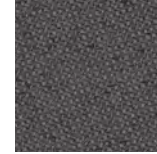
60999



61174



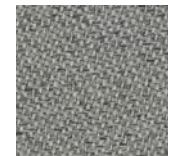
60115



61171



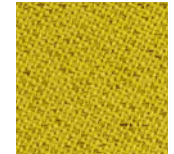
61175



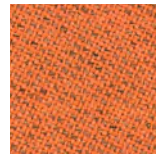
60116



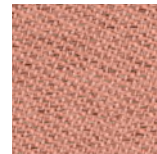
61172



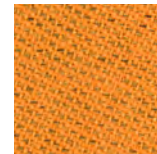
62085



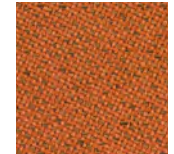
63090



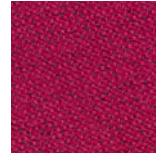
63092



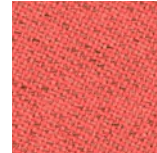
63093



63099



64198



64199



64200



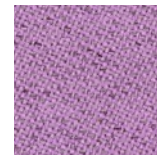
64201



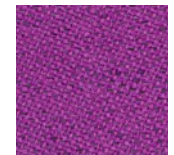
64202



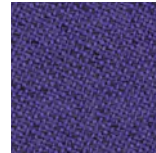
64203



65107



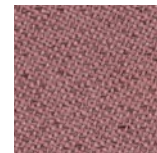
65108



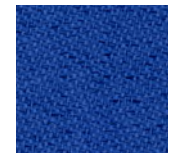
65109



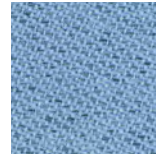
65110



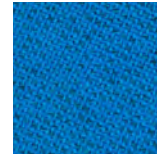
65111



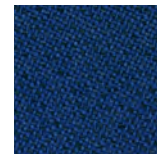
66171



66172



66173



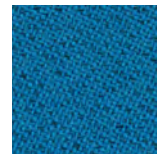
66174



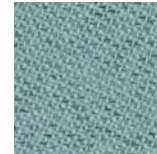
66175



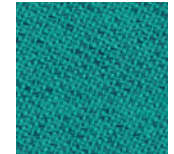
66176



67085



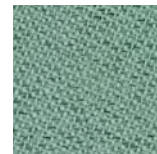
68189



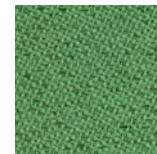
68190



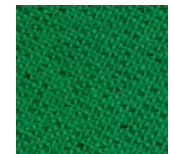
68191



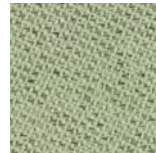
68192



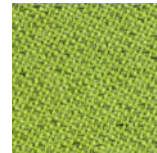
68193



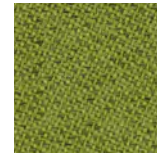
68194



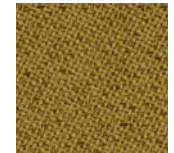
68195



68196



68197



68198

# Revive/Gr.F by Kvadrat

## Revive - Product information

Revive 1+2 are vibrant upholstery textiles designed by Georgina Wright. Both are made from post-consumer recycled polyester (PET) and are especially created with a focus to reduce the environmental impact both in production and natural resources.

The designs of Revive 1+2 are inspired by the textures, colours and materials of harbours and fishing boats. They each comprise two unicolours, one in the warp and one in the weft. These are either tone-in-tone or slightly contrasting. This ensures the designs complement each other well.

## Technical information

### Revive 1 - 0144

#### Application

Offices, hotels, institutions, domestic use. Great durability.

#### Composition

100% Recycled polyester FR

#### Weight

420 g/lin.m

#### Width

140 cm / 55 inches

#### Abrasion

60,000 rubs martindale (EN ISO 12947)

#### Pilling

4-5 scale 1-5, max. 5 - EN ISO 12945

#### Light fastness

5 scale 1-8, max. 8 - EN ISO 105-B02

#### Rubbing fastness

4-5/5 (wet/dry)

scale 1-5, max. 5 - EN ISO 105x12

#### Care

Please, see the ISO symbols.

60°C shrinkage max. 1%.

#### Flammability

DIN 4102 B1

EN 1021-1/2

IMO FTP Code 2010 Part 8

UNI 9175 1IM

US Cal. Bull. 117-2013

ÖNORM B1/ Q1

NF D 60 013 with treatment

SN 198 898 5.3 with treatment

AS/NZS 3837, class 1

BS 5852 ignition source 3

BS 5852 Crib 5 with treatment

BS 5852 part 1 with treatment

GB 50222 B1 with treatment

UNI 9177 Classe 1

#### Environment

Environmental Product Declaration,

EN15804

Reduced emissions Greenguard and

Greenguard Gold certified



# Cura/Gr.F by Gabriel

## Cura - Product information

Cura is a multi-purpose, two-coloured upholstery fabric made from 98% post-consumer recycled polyester. Use Cura for office furniture or lounge seating to transform workplaces into homey interiors.

## Technical information

**Design no. 2480**

### Application

contract - soft seating

### Composition

98% post-consumer recycled polyester  
/ 2% polyester

### Weight

420 g/lm (13,55 oz/lin.yd)

### Width

140 cm / 55 inches

### Abrasion

100,000 rubs martindale (EN ISO 12947-2)

100,000 double rubs wyzenbeek (ASTM D4157-07) (heavy duty upholstery)

### Pilling

4-5 scale 1-5, max. 5 - EN ISO 12945-2

### Light fastness

5-8 scale 1-8, max. 8 - EN ISO 105-B02

### Rubbing fastness

4-5/4-5 (wet/dry)

scale 1-5, max. 5 - EN ISO 105x12

### Maintenance

wash or dry cleaning P(W)

Cura is made of polyester which is a material suited for environments with special requirements for cleaning.

40°C shrinkage max. 1%.

60°C shrinkage max. 2%.

### US ACT

ASTM D4157-07 Wyz abrasion (heavy-duty)

ASTM D3511 Pilling

CA TB 117-2013

AATCC 16 Light fastness

AATCC 8 or 116 Wet/dry crocking

### Acoustic test air flow resistance

EN 29053 & ISO 9053-1

### Flammability

BS EN 1021 1&2 Cigarette and Match

BS 5852 Part 1 0,1 Cigarette & match

CA TB 117-2013

### Environment

STANDARD 100 by OEKO-TEX®

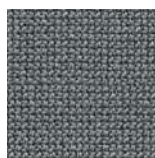
EU Ecolabel



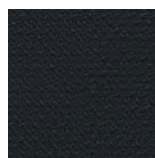
60009



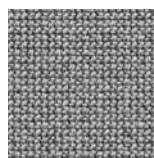
60109



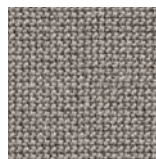
60110



60111



60112



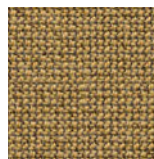
61168



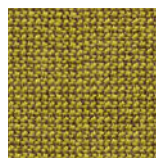
61169



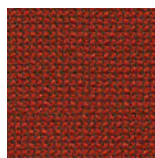
62082



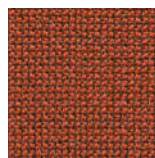
62083



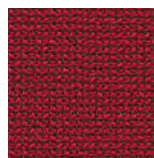
62084



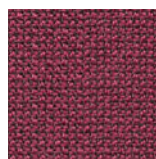
63012



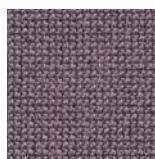
63078



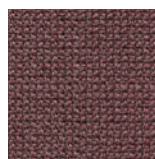
64013



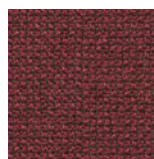
64193



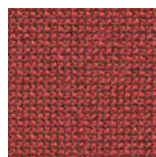
64194



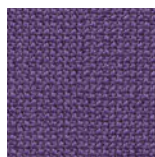
64195



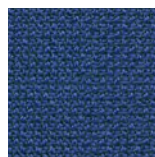
64196



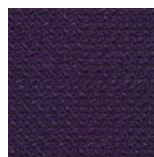
64197



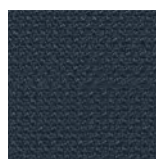
65104



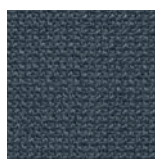
65105



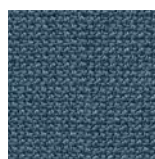
65106



66165



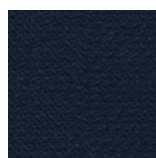
66166



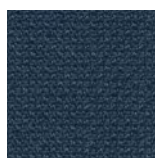
66167



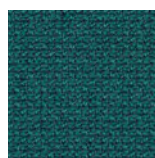
66168



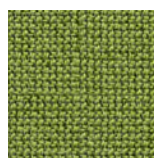
66169



66170



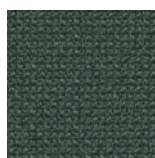
67084



68180



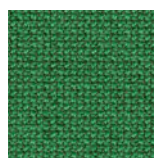
68181



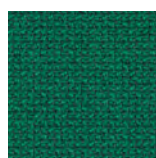
68182



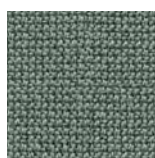
68183



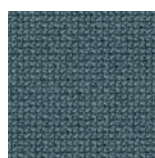
68184



68185



68186



68187

# Step M./Gr.F by Gabriel

## Step M. - Product information

There's something quite sensuous about Step Melange which, with its two nuances, makes the eyes explore and the hands wander over the voluminous fabric.

## Technical information

**Design no.** 2441/2442

**Application** contract

**Composition**

100% Trevira cs

**Weight**

470 g/lm (15.16 oz/lin.yd)

**Width**

140 cm / 55 inches

### Abrasion

100,000 rubs martindale (EN ISO 12947-2)

100,000 double rubs wyzenbeek (ASTM D4157-07) (heavy duty upholstery)

### Pilling

4-5 scale 1-5, max. 5 - EN ISO 12945-2

### Light fastness

5-7 scale 1-8, max. 8 - EN ISO 105-B02

### Rubbing fastness

4-5/4-5 (wet/dry)

scale 1-5, max. 5 - EN ISO 105x12

### Maintenance

wash or dry cleaning P(W)

Step Melange is made of Trevira CS which is a polyester material suited for environments with special requirements for cleaning.

can be wiped with Virkon S, Actichlor Plus, Prime Source ren-93 or Ethanol (70-85%).

60°C shrinkage max. 3%.

74° shrinkage max. 5%.

### US ACT

AATCC 16 Light fastness

AATCC 8 or 116 Wet/dry crocking

ASTM D3511 Pilling

ASTM D4157-07 Wyz abrasion (heavy-duty)

CA TB 117-2013

ASTM E 84 Class I

### Flammability

IMO MSC 307(88) Annex 1 part 8

MED Certificate IMO - DIN 4102 - B1

NFP 92-503/504/505 M1

BS EN 1021 1&2 Cigarette and Match

BS EN 1021-1 Cigarette

BS 5852 Part 1 0,1 Cigarette & match

BS 5852 Crib 5

ÖNORM A3800-B2-B3825-Q1 UK

FAR/JAR 25.853 (a) (i) (ii)

BS 7176 Medium hazard

AM 18 - NF D 60-013-(only for fabric)

CA TB 117-2013

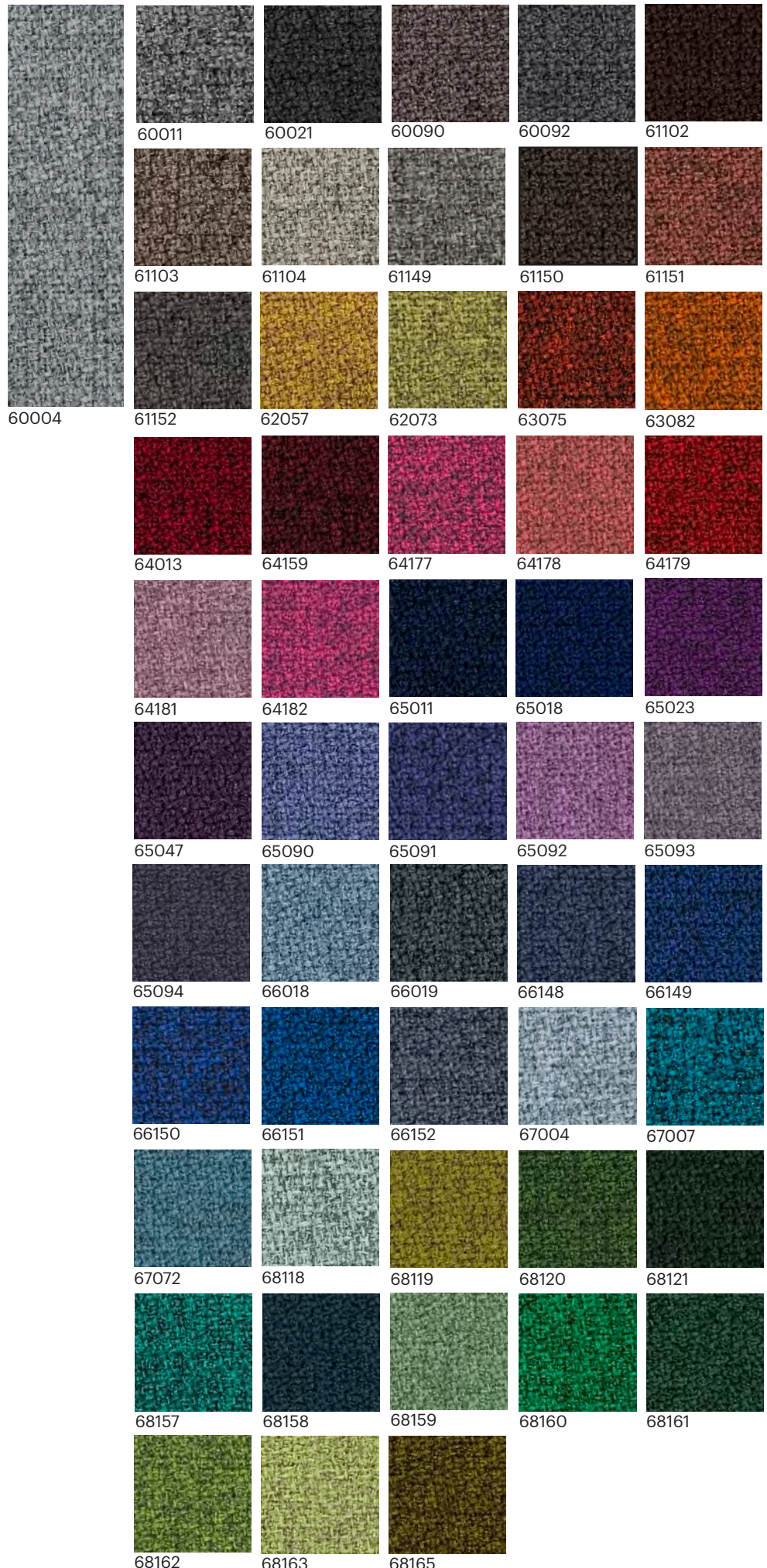
Class Uno UNI 9175 Class I EMME

DIN EN 13501-1 B-s1,d0

### Environment

STANDARD 100 by OEKO-TEX®

EU Ecolabel



# Fame/Gr.G by Gabriel

## Fame - Product information

Fame is a unique woollen upholstery fabric with a wearability of 200,000 Martindale, and at the same time is extra soft and stretchable. The colour scale is very elegant and vibrant.

## Technical information

### Design no. 2409

Application contract

### Composition

95% New Zealand wool / 5% polyamide

### Weight

630 g/lm (20.32 oz/lin.yd)

### Width

140 cm / 55 inches

### Abrasion

200,000 rubs martindale (EN ISO 12947-2)

140,000 double rubs wyzenbeek (ASTM D4157-07) (heavy duty upholstery)

### Pilling

4 scale 1-5, max. 5 - EN ISO 12945-2

### Light fastness

5-7 scale 1-8, max. 8 - EN ISO 105-B02

### Rubbing fastness

4-5/4-5 (wet/dry)

scale 1-5, max. 5 - EN ISO 105x12

### Maintenance

dry cleaning P(S)

### US ACT

AATCC 16 Light fastness

AATCC 8 or 116 Wet/dry crocking

ASTM D3511 Pilling

ASTM D4157-07 Wyz abrasion (heavy-duty)

CA TB 117-2013

ASTM E 84 Class I

### Acoustic test air flow resistance

EN 29053 & ISO 9053-1

### Acoustic test sound absorption

ISO 354 & ISO 11654

### Flammability

BS EN 1021-1 Cigarette

BS EN 1021-2 Match

BS 5852 Crib 5

CA TB 117-2013

Class Uno UNI 9175 Class 1 I EMME

AM 18 - NF D 60-013-(only for fabric)

BS 5852 Part 1 0,1 Cigarette & match

ÖNORM A3800-B1-B3825-Q1 UK

IMO MSC 307(88) Annex 1 part 8

MED Certificate IMO

BS 476 Part 7, class 1

### Flammability with flameretardant treatment

DIN 4102 - B1

NF P 92-503 M2

BS 7176 Medium hazard

### Environment

STANDARD 100 by OEKO-TEX®

EU Ecolabel



# CUIR - Genua/LG by Leder-Reinhardt

## Technical information

### Genua - Product information

Wear resistant cattle hide leather with light grain design for best cutting results.

#### Application

Furniture, leathersgoods, contract business

#### Composition

Wear resistant cattle hide leather

#### RAWHIDES

South American cattle hides

4,0 – 4,5 m<sup>2</sup>

**THICKNESS** 0,9 – 1,1 mm

**SURFACE** Pigmented

#### TANNING

Ecologically safe mineral tannage

**Shipment** ex stock

**Minimum** hide

#### Fatting

High-value fat stuffs for a comfortably soft feel

#### Dyeing

Dyed-through in the drum, with high-class dye stuffs

#### PCP

According to the PCP-regulation dated 12/12/1989

#### Environment, AZO colours

The leathers are being produced ecologically safe, according to laws and regulations, without AZO colours

#### Inflammability

According to DIN EN 1021-1 EUFAC (upholstery furniture union)

**Light constancy** ≥ 5 (EN ISO 105 – B02)

#### Rubbing fastness

≥ 4 trocken / dry: 500 EN ISO 11640

≥ 3 – 4 nass / wet: 80 EN ISO 11640 ≥ 3 –

4 alkalisch / alcalic: 50 EN ISO 11640

#### Crack resistance

30 000 – keine Veränderungen / no damage EN ISO 5402

#### Care

The leathers can be cleaned with a moistened cloth and neutral soap. For the care we recommend the leather care products LR-Edition. You will find further information in the care instructions. Please ask for your personal copy upon request

