

COLORIS

résilles - tissus

ePOXIA
aménagement et mobilier de bureau

01 39 66 00 77

RR

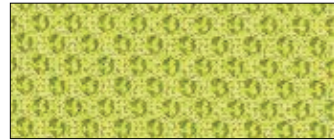


MESH RUNNER

Composizione - Composition
100% Polyester
Peso (g/ml) - Weight (g/lm) 510
Resistenza all'abrasione (cicli)

Abrasion résistance (rubs)
EN ISO 12947 :2000
70.000 cycles Martindale
Reazione al fuoco - Flammability

Solidità colori alla luce
Colour fastness to light (Xenotest)
Blue scale UNI EN 105-B02 5/7



RR08



RR56



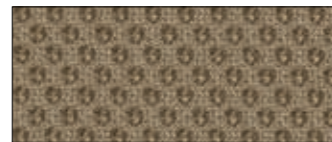
RR63



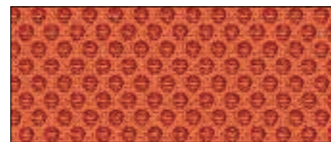
RR23



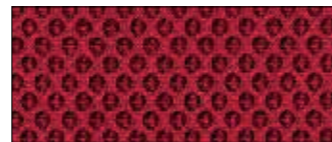
RR61



RR10



RR34



RR89



RR11



RR99

RA



MESH ARIA

Composizione - Composition
100% Polyester
Peso (g/ml) - Weight (g/lm) 375
Resistenza all'abrasione (cicli)

Abrasion résistance (rubs)
EN ISO 12947 : 2000
100.000 cycles Martindale
Colour fastness to light (Xenotest)

Blue scale UNI EN 105-B02 5
Reazione al fuoco - Flammability
BS 7176 Low Hazard using a CM Foam 35
Kg/cu.m.



RA01



RA02



RA03

RB



MESH RB

Composizione - Composition
75% Polyester / 25 % Polyamid
Peso (g/ml) - Weight (g/lm) 420
Resistenza all'abrasione (cicli)

Abrasion résistance (rubs)
EN ISO 12947-2 :2007
40.000 cycles Martindale
Solidità alla luce - Fastness to light

DIN EN ISO 105-802:2002
UNI EN 105-B02 5-7
Reazione al fuoco - Flammability
D- DIN EN 1021:1994-01 part 1



RB01

RM

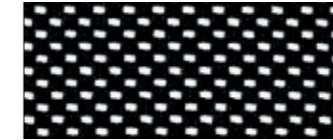


MESH MICRON

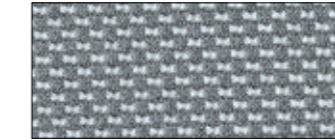
Composizione - Composition
100% Polyester
Peso (g/ml) - Weight (g/lm) 350
Resistenza all'abrasione (cicli)

Abrasion résistance (rubs)
EN ISO 12947 : 2000
100.000 cycles Martindale

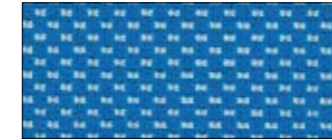
Solidità colori alla luce
Colour fastness to light (Xenotest)
Blue scale UNI EN 105-B02 5



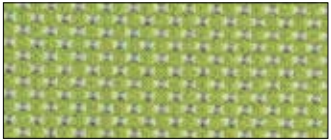
RM01



RM26



RM29



RM22



RM99

RL



MESH LINEA

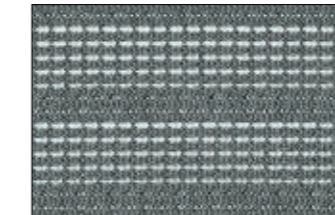
Composizione - Composition
100% Poliestere - Polyester
Peso (g/ml) - Weight (g/lm) 350
Resistenza all'abrasione (cicli)

Abrasion résistance (rubs)
EN ISO 12947 : 2000
100.000 cycles Martindale

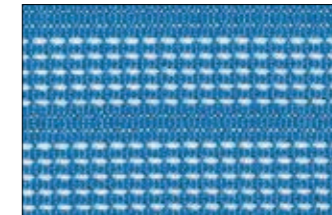
Solidità colori alla luce
Colour fastness to light (Xenotest)
Blue scale UNI EN 105-B02 5



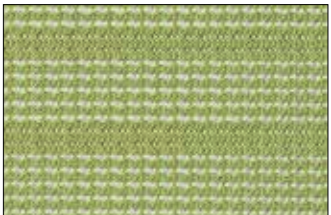
RL01



RL26



RL25



RL22

RH



RHYTHM

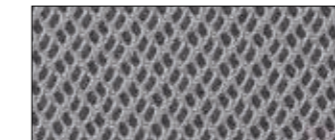
Composizione - Composition
100% Poliestere - Polyester
Peso (g/ml) - Weight (g/lm) 525
Resistenza all'abrasione (cicli)
Abrasion résistance (rubs)
EN ISO 12947 : 2000

70.000 cycles Martindale
Solidità colori alla luce
Colour fastness to light (Xenotest)
Blue scale UNI EN 105-B02 5-7
BS EN 1021-1 Cigarette - BS EN 1021-2 Match
BS 5852 Part 1 0,1 Cigarette & match

BS 5852 Crib 5 - BS 7176 Medium hazard
DIN 4102 B1
NF P 92-503 M3 - CAT B 117-2013
Class Uno UNI 8456 UNI 9174



RH00



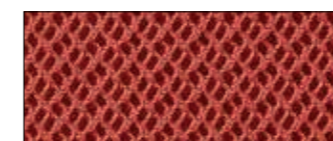
RH65



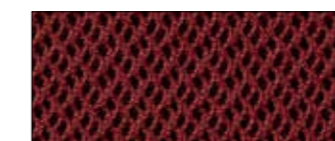
RH52



RH23



RH67



RH68



RH25



RH99

YS

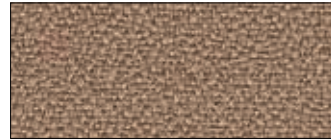


XTREME

Composizione - Composition
100% Polyester FR - Trevira CS
Peso (g/ml) - Weight (g/lm) 460
Colour fastness to light (Xenotest)
Blue scale UNI EN 105-B02 5

Abrasion résistance (rubs)
100.000 cycles Martindale
Reazione al fuoco - Flammability
Italy - Class 1
Germany - B1 DIN 4102 - France - Mi

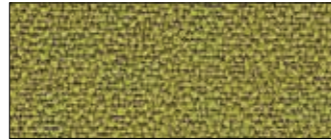
BS 5852 Crib 5 using a CM Foam 35 kg/cu.m
EN 1021 Part.1-2 using a CM Foam 35 kg/cu.m
USA Calif. Bull. 117 Section E Part1
IMO 688(17) - IMO 563 (14) - IMO 653 (16) - IMO
RES.A 652 (16) - FTP Code MSC 61 (67)



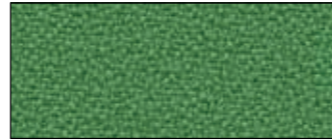
YS071



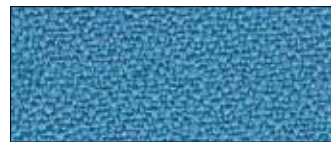
YS091



YS077



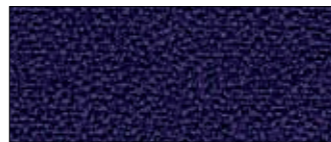
YS159



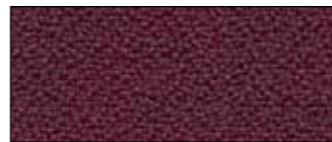
YS073



YS005



YS084



YS030



YS094



YS081



YS086



YS009



YS072



YS076



YS079



YS027

T



T 24/7

Composizione - Composition
50%Polyamide / 33% Wool /10%
Flame Retardant Viscose 7% Viscose
Peso (g/ml) - Weight (g/lm) 435
Resistenza all'abrasione (cicli)
Abrasion résistance (rubs)

500.000 cycles Martindale
Solidità colori alla luce
Colour fastness to light (Xenotest)
Blue scale UNI EN 105-B02 6
Reazione al fuoco - Flammability
BS EN 1021-1:2006 (cigarette),

BS EN 1021-2:2006 (match),
BS 7176:2007 Low Hazard,
BS 5852:2006 Section 4 Ignition Source 5,
BS 7176:2007 Medium Hazard,
UNI 9175 Class 1 IM



T12

ME



MEDLEY

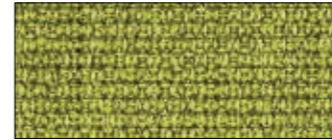
Composizione - Composition
100% Polyester FR
Peso (g/ml) - Weight (g/lm) 510
Resistenza all'abrasione (cicli)

Abrasion résistance (rubs)
EN ISO 12947:2000
75.000 cycles Martindale
Reazione al fuoco - Flammability

BS EN 1021 1&2
BS 5852 Part 1 0,1 Cigarette & match
Class Uno UNI 9175 Class 1 I EMME
CA TB 117-2013



ME62



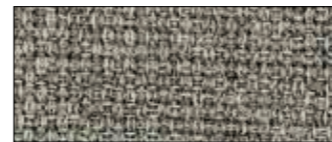
ME02



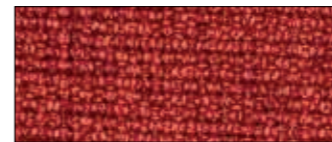
ME67



ME07



ME61



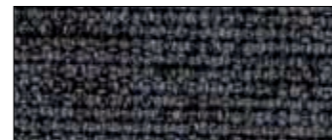
ME16



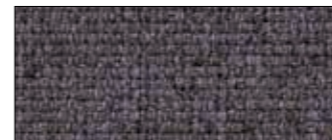
ME23



ME03



ME04



ME60

AL



ALBA

Composizione - Composition
100% Polyester
Peso (g/ml) - Weight (g/lm) 400
Abrasion résistance (rubs)
100.000 cycles Martindale

Solidità colori alla luce
Colour fastness to light (Xenotest)
Blue scale UNI EN 105-B02 4
Reazione al fuoco - Flammability
UNI 9175 Class 1 IM

NF 92501-7 Class M1 with treatment if
request
EN 1021-1 & 2 - BS Crib 5
BS 7176 Class Medium Hazard
California TB117



AL11



AL13



AL07



AL71



AL78



AL03



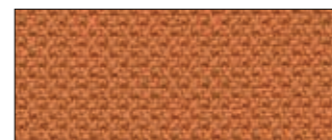
AL31



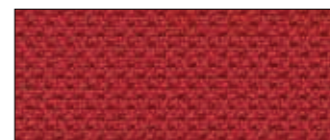
AL33



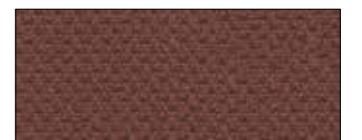
AL05



AL30



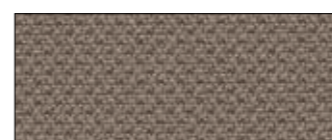
AL27



AL40



AL36



AL20



AL04

ATL

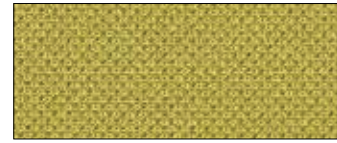


ATLANTIC

Composizione - Composition
100% Polyester FR
Peso (g/ml) - Weight (g/lm) 530
Colour fastness to light (Xenotest)

Blue scale UNI EN 105-B02 5-7
Abrasion résistance (rubs)
BS EN 14465 - EN ISO 12947-2
110.000 cycles Martindale

Reazione al fuoco-Flammability Italy Class 1
EN 1021 1&2 - CAL 117 - Onorm B 3825 B1
3800 - Q1 UK - AM 18 - NF D 60-013 - NFP
92-503:M3 - UNI 9175 Class 1 I EMME



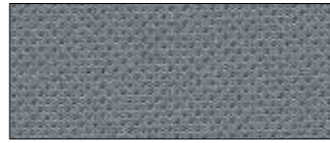
ATL048



ATL054



ATL030



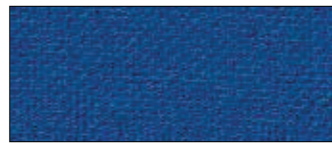
ATL011



ATL063



ATL125



ATL062



ATL037



ATL163



ATL078



ATL025



ATL999



ATL165



ATL034



ATL089

WM

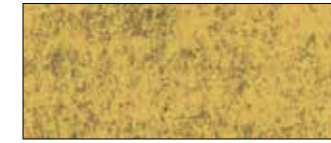


LANA MELANGE

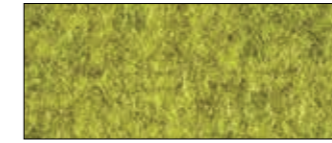
Composizione - Composition
100% Wool
Peso (g/ml) - Weight (g/lm) 410
Resistenza all'abrasione (cicli)
Abrasion résistance (rubs)

EN ISO 12947 :2000
50.000 cycles Martindale
Reazione al fuoco - Flammability
Italy Class 1M using a standard FR
EN 1021 Part.1-2 using a standard foam

20/22 Kg/cu.m
Colour fastness to light (Xenotest)
Blue scale UNI EN 105-B02 5
Assorbimento acustico
UNI EN ISO 354:2003



WM25



WM05



WM40



WM08



WM03



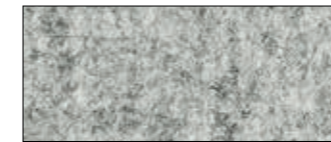
WM06



WM11



WM31



WM01



WM12

LK



LUCKY

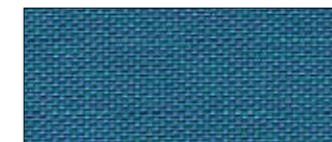
Composizione - Composition
100% Poliestere alta tenacità
100% High tenacity polyester
Peso (g/ml) - Weight (g/lm) 400
Resistenza all'abrasione (cicli)

Abrasion résistance (rubs)
200.000 cycles Martindale
Reazione al fuoco - Flammability
1.1M UNI 9175 - BS EN 1021-1:2006
BS EN 1021-2:2006

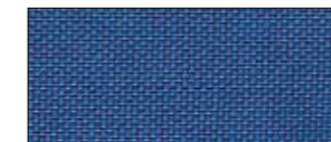
BS 5852:2006 (Crib 5)
California Technical Bulletin 117:2013
IMO - 2010 FTP CODE - M1
OEKO-TEX



LK13



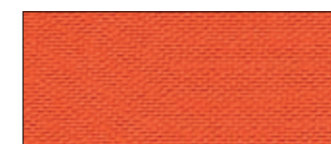
LK17



LK14



LK10



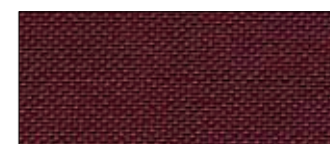
LK01



LK11



LK04



LK02



LK15



LK19



LK07



LK22

COLORIS

cuirs

ST



SWEET Leather

Composizione - Composition
Full grain real leather, smooth and soft grain
Vera pelle pieno fiore, grana liscia e morbida
Origine animale - Raw material
European raw hide
Solidità del colore allo strofino a secco

Dry Rub Fastness - ISO 11640 Val. 4
Solidità alla flessione - Flex crack
resistance ISO 5402 - 25.000 cycles
Solidità colori alla luce artificiale
Light Fastness xenon lamp
Blue scale UNI - EN - ISO 105-B02 - 4

Spessore - Thickness: 1.0 / 1.2 mm
Reazione al fuoco - Flammability
EN 1021 - 2014
Imo FTP: Part 8-Resolution A.652 (16)
NI/0: Cigarette Test NI/1: Match Test
TB 117:2013 (California)



ST96



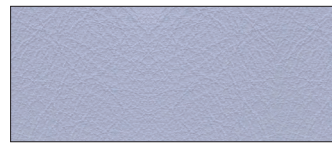
ST22



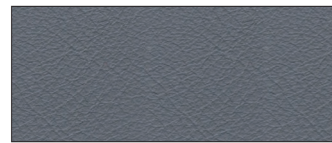
ST07



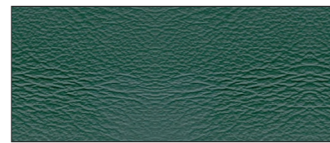
ST11



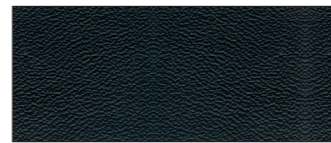
ST65



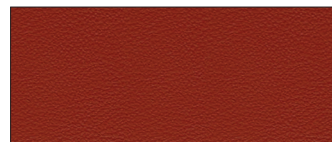
ST67



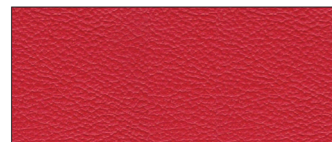
ST53



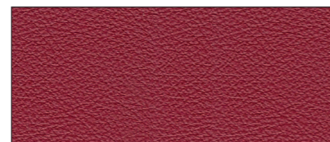
ST69



ST98



ST32



ST34



ST38

SE

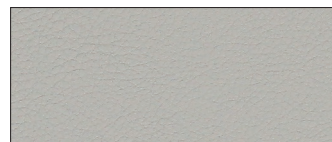


SECRET Eco-Leather

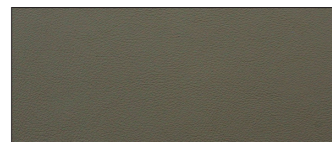
Composizione - Composition
76% PVC - 2% PU / 22% PES
Peso (g/ml) - Weight (g/lm) 540
Abrasion résistance (rubs)
EN ISO 5470-2 60.000 cycles Martindale

Solidità colori alla luce
Colour fastness to light (Xenotest)
Blue scale UNI EN 105-B02 6
Reazione al fuoco - Flammability
UNI 9175 classe 1 IM

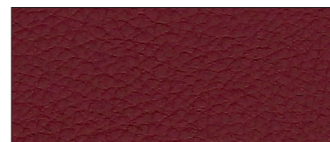
EN 1021- part. 1-2
BS 5852-1 match test
TB 117:2013 (California)



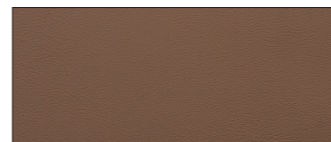
SE15



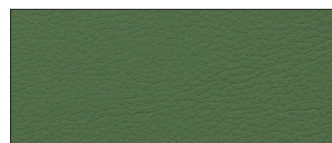
SE27



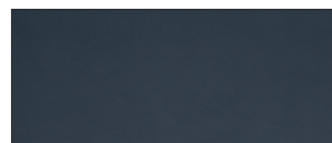
SE19



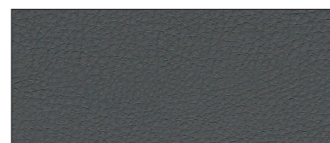
SE26



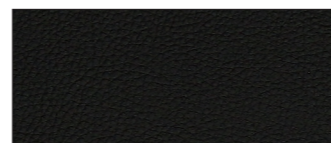
SE28



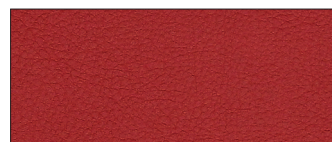
SE14



SE16



SE17



SE09



SE18

KE

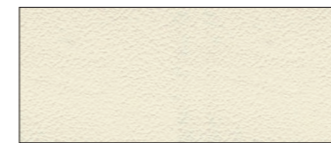


KEEN

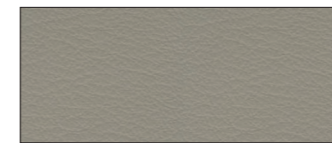
Composizione - Composition
Fiore smerigliato e stampato Uruguay
Corrected and printed grain Uruguay
Origine animale - Raw material
Solidità del colore allo strofino a secco
Dry Rub Fastness - ISO 11640 Val. 5

Solidità alla flessione - Flex crack
resistance ISO 5402 - >20.000 cycles
Solidità colori alla luce artificiale
Light Fastness xenon lamp
Blue scale UNI - EN - ISO 105-B02 - 8
Spessore - Thickness: 0,9 / 1,0 mm

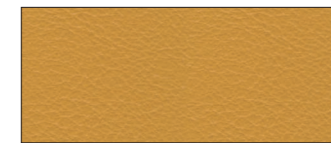
Reazione al fuoco - Flammability
BS 5852 Part. 1 NI/0: Cigarette Test NI/1: Match Test
Imo FTP: Part 8-Resolution A.652 (16)
NI/0: Cigarette Test NI/1: Match Test
TB 117:2013 (California)



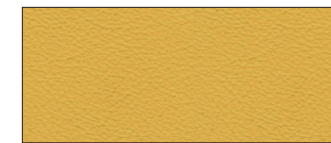
KE02



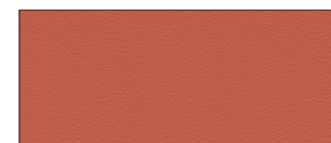
KE04



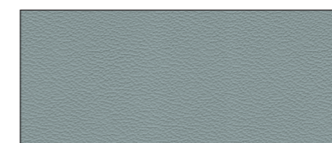
KE05



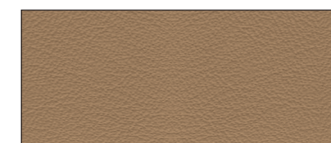
KE06



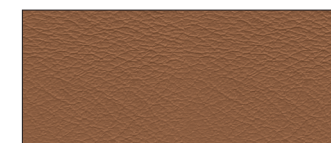
KE07



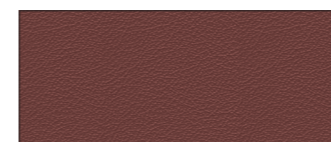
KE08



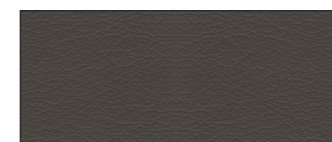
KE09



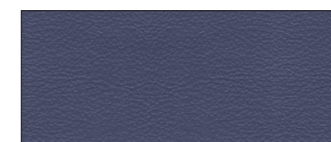
KE10



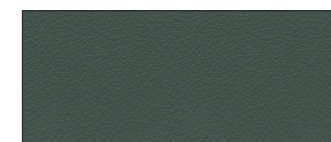
KE11



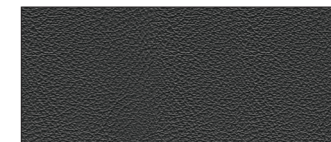
KE12



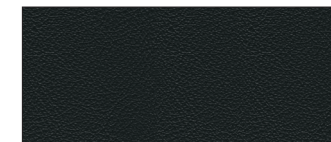
KE13



KE15



KE16



KE17

T+C



TOP GRAIN Leather

Composizione - Composition
Pelle bovina smerigliata stampa Madras
Real madras print leather combined with
ecological leather, same grain and colour
Origine extra europea - Extra european origin
Solidità del colore allo strofino a secco

Dry Rub Fastness - ISO 11640 Val. 4
Solidità alla flessione
Flex crack resistance ISO 5402
50.000 cycles
Solidità colori alla luce artificiale
Light Fastness xenon lamp

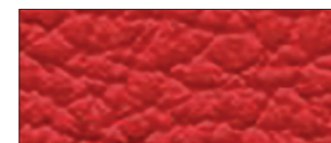
Blue scale UNI - EN - ISO 105-B02 - 6
Spessore - Thickness: 0,9 / 1,0 mm
Resistenza al fuoco - Burning behaviour
UNI 9175:2010/UNI 9175:1987 / UNI
9175_FA:1994

COVENTRY F aux Leather

Composizione - Composition
Superficie-surface: PVC 82% - Rayon 7%
Base-base: Poliestere-Polyester 11%
Solidità del colore allo strofino a secco
Dry Rub Fastness - ISO 11640 Val. 4

Solidità all'abrasione - Abrasion
ISO 12947/1-2 Martindale 50.000 cycles
Solidità colori alla luce artificiale
Light Fastness xenon lamp
Blue scale UNI - EN - ISO 105-B02 - 4

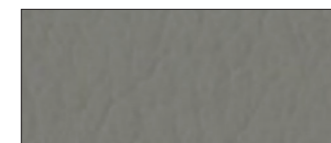
Spessore - Thickness: 0,9 +- 5% mm
Resistenza al fuoco - Burning behaviour
UNI 9175:1987 / UNI 9175_FA:1994
BS5852-1:1979 / BS5852-2:1979
EN 1021:2014



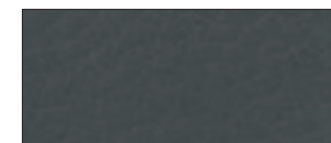
T+C41



T+C01



T+C84



T+C98



T+C60