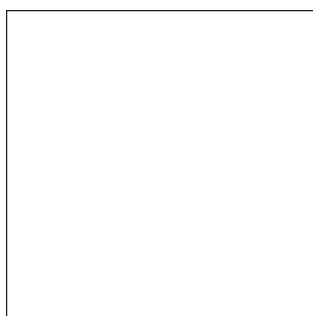


Plateau Mélaminés unis



67 - white pastel



26 - aluminium satinato



154 - anthracite



08 - black

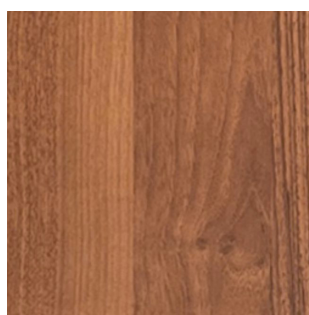
Mélaminés bois



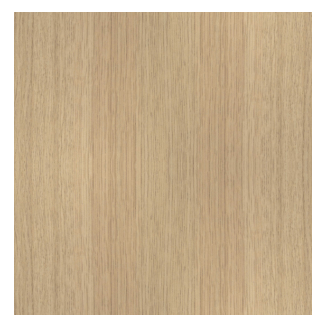
39 - polar birch



170 - acacia



106 - lowland nut



31 - canadian oak



64 - cocoa



171 - dark walnut



167 - grey oak

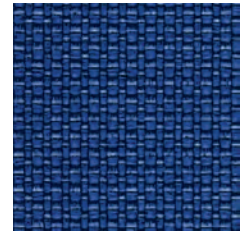
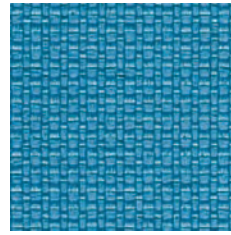
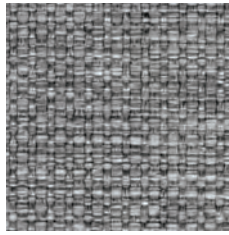
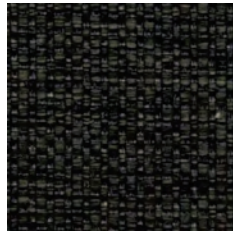


168 - natural oak



169 - honey oak

NEMO



Group I

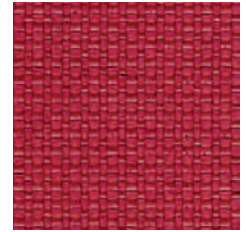
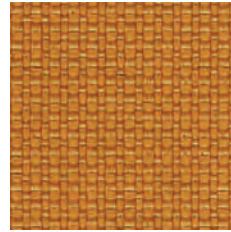
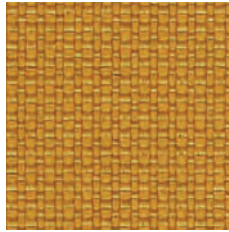
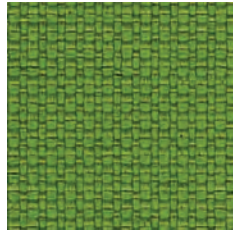
NE-16

NE-14

NE-10

NE-17

NE-15



NE-1

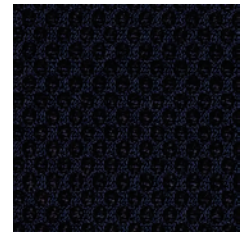
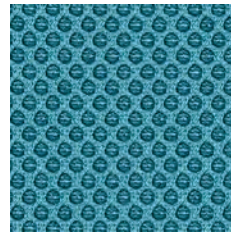
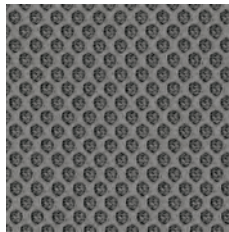
NE-9

NE-2

NE-3

NE-5

RUNNER



Group II

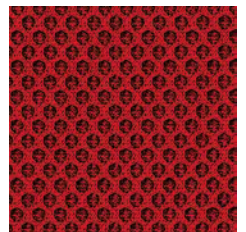
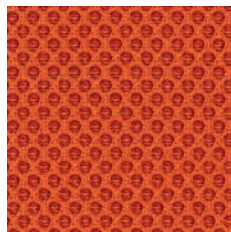
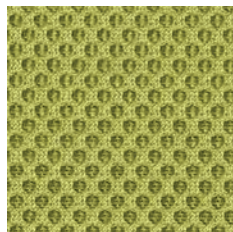
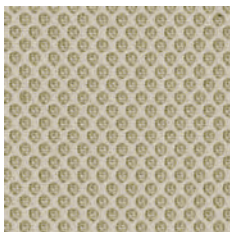
R-60999

R-60025

R-60011

R-66063

R-66064



R-61128

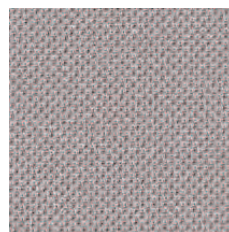
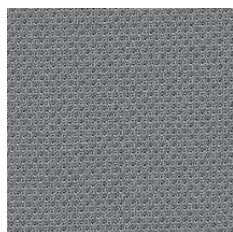
R-68056

R-68110

R-63034

R-64089

ATLANTIC



Group II

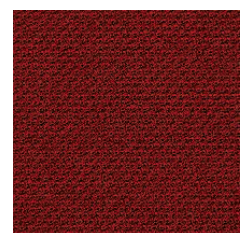
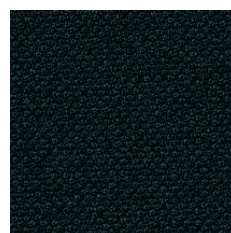
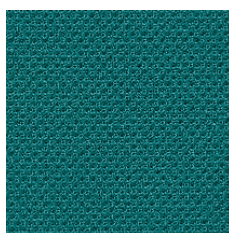
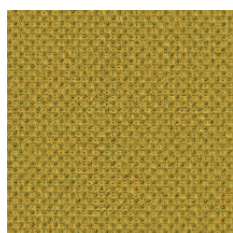
A-60025

A-60011

A-60141

A-65037

A-66064



A-61078

A-62048

A-67030

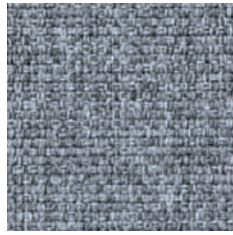
A-67043

A-64089

MEDLEY



M-60999



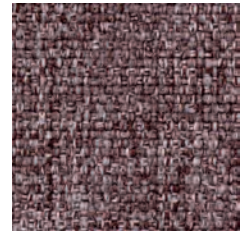
M-66008



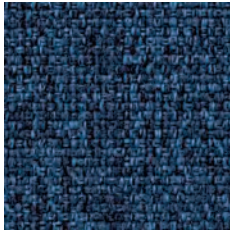
M-60003



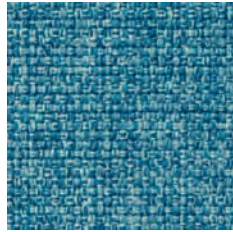
M-61189



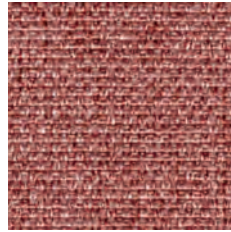
M-65011



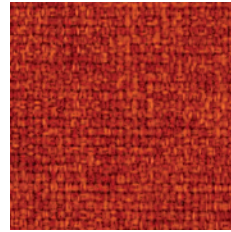
M-66010



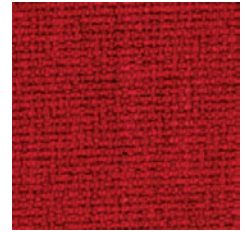
M-67006



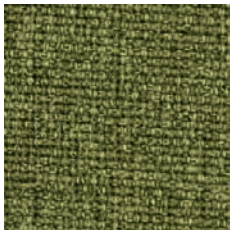
M-63064



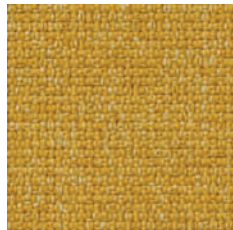
M-63017



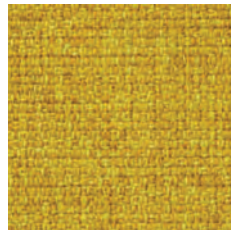
M-64019



M-68005



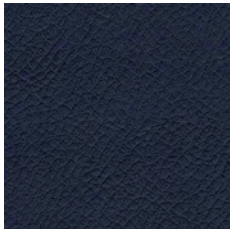
M-62054



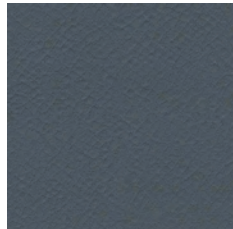
M-62002

Group II

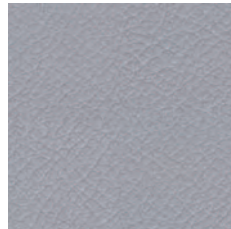
VITA



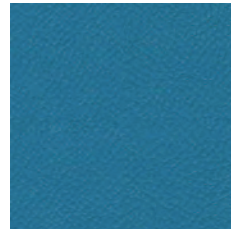
V-07



V-04



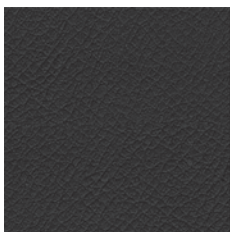
V-01



V-18



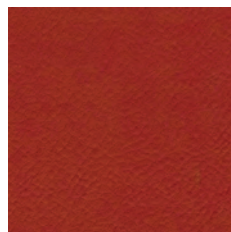
V-19



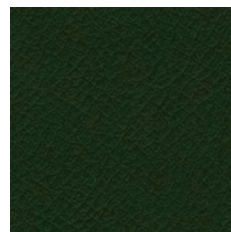
V-12



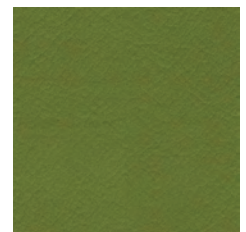
V-03



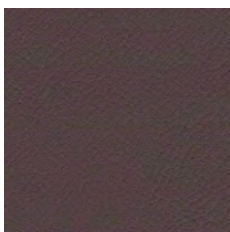
V-11



V-29



V-09



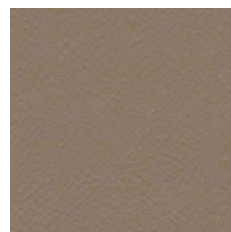
V-10



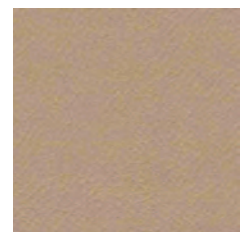
V-46



V-39



V-02

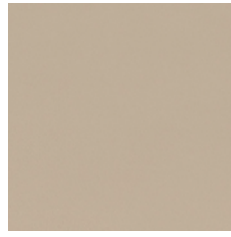


V-44

Group II

CHARLES

Group II



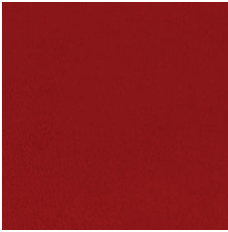
C-01

C-05

C-06

C-14

C-18



C-21

C-30

C-31

C-32

C-35



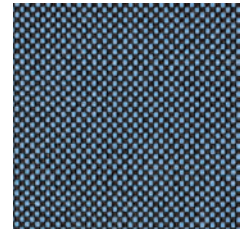
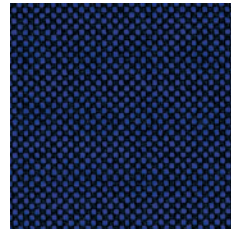
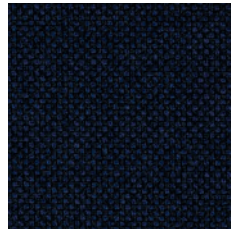
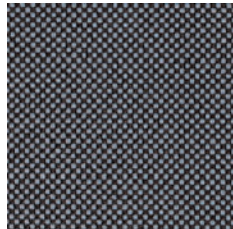
C-41

C-44

C-45

GO CHECK

Group II



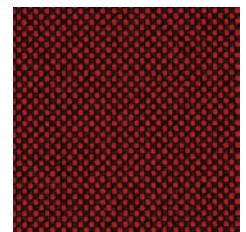
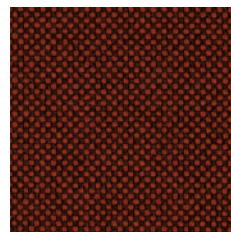
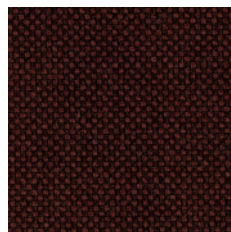
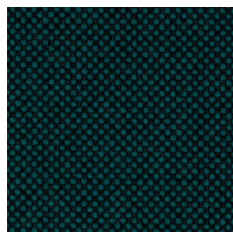
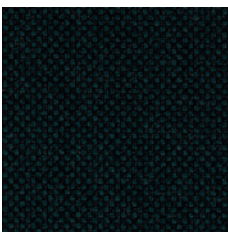
G-60084

G-60080

G-66138

G-66136

G-66135



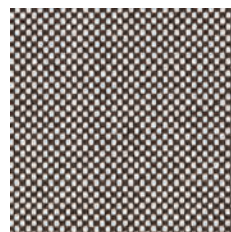
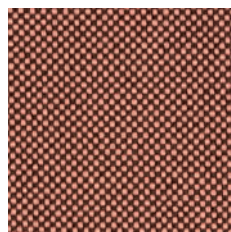
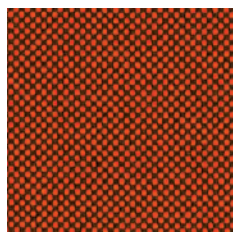
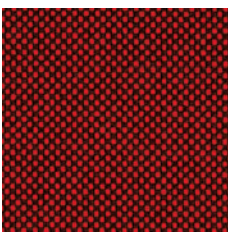
G-68149

G-68152

G-61145

G-61144

G-64172



G-64171

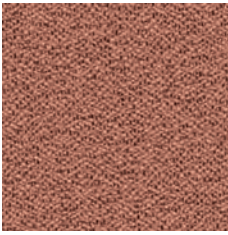
G-63079

G-64183

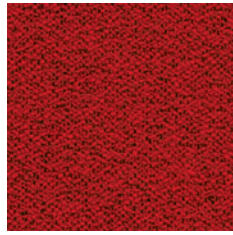
G-60079

MICA

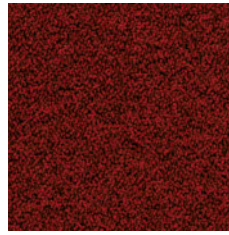
Group II



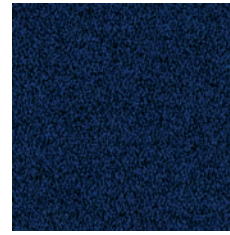
MC-2496-64183



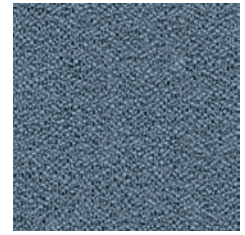
MC-2496-64146



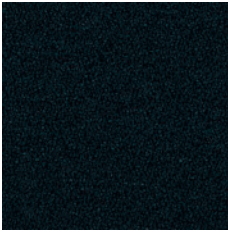
MC-2497-64146



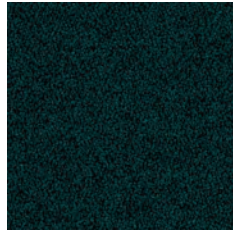
MC-2497-66006



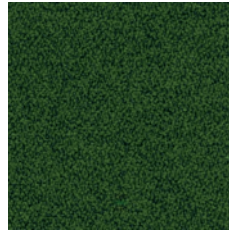
MC-2496-66030



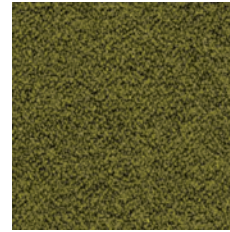
MC-2497-67042



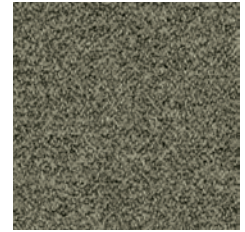
MC-2497-67017



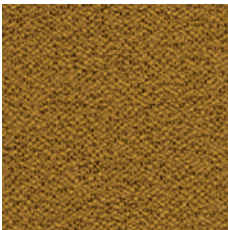
MC-2497-68146



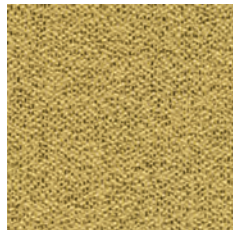
MC-2497-62048



MC-2496-62093



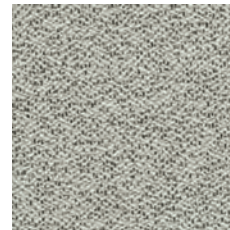
MC-2496-62095



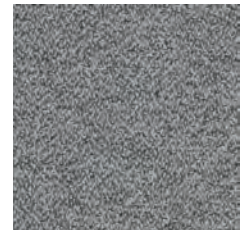
MC-2496-62096



MC-2496-61008



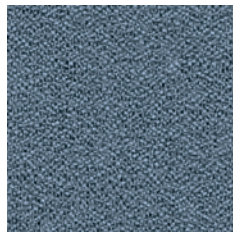
MC-2496-60000



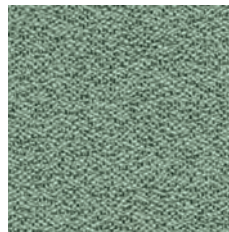
MC-2497-60000



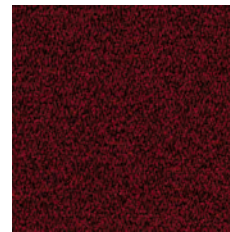
MC-2497-60021



MC-2496-66031



MC-2496-67015



MC-2497-64029

SYNERGY

Group III



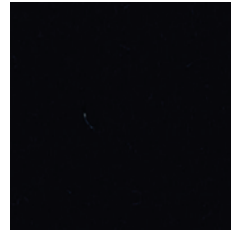
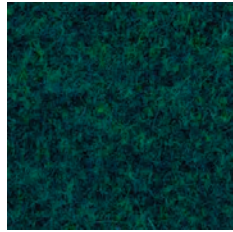
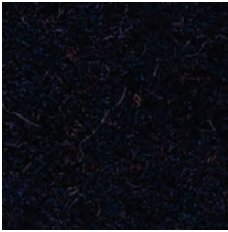
LDS27

LDS29

LDS20

LDS08

LDS19



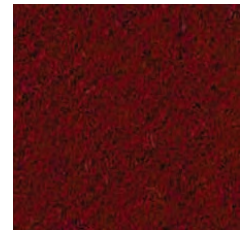
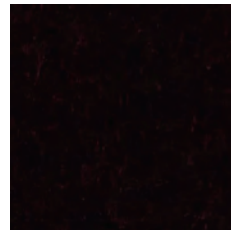
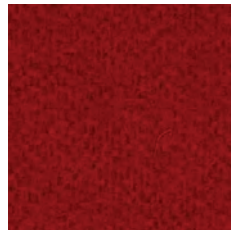
LDS61

LDS50

LDS60

LDS69

LDS57



LDS44

LDS84

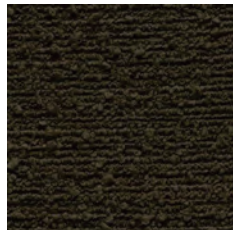
LDS86

LDS88

LDS79

TESSA

Group III



T-02

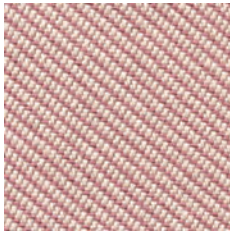
T-03

T-09

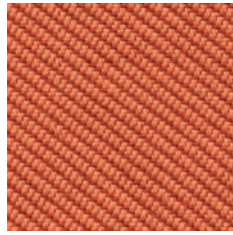
T-05

T-08

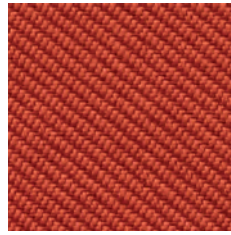
OCEANIC



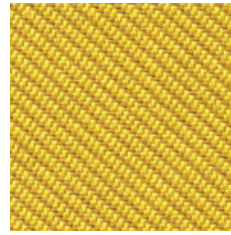
O-16



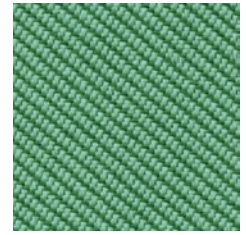
O-05



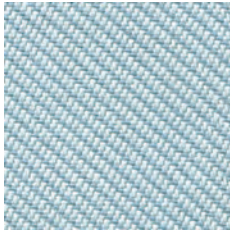
O-12



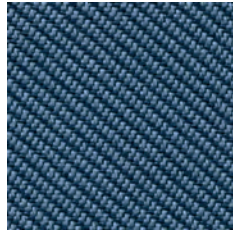
O-07



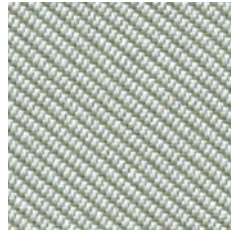
O-04



O-15



O-11



O-13



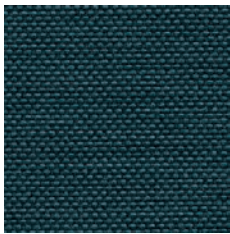
O-08



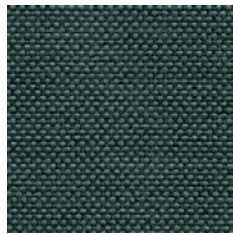
O-01

Group III

QUEST



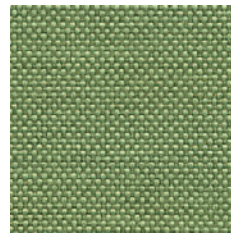
Q-08



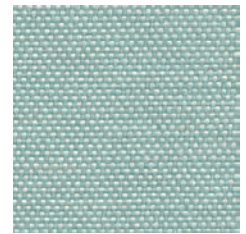
Q-04



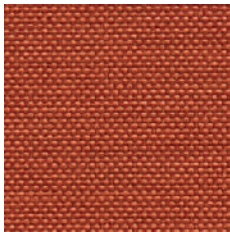
Q-18



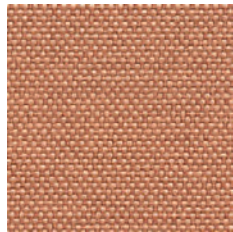
Q-13



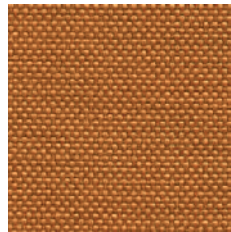
Q-07



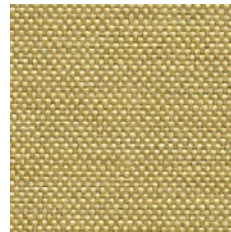
Q-24



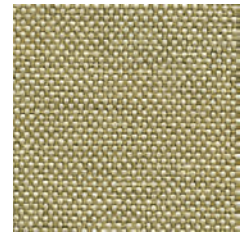
Q-26



Q-25



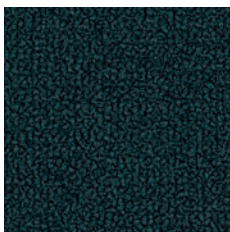
Q-21



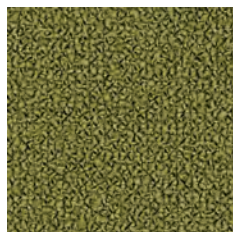
Q-19

Group III

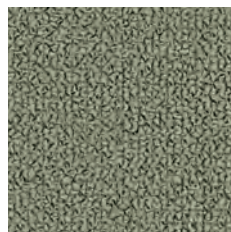
GRAIN



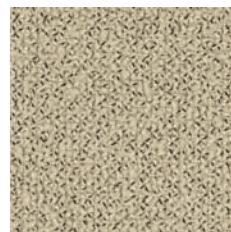
GR-66232



GR-68243



GR-60301

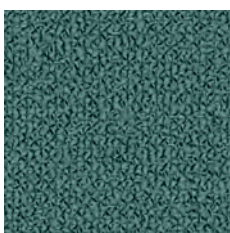


GR-61252

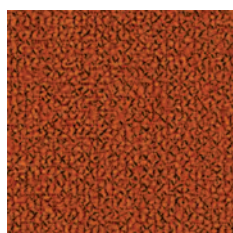


GR-61250

Group III



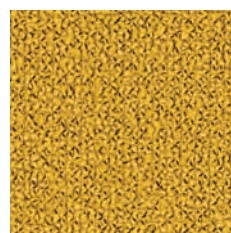
GR-66236



GR-63117



GR-62016



GR-62122



GR-64249

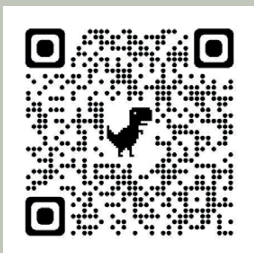
| Price group | Fabric | Material | Weight | Abrasion resistance rubs | Pilling resistance | Colour fastness to light | Colour fastness to rubbing | Flammability | More information |
|-------------|----------|---|-------------------|--|--|--|--|---|--|
| I | NEMO | Polyester 100% | 366g/m2 | PN-EN ISO 12947 - 2:2 100,000 | Scale 1-8, max 8, PN-EN ISO 105 B02:2013 3-4 | Scale 1-5, max 5, PN-EN 1021 - 2:2007, PN-EN 1021 - 1:2007 | Scale 1-5, max 5, EN ISO 105x12, (wet/dry) 4-5 | Cigarette: PN-EN 1021-1:2014-12 Match flame: PN-EN 1021-2:2014-12 | |
| II | RUNNER | 80% polyester / 20% post-consumer recycled polyeste | 320g/m2, 510g/lm | 70,000 Martindale, BS EN 14465, EN ISO 12947-2 , Double rubs wyzenbeek (ASTM D4157-07) (heavy duty upholstery) | Scale 1-5, max 5, EN ISO 12945-2 4-5 | Scale 1-8, max 8, EN ISO 105-B02 5-7 | Scale 1-5, max 5, EN ISO 105x12, (wet/dry) 4-5 | BS EN 1021-2 Match, BS EN 1021-1 Cigarette, California Bulletin CAL 117-E-Class 1, CA TB 117-2013, Class Uno UNI 9175 Class 1 | Acoustic test sound absorption ISO 354 |
| II | MEDLEY | Polyester 100% | 364g/m2, 510g/lm | 75,000 Martindale | Scale 1-5, max 5, EN ISO 12945-2 4 | Scale 1-8, max 8, EN ISO 105-B02 5-7 | Scale 1-5, max 5, EN ISO 105x12, (wet/dry) 4-5/4-5 | BS EN 1021-2 Match, BS EN 1021-1 Cigarette, California Bulletin CAL 117-E-Class 1, CA TB 117-2013, Class Uno UNI 9175 Class 1 | Acoustic test sound absorption: ISO 354 |
| II | ATLANTIC | Polyester 100% | 353g/m2, 530g/lm | 110,000 Martindale, EN ISO 12947-2) | | Scale 1-8, max 8, EN ISO 105-B02 5-7 | Scale 1-5, max 5, EN ISO 105x12, (wet/dry) 4-5/4-5 | BS EN 1021-2 Match, BS EN 1021-1 Cigarette, ASTM E 84, BS 476 Part 7, Class Uno UNI 9175 Class 1, NF P 92-503 M3P, CA TB 117-2013 | |
| II | VITA | Surface: PVC, 98.5%, PU 1.5% Substrate: Polyester 50%, 50% Cotton | 850g/m2, 1190g/lm | 100,000 Martindale, EN ISO 5470-2:2003, | | Scale 1-8, max 8, EN ISO 105-B02 5-7 | Scale 1-5, max 5, EN ISO 105x12, (wet/dry) 4-5/4-5 | BS EN 1021-2 Match, BS EN 1021-1 Cigarette, BS 5852:2006 Section 4, Ignition Source 5, BS 7176:2017 Medium Hazard NF P 95 503 M2, FMVSS 302 (ISO 3795) | Flexing cycles: BS EN ISO 7854:1997 Method B, 400,000, Anti-microbial/ Anti-fungal: AATCC 147:2011 |
| II | CHARLES | Polyester 100% | 433g/m2 | 90,000 Martindale, EN ISO 12947-2 | Scale 1-5, max 5, EN ISO 12945-2 5 | EN ISO 105-B02 5 | Scale 1-5, max 5, EN ISO 105-X12, (wet/dry) 4-5 | EN1021-2 | Thread offset in the seam: EN ISO 13 936-2 |
| II | GO CHECK | Trevira cs 100% | 310g/m2 | 80,000 Martindale, EN ISO 12947-1,2 60,000 Double rubs wyzenbeek (ASTM D4157-07) | Scale 1-5, max 5, EN ISO 12945-2 5 | Scale 1-8, max 8, EN ISO 105-B02 5-8 | Scale 1-5, max 5, EN ISO 105-X12:2001, (wet/dry) 4-5/4-5 | BS EN 1021-1&2 Cigarette and Match, BS 5852:2006 Crib 5, BS 7176:2017 Medium Hazard, NFP 92-503/504/505 M1, Class Uno UNI 9175 Class 1 | |
| II | MICA | 97% post-consumer recycled polyester / 3% polyester | 218g/m2 | 60,000 Martindale, EN ISO 12947-2 100,000 Double rubs wyzenbeek (ASTM D4157-07) | Scale 1-5, max 5, EN ISO 12945-2 4-5 | Scale 1-8, max 8, EN ISO 105-B02 5-8 | Scale 1-5, max 5, EN ISO 105-X12:2001, (wet/dry) 4-5/4-5 | BS EN 1021-1 Cigarette, EN ISO 105-X12:2001, (wet/dry) 4-5/4-5, CA TB 117-2013, ASTM E 84 Class I, BS 476 Part 7 Class I | Acoustic test air flow resistanc EN 29053 & ISO 9053-1 (airflow resistance) |
| III | SYNERGY | Virgin Wool 95%, Polyamide 5% | 400g/m2 560g/lm | 100,000 Martindale | | ISO 105 B02: 5 | Scale 1-5, max 5, EN ISO 105-X12:2001, (wet/dry) 4/4 | BS EN 1021-1&2 Cigarette and Match, BS 7176 Low Hazard. UNI 9175 Classe 1 IM, B 3825 & A 3800-1 | |
| III | TESSA | Poliester 95%, Akryl 5% | 500g/m2 | >75,000 Martindale ISO 12 497-2 | Scale 1-5, max 5, EN ISO 12945-2 4-5 | ISO 105 B02: 4 | Scale 1-5, max 5, EN ISO 105-X12:2001, (wet/dry) 4-5/4-5 | | Thread offset in the seam: EN ISO 13 936-2 |
| III | OCEANIC | 100% post-consumer recycled polyester including 50% Seaqual Yarn | 497g/m2 | ≥100,000 Martindale | | 5 (ISO 105 - B02), OOC16: 4/5 (ISO 105 - B02) | Scale 1-5, max 5, EN ISO 105-X12:2001, (wet/dry) 4-5/4-5 | BS EN 1021-1&2 Cigarette and Match, BS 7176 Low Hazard. BS 5852 Ignition Source 5 with EnviroFlam5, BS 7176 Medium Hazard with EnviroFlam5 | |
| III | QUEST | 100% post-consumer recycled polyester including 75% Seaqual Yarn | 330g/m2 | ≥100,000 Martindale | | 4-6 (ISO 105 - B02) | Scale 1-5, max 5, EN ISO 105-X12:2001, (wet/dry) 4/4 | BS EN 1021-1&2 Cigarette and Match, BS 7176 Low Hazard. BS 5852 Ignition Source 5 with EnviroFlam5, BS 7176 Medium Hazard with EnviroFlam5, B 3825 & A 3800-1 | |
| III | GRAIN | 2287: 92% post-consumer recycled polyester / 8% polyester 2288: 80% post-consumer recycled | 439g/m2 | 100,000 Martindale (EN ISO 12947-2), double rubs wyzenbeek (ASTM D4157-07) (heavy duty upholstery) 100,000 | Scale 1-5, max 5, EN ISO 12945-2 5 | scale 1-8, max. 8 5-7 (ISO 105 - B02) | Scale 1-5, max 5, EN ISO 105-X12:2001, (wet/dry) 4-5/4-5 | BS EN 1021-1&2 Cigarette and Match, CA TB 117-2013 | |

Attention

Colours and decors structure of shown material may differently from the reality.

EPOXIA

6 avenue Charles de Gaulle
78150 Le Chesnay
+33 1 39 66 00 77
contact@epoxia.com
www.epoxia.com



Rejoignez-nous sur nos réseaux sociaux

