

Prostoria



Materials & Maintenance

solid wood

Natural imperfections of wood, such as variations in colour and texture, knots and tree rings, are not considered faults and undesirable characteristics but rather values of the natural material used. Our wood is treated with oil or lacquer in such a way that the material appears as naturally as possible, emphasising the appearance of an open tree ring. Colour lacquer does not completely fill the pores of wood to highlight the natural quality of the material, and tree rings remain visible. There are no visible tree rings in lacquered plywood. Oil and lacquer on all wooden surfaces always give matte effect, which is Prostoria's visual standard for the processing and protection of the wood.

Outdoor wood has an even more pronounced change in the tone and intensity of visible tree rings over time, which is not considered as a flaw but a natural quality and refinement of the product.

high quality oil



OAK LIGHT



OAK NATURE



OAK DARK



WALNUT
EUROPEAN

outdoor oil



TEAK

lacquer matte



OAK LIGHT



OAK NATURE



OAK DARK

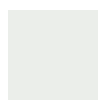


ASH



WALNUT
EUROPEAN

colour lacquer matte



grey white



beige



yellow



red



red brown



light green



blue



sapphire blue



antique green



dark grey



black

Wipe the surface regularly with a clean and dry cloth. If the surface of the product is dirty, you can wipe it using a well-drained cloth soaked in water or a light neutral soap. Remove any soapy residue immediately. If the surface is slightly damaged or appears matt, we recommend our wood surface maintenance kit. Avoid products containing acetone, diluents, ammonia, abrasive detergents or furniture wax. avoid placing greasy, wet, hot or cold objects directly on the solid wood surfaces, as they may leave a permanent trace.

Materials & Maintenance

table tops

Fenix NTM is a table top finish in the form of a thin laminate that is pressed to the bottom and top of the mdf. The sides of the mdf are lacquered. Fenix is a durable material that does not show fingerprints. It can be cleaned using a damp soft cloth soaked in warm water or a solution of water and mild detergent. We recommend the use of the Fenix maintenance kit (contact your nearest salon or the dealer where you purchased the product). Damages such as scratches that are not cut in can be treated thermally using an iron and a damp cloth.

MDF + FENIX NTM



0720
black



0724
dark grey



0725
light grey



0718
beige



0032
white

TRESPA HPL

Trespa Meteon outdoor table tops have a compressed surface, virtually pore-free, making them impervious to contamination. This is why Trespa Meteon® is highly resistant to most chemicals, including many non-aggressive and aggressive cleaning agents.

Do not use abrasive or polishing cleaners. Use only clean sponges and soft cloths. Algae and mould will not penetrate the pores of the material so they are easy to clean just like dust, stains or fingerprints. You can wash them off using a universal household cleaner. Rinse and wipe the board using a soft cloth to avoid any traces remaining after washing.



L 90.0.0
black



L 21.5.1
grey



L 05.0.0
white

GLASS

Glass surfaces can be cleaned with a well-drained soft cloth soaked in a mixture of alcohol and water or glass cleaner. Wipe the surface with a dry, lint-free cloth. Avoid products containing acetone, ammonia, chlorine, and solvents, abrasives, and furniture wax.



PARSOL GREY



PARSOL BRONZE

Materials & Maintenance

table tops

Compact boards are high-pressure thermoset laminates (HPL) obtained by pressing under high pressure and high temperature. Refined with decor on both sides, this multi-layer material is at the same time extremely resistant and long-lasting as well as easy to maintain. It also provides high resistance to scratches, wear, solvents, chemicals, moisture and heat. The surface of Compact boards is extremely resistant to dirt, but if necessary it can be treated with standard non-abrasive cleaners.

COMPACT BOARDS



**COMPACT
BLACK**



**COMPACT
WHITE**

Materials & Maintenance

metal

All powder coated metal products and elements have a matte finish, which is Prostoria's visual standard used in the processing and protection of metallic materials. Hand-welded metal parts may have minor imperfections that do not affect the quality or function of the product, but are a reflection of the manual work of our craftsmen. Metal products intended for outdoor use have a double finish - a primer for better mechanical resistance and a coloured coating for protection against corrosion.

To clean powder coated metal products use a damp soft cloth soaked in a solution of water and a pH neutral detergent, and wipe using a clean, dry and soft cloth.



white



grey white



light grey



grey



dark grey



beige



black



antique green



yellow



yellow green



red



ruby red



orange



red ochre



red brown



pale green



light green



nickel green



pastel blue



blue



sapphire blue

Product Chart:

NOTE - PLUS + HIGHLY RECOMMENDED | DOT • AVAILABLE | X NOT AVAILABLE

	CONTOUR 200	CUVA 200	CARC BIC 200	ATLAS 300	BOHEMIAN 300	CREPE 300	DUFFY 300	GORDON 300	HAKU 300	MYSTIC 300	ORSETTO 300	TUNDRA 300	ARCO 400
3ANGLE	•	•	+	•	•	•	•	•	•	•	•	•	+
ABSENT	•	•	•	•	•	•	•	•	×	×	+	•	+
BAVUL	•	•	•	+	+	+	+	+	•	+	+	•	+
BIK CUSHION	+	+	+	+	+	+	+	+	+	+	+	+	+
CLASSIC	•	•	•	•	+	+	+	+	+	•	+	•	+
CLOUD	×	×	•	×	•	•	•	+	•	•	•	•	•
COMBINE	•	×	•	•	+	+	•	+	•	•	+	•	+
COMBO	•	•	•	•	•	•	+	+	•	•	+	•	+
CONVERT	•	•	•	+	•	•	•	•	•	•	•	•	+
DOBRA	•	•	•	+	•	•	•	•	•	•	•	•	•
ECHO	•	×	•	×	•	•	•	+	×	•	+	•	+
ELEGANCE	•	•	+	•	•	•	•	+	•	•	•	•	+
ELEGANCE LUX	•	×	+	×	•	•	•	+	•	•	+	•	+
FADE	•	•	•	•	•	•	•	•	•	•	•	•	+
IMPRESSION	•	•	+	•	+	+	•	+	×	•	+	•	+
JUGO	×	×	×	×	×	×	×	×	×	×	×	×	×
KLASTER	•	•	•	•	•	•	•	•	•	•	+	•	+
KONTRAPUNKT	•	•	•	•	•	•	•	+	•	•	+	•	+
LAYOUT	•	•	•	•	•	•	•	+	•	•	+	•	•
MATCH	•	•	•	•	•	•	+	+	•	•	+	+	+
MONK EASY CHAIRS, CHAIRS, BARSTOOLS WITH BACKREST	•	•	•	•	•	•	•	+	•	•	+	•	+
MONK BARSTOOLS	•	•	•	+	•	•	•	+	+	•	+	•	+
MONK BENCH CUSHION	•	•	•	•	•	•	•	+	•	•	+	•	+
OBLIKANT COVER	•	•	•	+	•	•	•	+	+	•	+	•	+
OBLIQUE	•	•	•	+	•	•	•	•	•	•	•	•	+
OSMO CUSHION	×	×	×	×	×	×	×	×	×	×	×	×	×
PIUN	•	•	•	+	•	•	•	•	•	•	+	•	+
PIL-LOW	•	•	•	•	×	×	×	×	•	•	×	×	+
POLYGON	•	•	•	+	•	•	•	•	•	•	•	•	+
REVOLVE	•	•	•	•	•	•	•	•	×	•	•	×	+
RHOMB CUSHION	•	•	•	+	•	•	•	•	•	•	•	•	+
ROSTRUM *	•	•	•	•	•	•	•	•	•	•	•	•	+
SABOT	•	•	•	•	+	+	•	+	•	•	•	•	+
SEAM	•	•	•	•	+	+	•	•	•	•	•	•	+
SEGMENT	•	•	•	•	•	•	•	•	•	•	•	•	+
SEPRE / * ROSTRUM DIVIDERS	×	×	×	×	×	×	×	×	×	×	•	×	+
STRAIN EASY CHAIR	•	•	•	+	•	•	•	+	•	•	+	•	+
STRAIN LOW CHAIR	•	•	•	+	•	•	•	•	•	•	•	•	+
STRAIN & UNSTRAIN CHAIRS	•	•	•	+	•	•	•	•	•	+	•	•	+
UMOMOKU	×	×	×	×	×	×	×	×	×	×	×	×	×
UP-LIFT	•	•	•	•	•	•	•	•	•	•	•	×	•
TINKER	•	×	•	•	+	+	+	+	×	•	+	•	+
TOGGLE	•	•	+	•	•	•	•	+	•	•	+	•	+
TRIFIDAE	•	•	•	•	•	•	•	•	•	•	•	•	+
TRIFIDAE CHAIR & EASY CHAIR	•	•	•	•	•	•	•	•	•	×	•	•	+
CUSHIONS	•	•	+	•	+	+	+	+	•	+	+	•	+

Product Chart:

NOTE - PLUS + HIGHLY RECOMMENDED | DOT • AVAILABLE | X NOT AVAILABLE

	CREDO	DIVINA 3	DIVINA MD	DIVINA MELANGE	NOVUM	PLANUM	HALLINGDAL 65	MIZMAZE	MOSS	STEELCUT TRIO 3	UNIFORM MELANGE	CODA 2	SISU
	400	400	400	400	400	400	500	500	500	500	600	700	700
3ANGLE	+	+	+	+	•	•	+	•	•	+	•	+	•
ABSENT	+	•	•	•	+	+	+	+	•	•	+	•	•
BAVUL	+	+	+	+	•	+	+	+	•	•	•	•	•
BIK CUSHION	+	•	•	•	•	•	+	•	+	•	•	•	•
CLASSIC	+	•	•	•	•	•	+	•	+	•	•	•	•
CLOUD	+	X	X	X	X	X	+	X	+	X	X	+	+
COMBINE	+	•	•	•	•	X	+	•	+	•	•	+	+
COMBO	+	•	•	•	+	•	+	•	+	•	•	•	•
CONVERT	•	+	+	+	+	•	+	•	•	+	•	•	•
DOBRA	+	+	+	+	•	•	+	•	•	•	•	+	•
ECHO	+	•	•	•	•	X	+	•	+	•	•	+	•
ELEGANCE	+	•	•	•	•	•	+	•	+	•	•	+	•
ELEGANCE LUX	+	•	•	•	•	X	+	•	+	•	•	+	•
FADE	+	+	+	+	•	•	+	•	+	•	•	•	•
IMPRESSION	+	•	•	•	•	•	+	•	+	•	•	+	+
JUGO	X	X	X	X	X	X	X	X	X	X	X	X	X
KLASTER	•	+	+	+	•	•	+	+	+	•	+	+	•
KONTRAPUNKT	+	•	•	•	•	•	+	•	+	+	•	•	•
LAYOUT	+	•	•	•	•	•	+	•	+	•	•	•	•
MATCH	+	•	•	•	+	•	+	•	+	•	•	+	+
MONK EASY CHAIRS, CHAIRS, BARSTOOLS WITH BACKREST	+	+	+	+	•	•	+	+	+	+	+	•	•
MONK BARSTOOLS	+	+	+	+	•	•	+	+	+	+	+	•	•
MONK BENCH CUSHION	+	+	+	+	•	•	+	•	+	+	•	•	•
OBLIKANT COVER	+	+	+	+	•	•	+	•	+	+	•	•	•
OBLIQUE	+	+	+	+	•	•	+	•	•	+	•	•	•
OSMO CUSHION	X	X	X	X	X	X	X	X	X	X	X	X	X
PIJUN	•	+	+	+	•	•	+	•	+	+	•	•	•
PIL-LOW	•	+	+	+	+	•	+	•	X	•	•	•	•
POLYGON	+	•	•	•	+	•	+	•	•	+	•	•	•
REVOLVE	•	+	+	+	•	•	+	•	•	•	•	X	X
RHOMB CUSHION	•	+	+	+	•	•	+	•	•	+	•	+	•
ROSTRUM *	+	+	+	+	•	•	+	•	•	+	•	•	•
SABOT	+	+	+	+	•	•	+	•	+	•	•	+	•
SEAM	+	+	+	+	•	•	+	•	+	+	•	•	•
SEGMENT	+	+	+	+	•	•	+	•	•	+	•	•	•
SEPRE / * ROSTRUM DIVIDERS	+	+	+	+	X	X	+	•	X	+	+	•	+
STRAIN EASY CHAIR	+	+	+	+	•	•	+	•	+	•	•	+	•
STRAIN LOW CHAIR	+	+	+	+	•	•	+	•	•	+	•	•	•
STRAIN & UNSTRAIN CHAIRS	+	+	+	+	+	•	+	•	•	+	•	•	•
UMOMOKU	X	X	X	X	X	X	X	X	X	X	X	X	X
UP-LIFT	+	+	+	+	•	•	+	•	•	•	•	•	•
TINKER	+	•	•	•	•	•	+	•	+	•	•	+	+
TOGGLE	+	+	+	+	•	•	+	•	+	+	•	•	•
TRIFIDAE	+	+	+	+	+	•	+	•	•	•	+	•	•
TRIFIDAE CHAIR & EASY CHAIR	+	+	+	+	+	•	+	•	•	•	+	•	•
CUSHIONS	+	+	+	+	+	•	+	+	+	•	•	+	+

Fabrics & Leathers Specifications

fabric	collection	specification	pilling	martindale cycles	light fastness	maintenance
200	CONTOUR	FABRIC 100% polyester	4-5	85.000	5-7	
200	CURA	FABRIC 98% post-consumer recycled polyester, 2% polyester	4-5	100.000	5-8	
200	GARC BIC	FABRIC 100% cotton	-	30.000	4-5	
300	ATLAS	FABRIC 90% new wool worsted, 10% nylon	4-5	100.000	6-7	
300	BOEMIAN	FABRIC 5% cotton, 13% linen, 25% viscose, 15% wool, 25% polyester, 15% polycarbonate, 2% polyamide	-	45.000	4-5	
300	CREPE	FABRIC 50% cotton, 33% viscose, 17% linen	3-4	35.000	4-5	
300	DUFFY	FABRIC 81% polyester, 19% cotton	4	100.000	6	
300	GORDON	FABRIC 31% viscose, 28% cotton, 20% wool, 10% polyamide, 6% polyester, 5% other	3-4	30.000	5	
300	HAKU	FABRIC 100% polyurethane, 100% polyester (backing)	5	100.000	7	
300	MYSTIC	FABRIC 100% polyester	5	150.000	4-5	
300	ORSETTO	FABRIC 34% viscose, 33% acrylic, 17% wool, 8% polyester, 4% flax, 4% cotton	5	80.000	4-5	
300	TUNDRA	FABRIC 42% viscose, 36% cotton, 16% acrylic, 6% polyester	3-4	30.000	5	
400	ARCO	FABRIC 95% virgin wool, 5% polyamide	4-5	70.000	5	
400	CREDO	FABRIC 95% virgin wool, 5% polyamide	4-5	100.000	5	
400	DIVINA 3	FABRIC 100% new wool	3	45.000	5-6	
400	DIVINA MD	FABRIC 100% new wool	3	45.000	5-6	
400	DIVINA MELANGE	FABRIC 100% new wool	3	45.000	6-7	
400	NOVUM	FABRIC 96% virgin wool, 4% polyamide	4-5	90.000	5-8	
400	PLANUM	FABRIC 44% new wool, 42% polyester, 14% nylon	4	100.000	5-6	
500	HALLINGDAL 65	FABRIC 70% new wool, 30% viscose	3-4	100.000	7	
500	MIZMAZE	FABRIC 60% polyester, 30% wool, 10% nylon	4	100.000	6	
500	MOSS	FABRIC 52% cotton, 22% viscose, 14% polyacrylic, 6% linen, 3% polyester 3% nylon	4-5	50.000	5-7	
500	STEELCUT TRIO 3	FABRIC 90% new wool worsted, 10% nylon	4	100.000	6-7	
600	UNIFORM MELANGE	FABRIC 68% wool, 22% polyamide, 10% polyester	4	100.000	6	
700	CODA 2	FABRIC 90% new wool, 10% nylon	4	100.000	6	
700	SISU	FABRIC 91% new Norwegian wool, 8% new New Zealand wool, 1% nylon	3-4	70.000	7	

leather	
80	CERVO
80	DIVINA
80	ELMOSADDLE
80	TUNDRA

collection	specification
LEATHER	aniline leather, slightly pigmented
LEATHER	aniline leather, organic pigment
LEATHER	aniline leather, organic pigment
LEATHER	aniline leather, organic pigment

indoor & outdoor fabric	
300	ACERO
300	APACHE
300	ERFOUD
300	PATIO
400	TAN TAN
400	ZAGORA
600	ROCOCÒ
700	LIBERA

collection	specification	colour fastness uv outdoor	martin- dale cycles	colour fastness dry & wet friction	maintenance
OUTDOOR	100% solution dyed arcylic	-	40.000	7-8	
OUTDOOR	100% solution dyed arcylic	-	45.000	7-8	
OUTDOOR	100% solution dyed arcylic	-	50.000	7-8	
OUTDOOR	100% trevira CS	4-5	50.000	7	
OUTDOOR	100% solution dyed arcylic	-	50.000	7-8	
OUTDOOR	100% solution dyed arcylic	-	50.000	7-8	
OUTDOOR	97% polypropylene, 3% polyester	-	40.000	-	
OUTDOOR	100% polypropylene	-	40.000	-	

Do not wash in water

Wash in cold water

Hand wash only

Do not bleach

Bleach

Do not tumble dry

Tumble dry

Machine wash at 30°C max

Machine wash at 30°C max, mild process

Machine wash at 30°C max, very mild process

Machine wash at 40°C max

Dry clean

Do not dry clean

Do not centrifuge

To iron use cool setting (max 110°C)

To iron use medium setting (max 150°C)

To iron use hot setting (max 200°C)

Do not iron

Iron on reverse side

Dry clean using perchloroethylene only

Dry clean with perchloroethylene, use precautions

Category 200

Contour

collection: Fabric
composition: 100% polyester
width: 140 cm +/- 2 cm
piling: 4-5
abrasion resistance: 85,000 cycles
light fastness: 5-7
rubbing fastness: 4-5 dry and wet



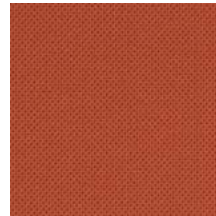
61138



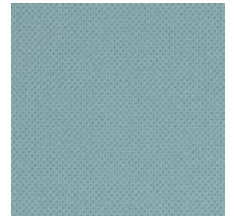
61215



62041



61216



66213



67033



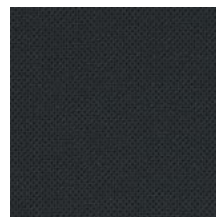
68238



68239



60003

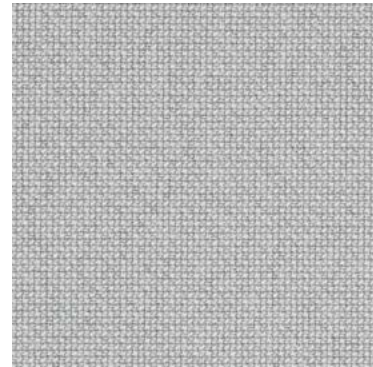


68130

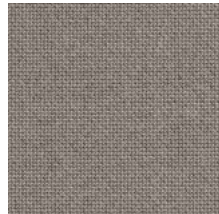
Category 200

Cura

collection: Fabric
composition: 98% post-consumer recycled polyester / 2% polyester
width: 140 cm +/- 2 cm
piling: 4-5
abrasion resistance: 100.000 cycles
light fastness: 5-8
rubbing fastness: 4-5 dry and wet



60000



61168



61259



61169



62083



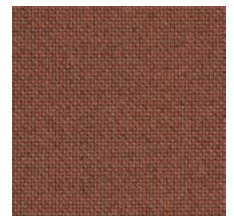
62084



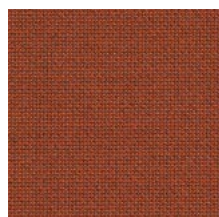
62082



61260



61257



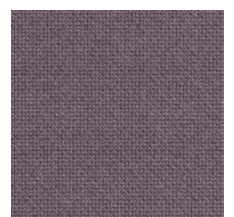
63078



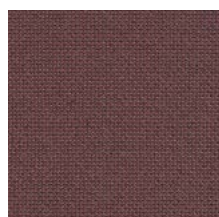
63012



64013



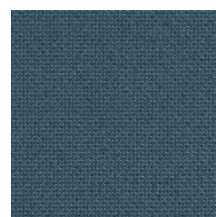
64194



64195



65137



66167



66166

Category 200

Cura



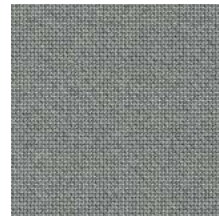
66170



68187



68264



60112



60110



60109



60019

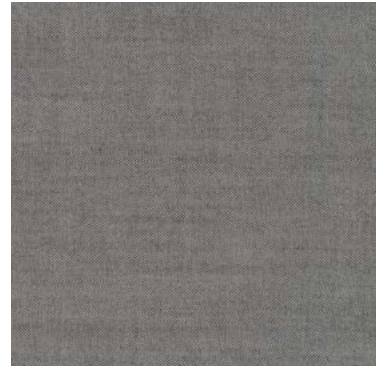


60999

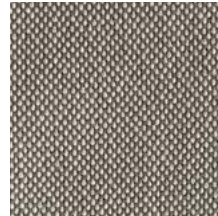
Category 200

Garc Bic

collection: Fabric
composition: 100% cotton
width: 140 cm +/- 3 cm
abrasion resistance: 30.000 cycles
light fastness: class 4-5



111



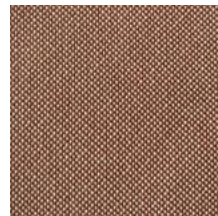
230



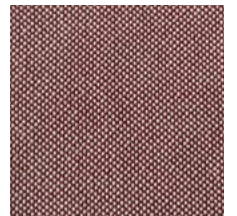
420



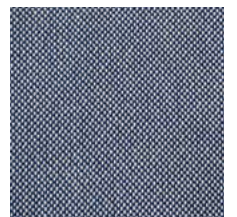
236



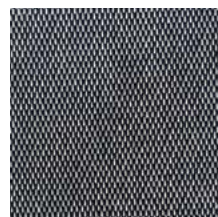
232



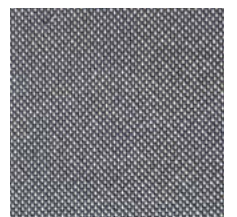
234



238



421



422

Category 300

Atlas

collection: Fabric
composition: 90% new wool worsted,
10% nylon
width: 150 cm +/- 2 cm
piling: 4-5
abrasion resistance: 100.000 cycles
light fastness: class 6-7
rubbing fastness: 4-5 dry and wet



461



561



501



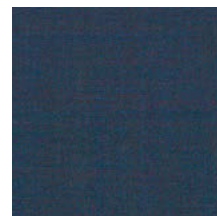
621



681



641



861



961



981



111

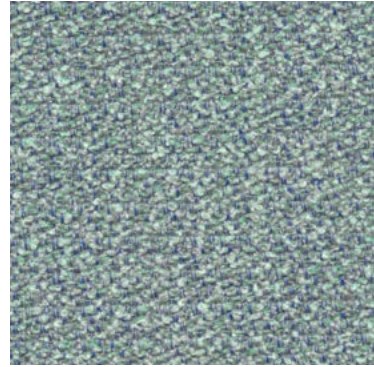


161

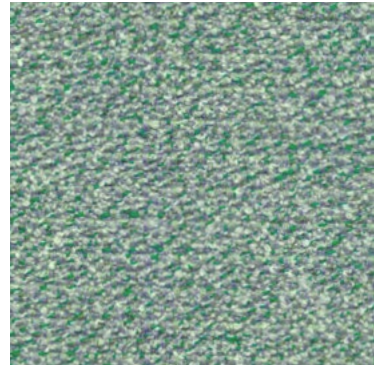
Category 300

Boemian

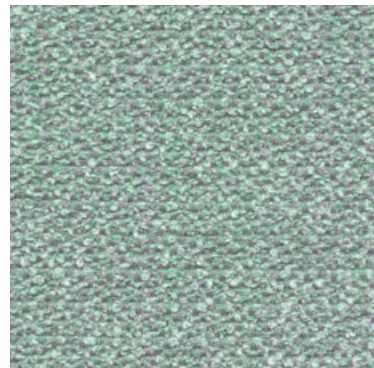
collection: Fabric
composition: 5% cotton, 13% linen,
25% viscose, 15% wool, 25% PL, 15% PC, 2% PA
width: 137 cm +/- 3 %
abrasion resistance: 45.000 cycles
light fastness: class 4-5



040



031

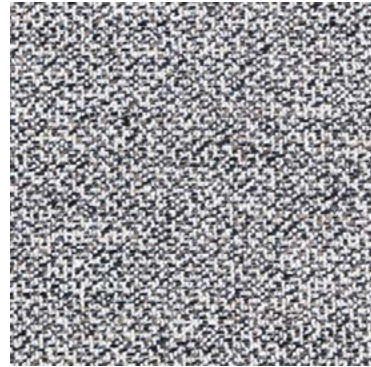


030

Category 300

Crepe

collection: Fabric
composition: 50% cotton, 33% viscose,
17% linen
width: 140 +/- 3 %
piling: 3-4
abrasion resistance: 35.000 cycles
light fastness: class 4-5



034



039



103

Category 300

Duffy

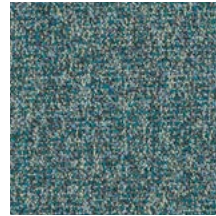
collection: Fabric
composition: 81% Polyester, 19% Cotton
width: 140 cm +/-2%
piling: 4
abrasion resistance: 100.000 cycles
light fastness: class 6



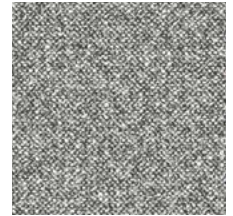
009



007



041



018



023

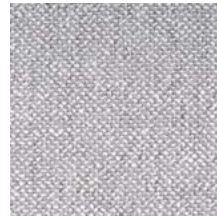
Category 300

Gordon

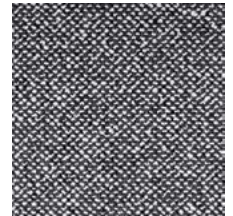
collection: Fabric
composition: 31% viscose, 28% cotton, 20% wool,
10% polyamide 6% polyester 5% other
width: 140 cm +/- 2 cm
piling: 3-4
abrasion resistance: 30.000 cycles
light fastness: class 5
rubbing fastness: 4-5 wet and dry



03/1



90/1



98/2

Category 300

Haku

collection: Fabric
composition: 100% polyurethane, 100% polyester
on the backside
width: approx 140 cm
piling: 4
abrasion resistance: 100.000 cycles
light fastness: class 7
rubbing fastness: 4-5 dry and wet
manufacturer warranty: 10 years



221



321



351



961



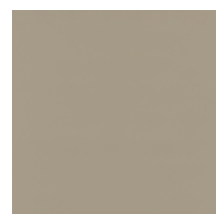
941



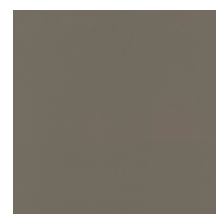
871



981



241



281



191

Category 300

Mystic

collection: Fabric
composition: 100% polyester
width: 140 cm
piling: 5
abrasion resistance: 150.000 cycles
light fastness: class 4-5



01



032



012



105



062



056



311



395



069



214

Category 300

Orsetto

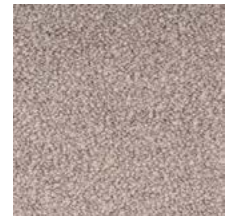
collection: Fabric
composition: 34% viscose, 33% acrylic,
17% wool, 8% polyester, 4% flax, 4% cotton
width: 138-140 cm
piling: 5
abrasion resistance: 80.000 cycles
light fastness: class 5
rubbing fastness: 5 dry, 3-4 wet



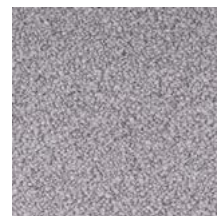
01/1



01/2



05/10



02/22

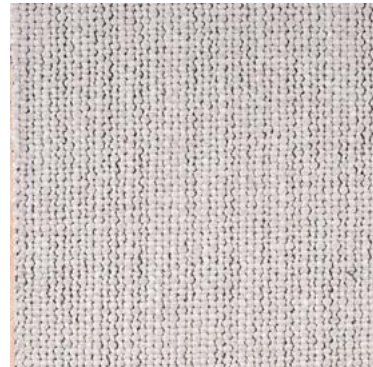


98/21

Category 300

Tundra

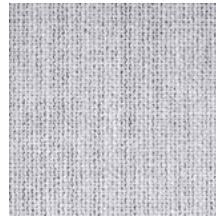
collection: Fabric
composition: 42% viscose, 36% cotton
16% acrylic, 6% polyester
width: approx 140 cm
piling: 3-4
abrasion resistance: 30.000 cycles
light fastness: class 5
rubbing fastness: 4-5 wet and dry



003



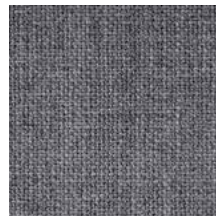
004



008



010



011

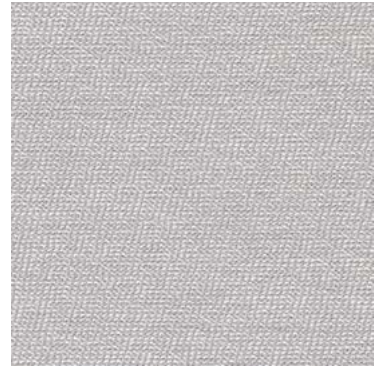


012

Category 400

Arco

collection: Fabric
composition: 95% WV 5% PA
width: 140 cm
piling: 4-5
abrasion resistance: 70.000 cycles
light fastness: class 5
rubbing fastness: 4-5 dry and wet



arctic



corn



jade



safran



vivid



breeze



samba



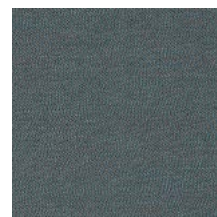
azur



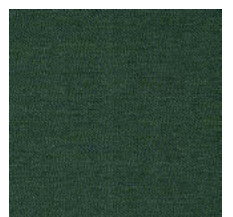
mare



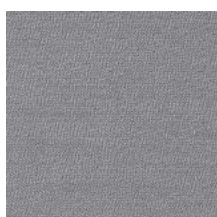
aqua



pond



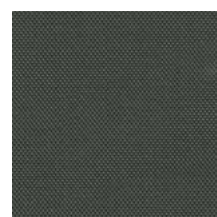
forest



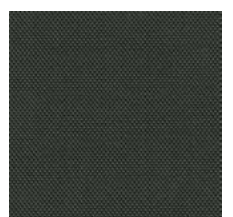
fels



kies



carbon

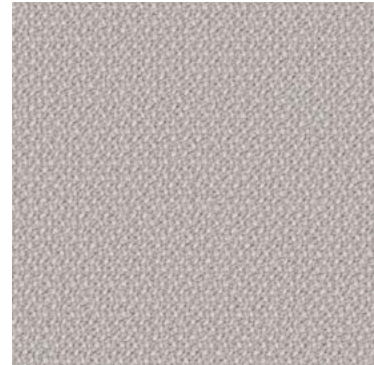


lanoso

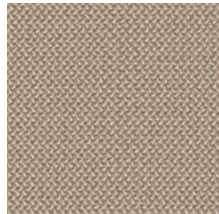
Category 400

Credo

collection: Fabric
composition: 95% wV, 5% PA
width: 140 cm
piling: 4-5
abrasion resistance: 100.000 cycles
light fastness: class 5



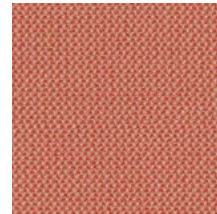
calla



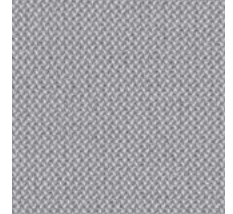
macadamia



aureo



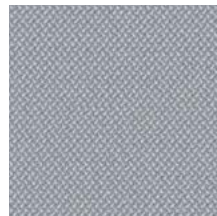
grapefruit



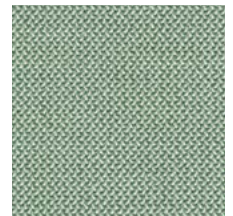
chalk



zinn



diamond



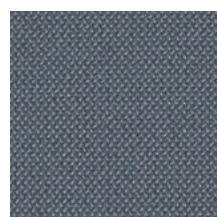
aloe



lake



jaspis



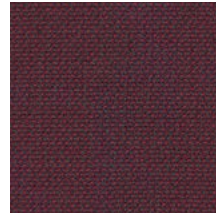
sea



navy

Category 400

Credo



rubin



carbon



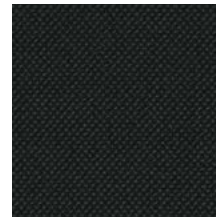
fango



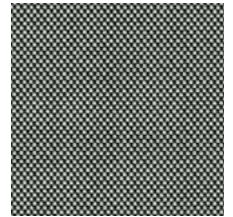
schiefer



asphalt



black

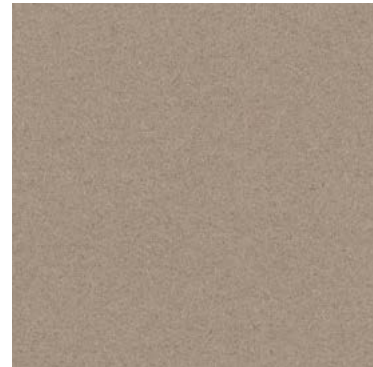


pepper

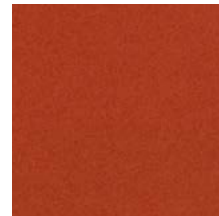
Category 400

Divina 3

collection: Fabric
composition: 100% new wool
width: 150 cm
piling: 3
abrasion resistance: 45.000 cycles
light fastness: class 5-6
rubbing fastness: 4-5 dry, 3-5 wet
manufacturer warranty: 10 years



224



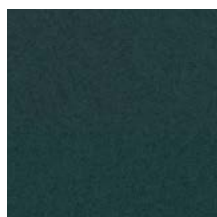
552



584



893



886



944



173



191

Category 400

Divina MD

collection: Fabric
composition: 100% new wool
width: 150 cm
piling: 3
abrasion resistance: 45.000 cycles
light fastness: class 5-6
rubbing fastness: 4-5 dry, 3-5 wet
manufacturer warranty: 10 years



873



973

Category 400

Divina Melange 3

collection: Fabric
composition: 100% new wool
width: 150 cm
piling: 3
abrasion resistance: 45.000 cycles
light fastness: class 6-7
rubbing fastness: 4-5 dry, 3-5 wet
manufacturer warranty: 10 years



227



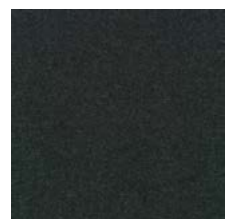
581



147



170

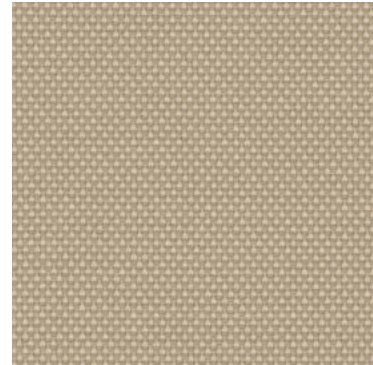


180

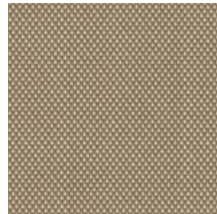
Category 400

Novum

collection: Fabric
composition: 96% virgin wool, 4 % polyamide
width: 150 cm +/- 2 cm
piling: 4-5
abrasion resistance: 90.000 cycles
light fastness: class 5-8
rubbing fastness: 4-5 dry and wet



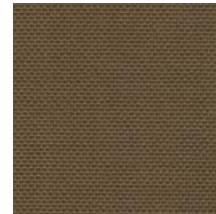
angora



cocos



paradise



cacao



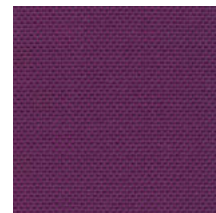
curry



coral



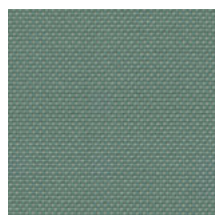
heart



viola



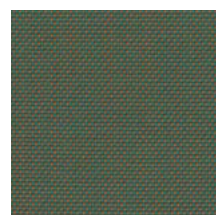
prune



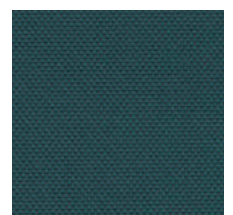
lagoon



delphi



mambo



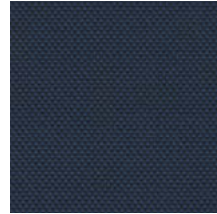
samoa

Category 400

Novum



blues



amur



moss



pinie



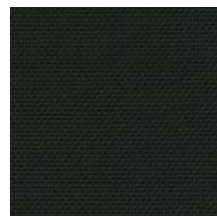
kies



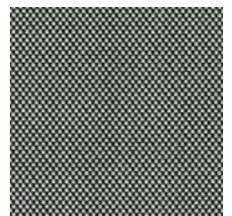
carbon



lanoso



ebony

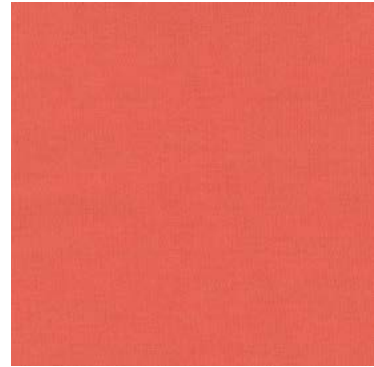


pepper

Category 400

Planum

collection: Fabric
composition: 44% new wool, 42% polyester,
14% nylon
width: 160 cm
piling: 4
abrasion resistance: 100.000 cycles
light fastness: class 5-6
rubbing fastness: 4-5 dry and wet
manufacturer warranty: 5 years



521



351



571



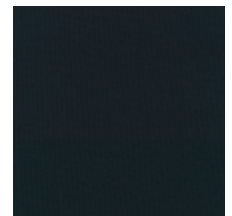
741



141



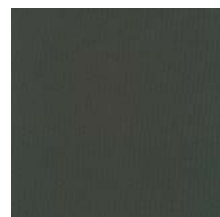
921



791



941



971

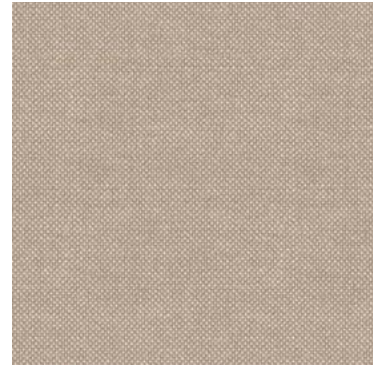


271

Category 500

Hallingdal 65

collection: Fabric
composition: 70% new wool, 30% viscose
width: 130 cm
piling: 3-4
abrasion resistance: 100.000 cycles
light fastness: class 7
rubbing fastness: 4-5 dry, 3-5 wet
manufacturer warranty: 10 years



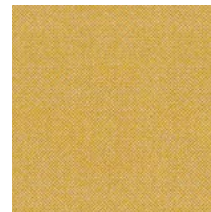
200



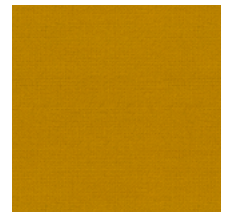
220



350



407



457



590



674



657



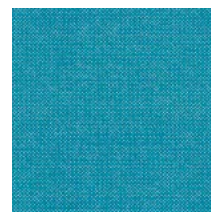
687



573



763



840



850



810



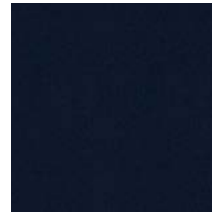
754

Category 500

Hallingdal 65



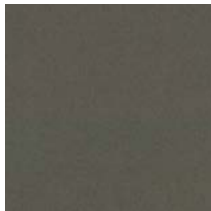
733



764



890



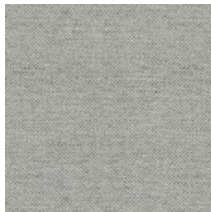
944



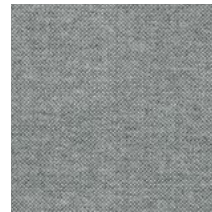
980



960



110



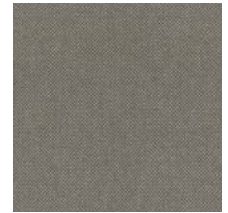
116



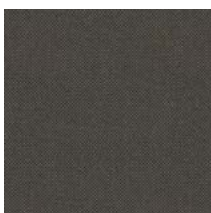
130



166



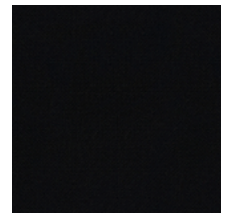
123



153



173



190

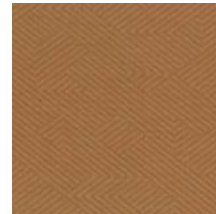
Category 500

Mizmaze

collection: Fabric
composition: 60% polyester, 30% wool,
10% nylon
width: 163 cm
piling: 4
abrasion resistance: 100.000 cycles
light fastness: class 6
rubbing fastness: 4 dry, 4-5 wet
manufacturer warranty: 10 years



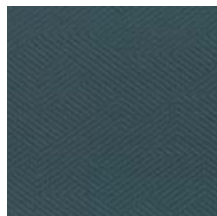
212



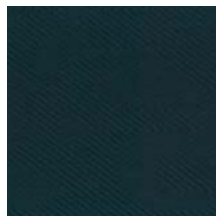
322



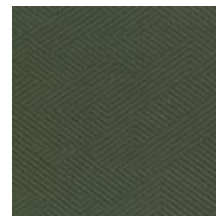
562



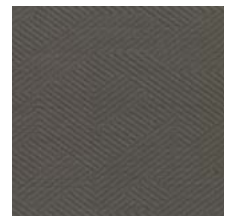
762



882



962



252



392

Category 500

Moss

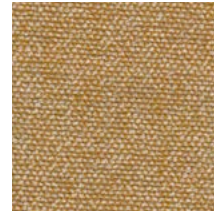
collection: Fabric
composition: 52% cotton, 22% viscose
14% polyacrylic, 6% linen, 3% polyester, 3% nylon
width: 138 cm
piling: 4-5
abrasion resistance: 50.000 cycles
light fastness: class 5-7
rubbing fastness: 4-5 dry and wet
manufacturer warranty: 2 years



011



005



021



010



003



006



015



002

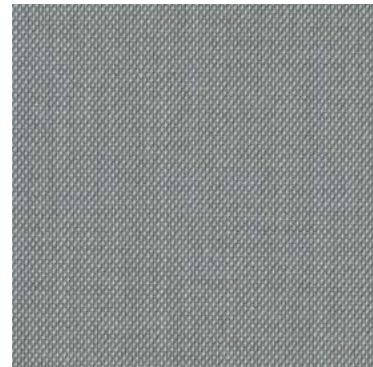


001

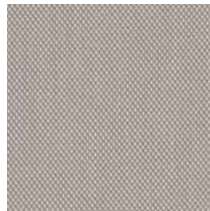
Category 500

Steelcut Trio 3

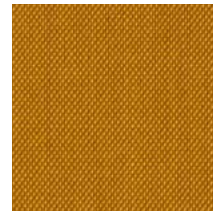
collection: Fabric
composition: 90% new wool worsted, 10% nylon
width: approx 140 cm
piling: 4
abrasion resistance: 100.000 cycles
light fastness: class 6-7
rubbing fastness: 4-5 dry and 3-5 wet
manufacturer warranty: 10 years



113



205



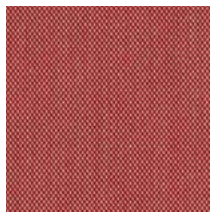
453



576



533



636



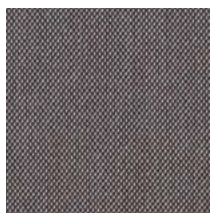
686



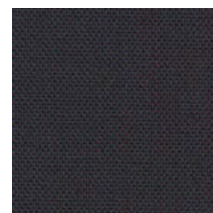
645



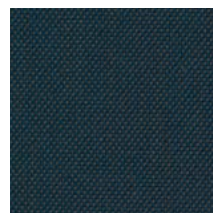
806



336



776



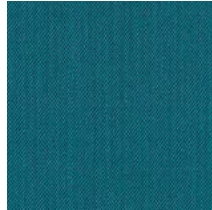
756



883

Category 500

Steelcut Trio 3



983



946



966



996



246



266



153

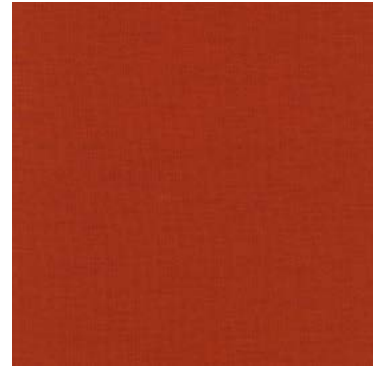


176

Category 600

Uniform Melange

collection: Fabric
composition: 68% new wool, 22% nylon,
10% polyester
width: 165 cm
piling: 4
abrasion resistance: 80.000 cycles
light fastness: class 6
rubbing fastness: 4-5 dry and wet
manufacturer warranty: 5 years



553



363

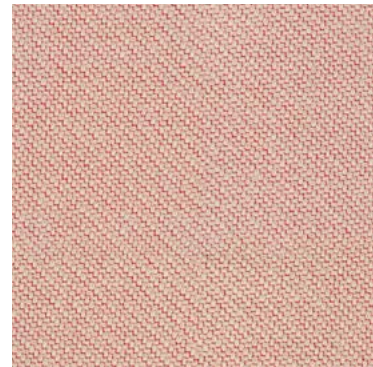


933

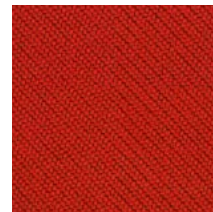
Category 700

Coda 2

collection: Fabric
composition: 90% wool, 10% nylon
width: 140 cm
piling: 4
abrasion resistance: 100.000 cycles
light fastness: class 6
rubbing fastness: 4-5 dry and 4 wet
manufacturer warranty: 10 years



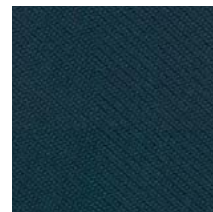
116



610



962



762



182

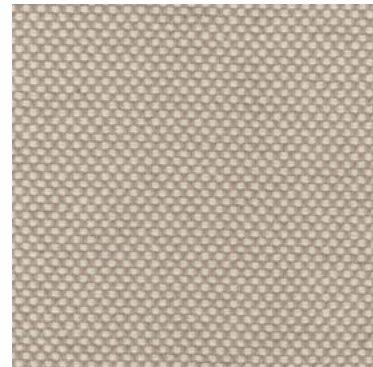


100

Category 700

Sisu

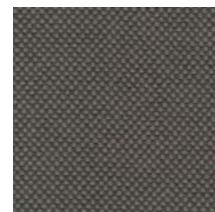
collection: Fabric
composition: 91% new Norwegian wool,
8% new New Zealand wool, 1% nylon
width: approx 142 cm
piling: 3-4
abrasion resistance: 70.000 cycles
light fastness: class 7
rubbing fastness: 4-5 dry and wet
manufacturer warranty: 10 years



105



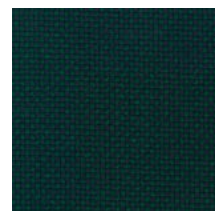
125



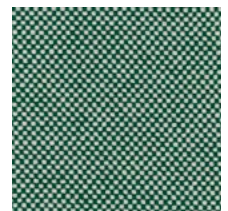
175



195



885



805



405



165

Category 80

Cervo

collection: Leather
origin: scandinavian bullhides
thickness: 1.5 - 1.7 mm
light fastness: 4
surface: aniline – slightly pigmented



354



358



360



359



150



357

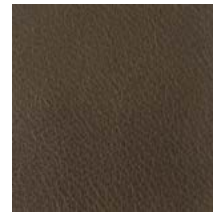
Category 80

Divina

collection: Leather
origin: scandinavian bullhides
thickness: 1.2 - 1.4 mm
surface: pigmented nappa with fine grain structure



cognac



pietra



deserto



antracite



muschio



caramello

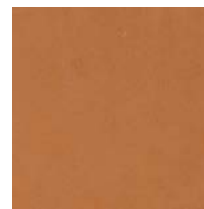
Category 80

Elmosaddle

collection: Leather
origin: grain leather from Scandinavian cattle
thickness: 1.0 - 1.2 mm
light fastness: 3
rubbing fastness: wet 80/4, dry 2000/4
surface: aniline, full grain



12129



43131



48017



99115

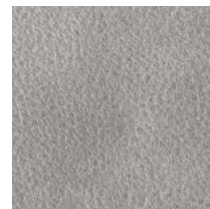
Category 80

Tundra

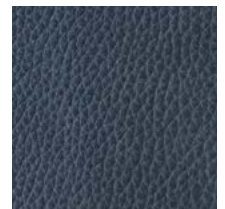
collection: Leather
origin: south german bullhides
thickness: 2.0 - 2.2 mm
light fastness: 3
rubbing fastness: dry and wet 3
surface: aniline



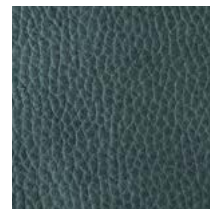
600 choco



603 taupe



604 basalt



606 dark olive



602 sahara

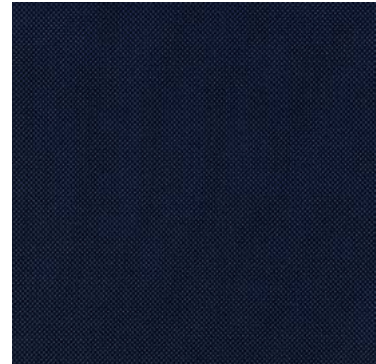


601 cognac

Category 300

Acero

collection: Outdoor
composition: 100% solution dyed acrylic
width: 140 cm
abrasion resistance: 40.000 cycles
light fastness: class 7-8
rubbing fastness: 5 dry and wet



9287



15102

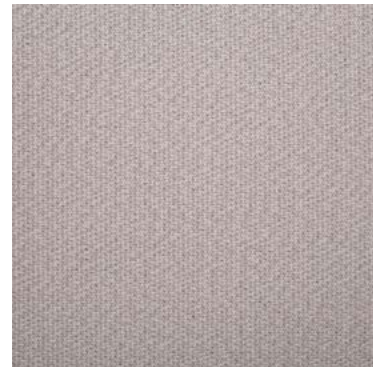


793079

Category 300

Apache

collection: Outdoor
composition: 100% solution dyed acrylic
width: 140 cm
abrasion resistance: 45,000 cycles
light fastness: class 7-8
rubbing fastness: 5 dry and wet



002



004



008



010



011



014



015

Category 300

Erfoud

collection: Outdoor
composition: 100% solution dyed acrylic
width: 140 cm
abrasion resistance: 50.000 cycles
light fastness: class 7-8
rubbing fastness: 5 dry and wet



79



71



81



2010



130



150



16020



82



8715



7587



92693



180



72

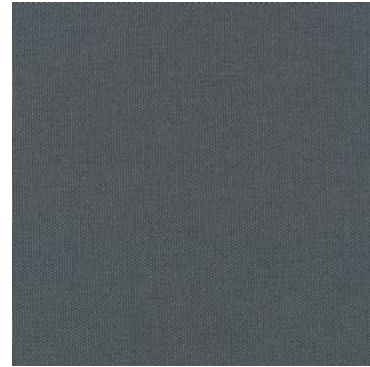


102

Category 300

Patio

collection: Outdoor
composition: 100% Trevira CS
width: Approx. 140 cm
piling: 4-5 (ISO 1-5)
abrasion resistance: 50.000 cycles
light fastness: class 7
rubbing fastness: 4-5 dry and wet
manufacturer guarantee: 10 years
sustainability: Greenguard Gold, HPD, EPD



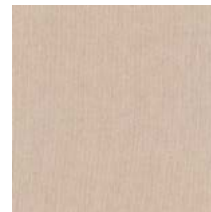
0170



0220



0340



0430



0780

Category 400

Tan tan

collection: Outdoor
composition: 100% solution dyed acrylic
width: 140 cm
abrasion resistance: 50.000 cycles
light fastness: class 7-8
rubbing fastness: 5 dry and wet



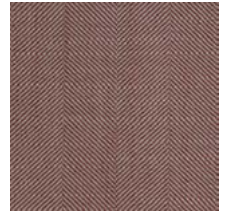
7587



8182



9479



13093

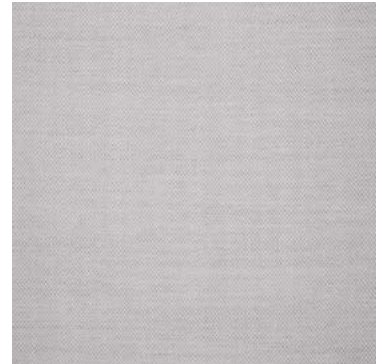


92693

Category 400

Zagora

collection: Outdoor
composition: 100% solution dyed acrylic
width: 140 cm
abrasion resistance: 50.000 cycles
light fastness: class 7-8
rubbing fastness: 5 dry and wet



2010



8271



8281



20160



92693

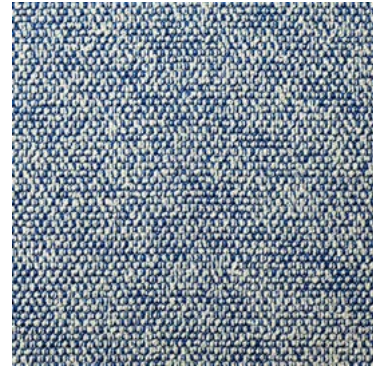


170150

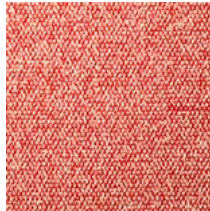
Category 600

Rococò

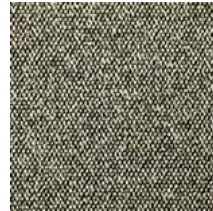
collection: Outdoor
composition: 97% PP, 3% PES
width: 137 cm
abrasion resistance: 40.000 cycles



navy



**rouge
mariniere**



sale pepe

Category 700

Libera

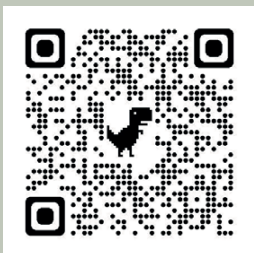
collection: Outdoor
composition: 100% PP
width: 134 cm
abrasion resistance: 40.000 cycles



Rice 001

EPOXIA

6 avenue Charles de Gaulle
78150 Le Chesnay
+33 1 39 66 00 77
contact@epoxia.com
www.epoxia.com



Rejoignez-nous sur nos réseaux sociaux

