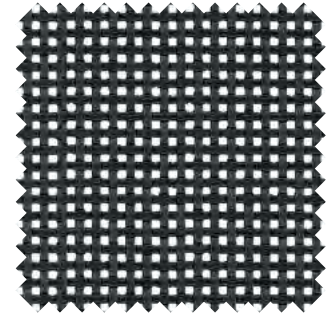


## MESH

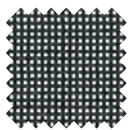
Tissu à haute valeur esthétique pour le design et le confort. Excellente stabilité dimensionnelle et résistance exceptionnelle aux conditions extérieures. Résistance à la déchirure extrême. Séchage rapide grâce à la construction ouverte



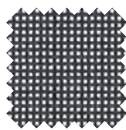
### Specifications

- **Category N**
- **Composition** | 100% polyester
- **Weight** | 500 g/lm
- **Width** | 180 cm
- **Abrasion** | Martindale 120.000 turns EN ISO 12947-2
- **Pilling** | n/a
- **Light fastness** | Grade 4-5 EN ASTM G154
- **Rubbing fastness** | n/a
- **Tensile strength** | 240/240 daN/5 cm EN ISO 1421
- **Flammability\*** | CA TB 117; DIN 4102-1 B1; EN 13501-1 B-s2,d0; NFP 92-507 M2
- **Environment** | 100% recyclable polyester
- **Labelling** | Phthalate Free
- **Maintenance** | For normal cleaning, dust mesh with vacuum cleaner or with a soft brush. In case of stains, wash with a soft brush or with a sponge using a solution of water and detergent, rinse a lot with water and let the mesh dry in open air.
- **Colours availability** | 5 standard colours - 33 total colours

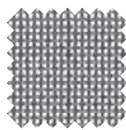
### Colour scale



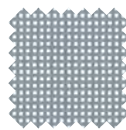
03N | Black



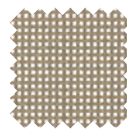
04N | Graphite



01N | Silver\*



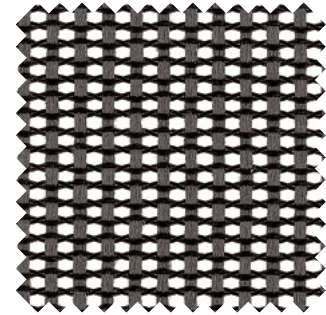
06N | Grey



07N | Beige

## ELASTIC MESH

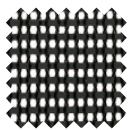
Lorsqu'il est étiré, ce matériau donne d'excellentes propriétés de charge et de résilience.



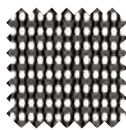
### Specifications

- **Category X**
- **Composition** | 70% polyester elastomer / 30% polyester yarns
- **Weight** | n/a
- **Width** | 150 cm
- **Abrasion** | Double Rubs Wyzenbeek 50.000 turns ASTM D4157-07; Passed 50.000 cycles ASTM D 3597-95A sec. 7.4
- **Pilling** | Grade 5 ASTM D3511-82
- **Light fastness** | Grade 5 AATCC 16
- **Rubbing fastness** | Grade 5/4-5 (wet/dry) AATCC 8 or 116
- **Breaking strength** | 406.7/233.0 (Warp/Fill) ASTM D 5034-95
- **Flammability** | BS 5852 Part 1 0-1 Cigarette & match; CA TB 117-2013
- **Environment** | 100% recyclable polyester
- **Labelling** | n/a
- **Maintenance** | For normal cleaning, dust mesh with vacuum cleaner or with a soft brush. In case of stains, wash with a soft brush or with a sponge using a solution of water and detergent, rinse a lot with water and let the mesh dry in open air.
- **Colours availability** | 7 standard colours - 10 total colours

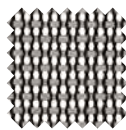
### Colour scale



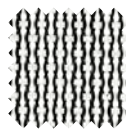
01 | Nero



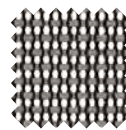
20 | Graphite



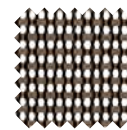
21 | Light grey



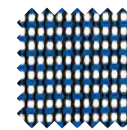
24 | White black



55 | Turtle dove



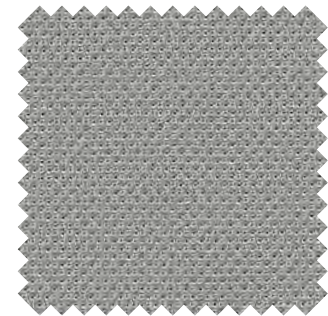
50 | Greige



11 | Blue

## ATLANTIC

Atlantic est conçu avec une structure simple et légère et un effet de relief discret, qui ajoute du jeu et de la profondeur à la surface et à la couleur. C'est un tissu de base solide avec des valeurs visuelles allant du calme au look frais et sportif.



### Specifications

- **Category B**
- **Composition** | 100% polyester
- **Weight** | 530 g/lm
- **Width** | 150 cm
- **Abrasion** | Martindale 110.000 turns EN ISO 12947-2; Double Rubs Wyzenbeek 100.000 turns ASTM D4157-07
- **Pilling** | Grade 4-5 EN ISO 12945-2; Grade 5 ASTM D3511
- **Light fastness** | Grade 5-7 EN ISO 105-B02; Grade 4-5 AATCC 16
- **Rubbing fastness** | Grade 4-5/4-5 (wet/dry) EN ISO 105x12; Grade 4-5/4-5 (wet/dry) AATCC 8 or 116
- **Flammability** | ASTM E 84 Class I; CA TB 117-2013 BS EN 1021-2 Match; BS EN 1021-1 Cigarette; ÖNORM B 3825-B1-3800-Q1 UK
- **Environment** | 100% recyclable polyester
- **Labelling** | STANDARD 100 by OEKO-TEX®, EU Ecolabel®
- **Maintenance** | For normal maintenance and cleaning, use often the vacuum cleaner with appropriate part for fabric, and if necessary, cover the part with a soft cloth. For a deeper cleaning use a dry detergent for fabrics. Do not use anything petroleum based.
- **Colours availability** | 10 standard colours - 57 total colours

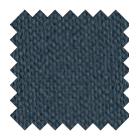
### Colour scale



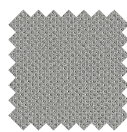
433 | Black



434 | Dark grey



455 | Azure Grey



435 | Grey



438 | Orange



439 | Red



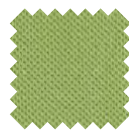
457 | Deep blue



441 | Dark green



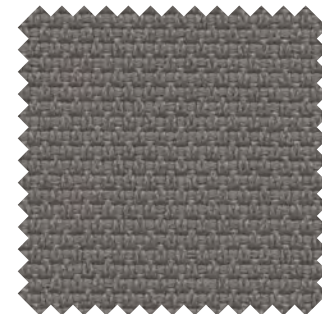
436 | Petroleum blue



437 | Green

## MINI

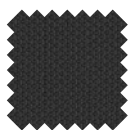
Mini est un tissu élastique en trois dimensions fabriqué avec le fil ininflammable Trevira CS



### Specifications

- **Category B**
- **Composition** | 100% Trevira CS
- **Weight** | 480 g/lm - 340 gr/m<sup>2</sup>
- **Width** | 140 cm
- **Abrasion** | Martindale 100.000 turns EN ISO 12947-2
- **Pilling** | Grade 4-5 EN ISO 12945-2
- **Light fastness** | Grade 5-8 EN ISO 105-B02
- **Rubbing fastness** | Grade 4-5 EN ISO 105x12
- **Flammability** | UNI 9174 - 8456 Class C1; UNI 9175 Class 1 IM; DIN 4102 Class B1; NF 92501-7 Class M1; NF D 60013 Class AM18; EN 1021-1 & 2; BS Crib 5; BS 7176 Class Medium Hazard; EN 13773 Class 1; OENORM 3800-1 Class B1,Q1,TR1; California TB117; USA NFPA 701; USA NFPA 260; IMO Part 8 Upholstery
- **Environment** | 100% recyclable polyester
- **Labelling** | STANDARD 100 by OEKO-TEX®, EU Ecolabel®, Trevira CS®
- **Maintenance** | Brush any substantial, encrusted marks by hand, using a brush or spatula, then vacuum clean. Pre-clean with a neutral universal agent (incl. Possibility dry foam as well). After each cleaning remove any residual surfactant, using spray extraction.
- **Colours availability** | 7 standard colours - 51 total colours

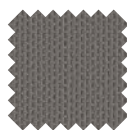
### Colour scale



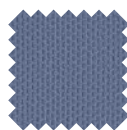
28A | Black



28F | Dark grey



28E | Grey



28C | Light blue



28D | Green



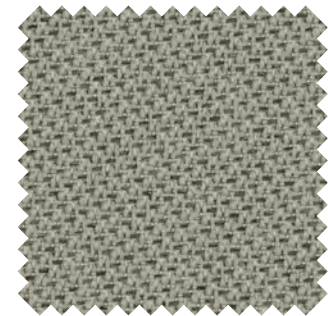
28H | Cadmium yellow



28B | Red

## TONAL

Tonal est un tissu bicolore chiné. Des lignes distinctes traversent la surface dans plusieurs directions et créent un look dynamique, vivant et vibrant. La fusion des tons clairs et sombres ajoute de la profondeur et crée un effet presque tridimensionnel.



### Specifications

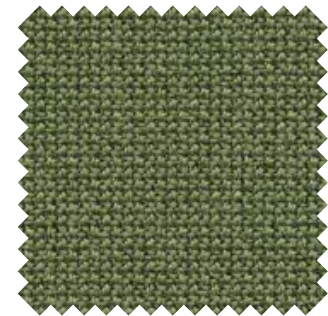
- **Category B**
- **Composition** | 99% post-consumer recycled polyester / 1% polyester
- **Weight** | 315 g/lm
- **Width** | 140 cm
- **Abrasion** | Martindale 100.000 turns UNI EN ISO 12947/2, Double Rubs Wyzenbeek 100.000 turns (ASTM D4157) (heavy duty upholstery)
- **Pilling** | Grade 4-5 EN ISO 12945-2; Grade 4.5 ASTM D3511/ACT
- **Light fastness** | Grade 5-8 EN ISO 105-B02; Grade 4.5 AATCC 16
- **Rubbing fastness** | Grade 5/4-5 (bagnato/asciutto) EN ISO 105x12, Grade 5 BS EN ISO 105-X12
- **Flammability** | CA TB 117-2013, ASTM E 84 Class I, BS EN 1021 1&2 Cigarette and Match, BS EN 1021-1 Cigarette, BS 476 Part 7 class I, DIN EN 13501-1 B-s1,d0(glued)
- **Environment** | 99% post-consumer recycled polyester; 100% recyclable polyester
- **Labelling** | STANDARD 100 OEKO-TEX®, EU Ecolabel®
- **Maintenance** | For normal maintenance and cleaning, use often the vacuum cleaner with appropriate part for fabric, and if necessary, cover the part with a soft cloth. For a deeper cleaning use a dry detergent for fabrics. Do not use anything petroleum based.
- **Colours availability** | 15 standard colours - 30 total colours

### Colour scale



## CURA

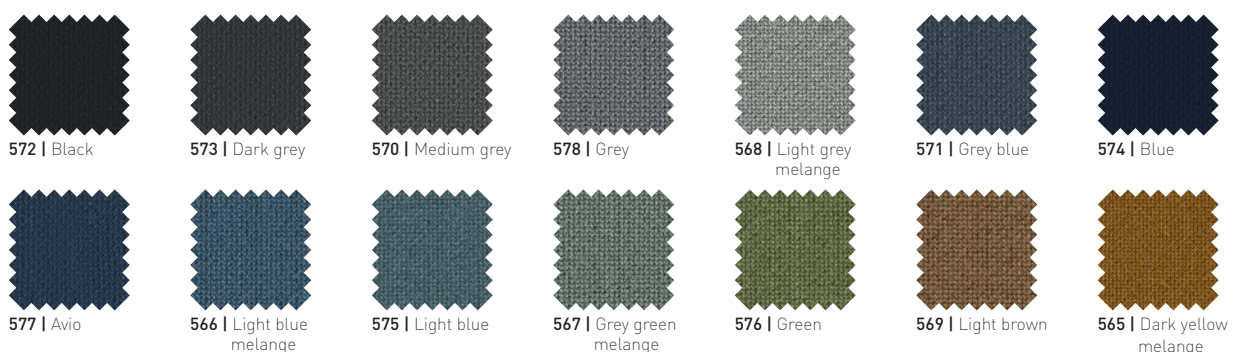
Cura est un tissu d'ameublement bicolore polyvalent fabriqué à 98 % de polyester recyclé. Utilisez Cura pour les meubles de bureau ou les sièges de salon pour transformer les objets en intérieurs accueillants.



### Specifications

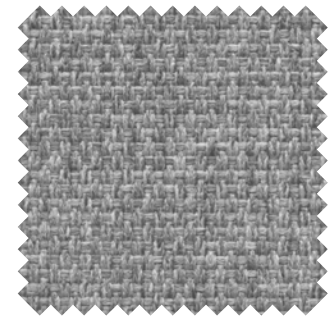
- **Category C**
- **Composition** | 98% post-consumer recycle polyester / 2% polyester
- **Weight** | 420 g/lm
- **Width** | 140 cm
- **Abrasion** | Martindale 100.000 turns EN ISO 12947-2; Double Rubs Wyzenbeek 100.000 turns ASTM D4157-07
- **Pilling** | Grade 4-5 EN ISO 12945-2; Grade 5 ASTM D3511
- **Light fastness** | Grade 5-8 EN ISO 105-B02; Grade 5 AATCC 16
- **Rubbing fastness** | Grade 4-5/4-5 (wet/dry) EN ISO 105x12; Grade 5/5 (wet/dry) AATCC 8 or 16
- **Flammability** | BS EN 1021 1&2 Cigarette and match; BS 5852 Part 1 0-1 Cigarette&match; CA TB 117-2013
- **Environment** | 98% recycled post-consumer polyester; 100% recyclable polyester
- **Labelling** | STANDARD 100 by OEKO-TEX®, EU Ecolabel®
- **Maintenance** | For normal maintenance and cleaning, use often the vacuum cleaner with appropriate part for fabric, and if necessary, cover the part with a soft cloth. For a deeper cleaning use a dry detergent for fabrics. Do not use anything petroleum based.
- **Colours availability** | 14 standard colours - 50 total colours

### Colour scale



## MINI MELANGE

Mini Melange est un tissu élastique en trois dimensions à deux nuances fabriqué avec le fil ininflammable Trevira CS.



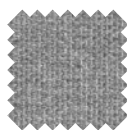
### Specifications

- **Category C**
- **Composition** | 100% Trevira CS
- **Weight** | 480 g/lm - 340 gr/m<sup>2</sup>
- **Width** | 140 cm
- **Abrasion** | Martindale 100.000 turns EN ISO 12947-2;
- **Pilling** | Grade 4-5 EN ISO 12945-2
- **Light fastness** | Grade 5-8 EN ISO 105-B02
- **Rubbing fastness** | Grade 4-5 EN ISO 105x12
- **Flammability** | UNI 9174 - 8456 Class C1; UNI 9175 Class 1 IM; DIN 4102 Class B1; NF 92501-7 Class M1; NF D 60013 Class AM18; EN 1021-1 & 2; BS Crib 5; BS 7176 Class Medium Hazard; EN 13773 Class 1; OENORM 3800-1 Class B1,Q1,TR1; California TB117; USA NFPA 701; USA NFPA 260; IMO Part 8 Upholstery
- **Environment** | 100% recyclable polyester
- **Labelling** | STANDARD 100 by OEKO-TEX®, EU Ecolabel®, Trevira CS®
- **Maintenance** | Brush any substantial, encrusted marks by hand, using a brush or spatula, then vacuum clean. Pre-clean with a neutral universal agent (incl. Possibility dry foam as well). After each cleaning remove any residual surfactant, using spray extraction.
- **Colours availability** | 9 standard colours - 51 total colours

### Colour scale



26E | Dark grey



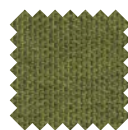
26A | Light grey



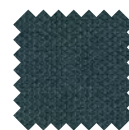
26F | Grey brown



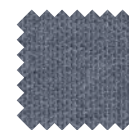
26G | Mustard yellow



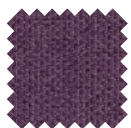
26D | Green



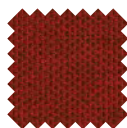
26L | Petroleum blue



26C | Light blue



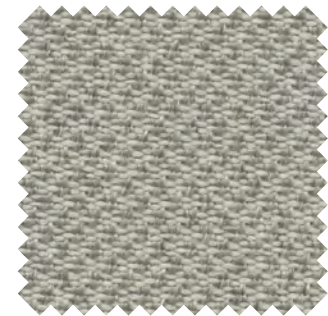
26M | Liliac



26B | Red

## SEALIFE

Tissu structuré en polyester recyclé certifié Seaqual, contenant du plastique marin recyclé récupéré des océans et des plages.



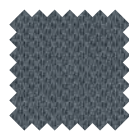
### Specifications

- **Category C**
- **Composition** | 100% recycled polyester
- **Weight** | 460 g/lm - 330 gr/m<sup>2</sup>
- **Width** | 140 cm
- **Abrasion** | Martindale 100.000 turns EN ISO 12947-2
- **Pilling** | Grade 4-5 EN ISO 12945-2
- **Light fastness** | Grade 5-8 EN ISO 105-B02
- **Rubbing fastness** | Grade 4-5 EN ISO 105x12
- **Flammability** | UNI 9175 Class 1 IM; EN 1021-1 & 2; BS 7176 Class Low Hazard; California TB 117-2013
- **Environment** | 100% recyclable polyester - SEAQUAL Certified
- **Labelling** | STANDARD 100 by OEKO-TEX®, Seaqual® Yarn, Global Recycled Standard
- **Maintenance** | For normal maintenance and cleaning, use often the vacuum cleaner with appropriate part for fabric, and if necessary, cover the part with a soft cloth. For a deeper cleaning use a dry detergent for fabrics. Do not use anything petroleum based.
- **Colours availability** | 11 standard colours - 30 total colours

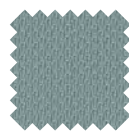
### Colour scale



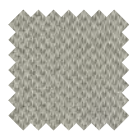
581 | Black



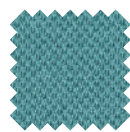
584 | Graphite



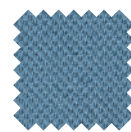
585 | Light grey



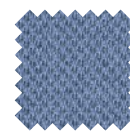
580 | Grey melange



588 | Light blue grey



579 | Light blue



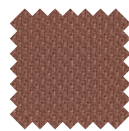
589 | Lavender



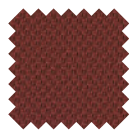
587 | Green



586 | Dark green



582 | Red coppery



583 | Red burgundy



## SOTEGA

Tissu d'ameublement de haute qualité avec une finition nappa douce et un grain de cuir classique. En raison de son aspect naturel et de son toucher, il est difficile de différencier ce matériau du cuir véritable.



### Specifications

- **Category C**
- **Composition** | 1% PU-finish / 73% PVC-compund / 26% CO-fabric
- **Weight** | 780 g/lm
- **Width** | 150 cm
- **Abrasion** | Martindale 50.000 turns EN ISO 5470-2
- **Pilling** | n/a
- **Light fastness** | Grade 5 EN ISO 105-B02
- **Rubbing fastness** | n/a
- **Flammability** | n/a
- **Environment** | No AZO, Ca, FCKW; No PCP, PCB, PCT; No CH2O Formaldehyde
- **Labelling** | n/a
- **Maintenance** | For durable joy please clean regularly. Clean with warm water or a mild soap sud and a micro-fibre cloth or a soft hand brush. Stain caused by oil, fat or ink must be removed immediately. Do not use solvents, chloride, abrasive, chemical cleaning agents or wax polishes.
- **Colours availability** | 10 standard colours - 25 total colours

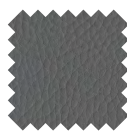
### Colour scale



501 | Black



502 | Anthracite



503 | Medium grey



505 | Light grey



507 | Dark brown



512 | Clay



511 | Cappucino



510 | Beige



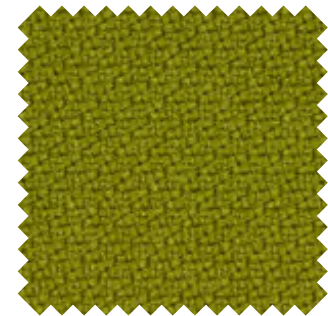
509 | White



506 | Cherry

## STEP

Step est unique en matière de texture et de performance. Avec sa surface délicate, Step est perçue comme vivante et intéressante.



### Specifications

- **Category C**
- **Composition** | 100% Trevira CS
- **Weight** | 470 g/lm
- **Width** | 140 cm
- **Abrasion** | Martindale 100.000 turns EN ISO 12947-2; Double Rubs Wyzenbeek 100.000 turns ASTM D4157-07
- **Pilling** | Grade 4-5 EN ISO 12945-2; Grade 4-5 ASTM D3511
- **Light fastness** | Grade 5-7 EN ISO 105-B02; Grade 4-5 AATCC 16
- **Rubbing fastness** | Grade 4-5/4-5 (wet/dry) EN ISO 105x12; Grade 4-5/4-5 (wet/dry) AATCC 8 or 116
- **Flammability** | AM 18 - NF D 60-013 (only for fabric); BS EN 1021-1 Cigarette; BS EN 1021 1&2 Cigarette and match; BS 5852 Part 1 0-1 Cigarette and match; BS 5852 Crib 5; BS 7176 Medium Hazard; CA TB 117-2013; DIN 4102 B1; DIN EN 13501-1 B-s1; FAR/JAR 25.853 (a) (i) (ii); IMO MSC 307(88) Annex 1 part 8; MED Certificate IMO; NFP 92-503/504/505 M1; ÖNORM B 3825-B1-3800-Q1 UK; UNI 9175 Class 1 | EMME
- **Environment** | n/a
- **Labelling** | STANDARD 100 by OEKO-TEX®, EU Ecolabel®, Trevira CS®
- **Maintenance** | First absorb as much of the liquid as possible with plain white kitchen paper towelling or a cloth. If the spot has dried, remove as much as possible by vacuuming. Rub gently with a clean white cloth. Press a dry tea towel or piece of plain white kitchen roll against the fabric each time liquid is added so that moisture and impurities are absorbed. Use pure water without soap for the last washing.
- **Colours availability** | 8 standard colours - 57 total colours

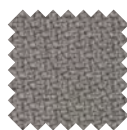
### Colour scale



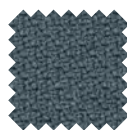
346 | Black



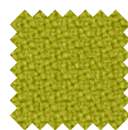
348 | Graphite



366 | Grey



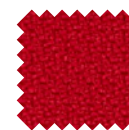
362 | Avio



357 | Green



358 | Orange

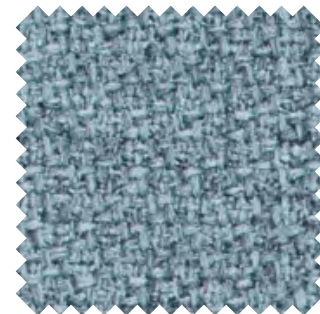


356 | Red



349 | Brick

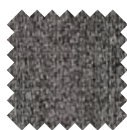
## STEP MELANGE



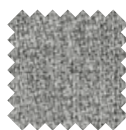
### Specifications

- **Category C**
- **Composition** | 100% Trevira CS
- **Weight** | 470 g/lm
- **Width** | 140 cm
- **Abrasion** | Martindale 100.000 turns EN ISO 12947-2; Double Rubs Wyzenbeek 100.000 turns ASTM D4157-07
- **Pilling** | Grade 4-5 EN ISO 12945-2; Grade 5 ASTM D3511
- **Light fastness** | Grade 5-7 EN ISO 105-B02; Grade 4-5 AATCC 16
- **Rubbing fastness** | Grade 4-5/4-5 (wet/dry) EN ISO 105x12; Grade 4-5/4-5 (wet/dry) AATCC 8 or 116
- **Flammability** | AM 18 - NF D 60-013 (only for fabric); BS EN 1021 1&2 Cigarette and match; BS EN 1021-1 Cigarette; BS 5852 Part 1 0-1 Cigarette and match; BS 5852 Crib 5; BS 7176 Medium Hazard; CA TB 117-2013; DIN 4102 B1; DIN EN 13501-1 B-s1; FAR/JAR 25.853 (a) (i) (ii); IMO MSC 307(88) Annex 1 part 8; MED Certificate IMO; ÖNORM B 3825-B1-3800-Q1 UK; UNI 9175 Class 1 | EMME
- **Environment** | n/a
- **Labelling** | STANDARD 100 by OEKO-TEX®, EU EcoLabel®, TREVIRA CS®
- **Maintenance** | First absorb as much of the liquid as possible with plain white kitchen paper towelling or a cloth. If the spot has dried, remove as much as possible by vacuuming. Rub gently with a clean white cloth. Press a dry tea towel or piece of plain white kitchen roll against the fabric each time liquid is added so that moisture and impurities are absorbed. Use pure water without soap for the last washing.
- **Colours availability** | 8 standard colours - 54 total colours

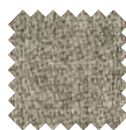
### Colour scale



30G | Dark grey



30C | Light grey



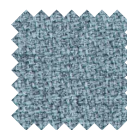
30E | Beige



30F | Clay



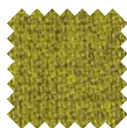
30D | Blue grey



30B | Azure



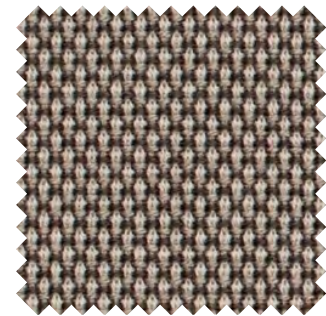
30L | Brick



30A | Green

## BREEZE FUSION

Breeze Fusion est un tissu d'ameublement en laine richement texturé, animé par des mélanges de couleurs. Il offre une durabilité supérieure, une résistance au feu inhérente et un profil environnemental solide.



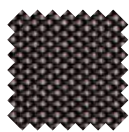
### Specifications

- **Category F**
- **Composition** | 88% New Zealand wool / 12% polyamide
- **Weight** | 590 g/lm
- **Width** | 140 cm
- **Abrasion** | Martindale 100.000 turns EN ISO 12947-2; Martindale 100.000 turns ASTM D4966-02
- **Pilling** | Grade 4-5 EN ISO 12945-2; Grade 5 ASTM D4970
- **Light fastness** | Grade 5-7 EN ISO 105-B02; Grade 5 AATCC 16
- **Rubbing fastness** | Grade 4-5/4-5 (wet/dry) EN ISO 105x12; Grade 4-5/4-5 (wet/dry) AATCC 8 or 116 crocking
- **Flammability** | BS EN 1021 1&2 Cigarette and match; BS 5852 Part 1 0-1 Cigarette & match; CA TB 117-2013 UNI 9175 Class 1 | EMME
- **Environment** | n/a
- **Labelling** | STANDARD 100 by OEKO-TEX®, EU Ecolabel®
- **Maintenance** | Wool is antistatic and does not attract dirt like other fabrics. Wool is also water repellent, so spillages are slow to penetrate the fabric. To maintain the beautiful colour and appearance of the fabric, we recommend gentle vacuuming, preferably every week, with a soft nozzle. Most stains and dirt can be removed using an ordinary pH-neutral detergent diluted in lukewarm water at normal strength.
- **Colours availability** | 5 standard colours - 44 total colours

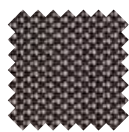
### Colour scale



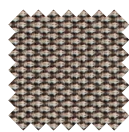
745 | Graphite black



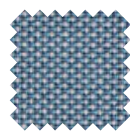
744 | Grey graphite



743 | Grey brown



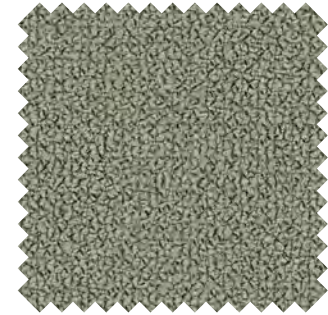
742 | Beige grey



746 | Grey azure

## GRAIN

Grain est un tissu polyester bouclé recyclé. Le tissu est conçu en deux versions qui se complètent de façon ludique. Choisissez entre une version solide et une version bicolore.



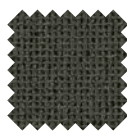
### Specifications

- **Category F**
- **Composition** | 92% post consumer recycled polyester / 8% polyester
- **Weight** | 615 g/lm
- **Width** | 140 cm
- **Abrasion** | Martindale 100.000 turns UNI EN ISO 12947/2, Double Rubs Wyzenbeek 100.000 turns (ASTM D4157) (heavy duty upholstery)
- **Pilling** | Grade 5 BS EN ISO 12947-2; Grade 5 ASTM D3511M-16
- **Light fastness** | Grade 5-7 EN ISO 105-B02; Grade 5 AATCC TM 16
- **Rubbing fastness** | Grade 4-5/4-5 (wet/dry) EN ISO 105x12; Grade 4-5/4-5 (wet/dry) AATCC 8
- **Flammability** | BS EN 1021 1&2 Cigarette and Match, BS EN 1021-1 Cigarette, CA TB 117-2013
- **Environment** | 100% recyclable polyester
- **Labelling** | STANDARD 100 OEKO-TEX®
- **Maintenance** | For normal maintenance and cleaning, use often the vacuum cleaner with appropriate part for fabric, and if necessary, cover the part with a soft cloth. For a deeper cleaning use a dry detergent for fabrics. Do not use anything petroleum based.
- **Colours availability** | 10 standard colours - 50 total colours

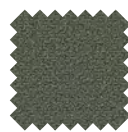
### Colour scale



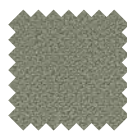
82A | Black



82C | Dark grey melange



82B | Dark grey



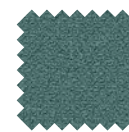
82D | Medium grey



82E | Warm grey



82M | Grey blue



82L | Light blue



82P | Green



82F | Light orange melange



82G | Brick melange

## LEATHER

Cuir pleine fleur teinté aniline avec un toucher soyeux. Les rides et les rayures sont visibles et améliorent son naturel.



### Specifications

- **Category E**
- **Composition** | Full grain bovine leather
- **Type of leather** | Corrected grain, pre-embossed leather
- **Origin** | Europe
- **Average size** | 5,0/5,5 m<sup>2</sup>
- **Thickness** | 1,2/1,3 mm
- **Tannage** | Chrome tannage
- **Dyeing** | Aniline
- **Finishing** | Polyurethane
- **Colour fastness** | 4/5
- **Light fastness** | Grade 6 UNI EN ISO 105-B02
- **Rubbing fastness** | Grade 5/5 (wet/dry) UNI EN ISO 11640
- **Ultimate tensile strength** | 140 KG cm<sup>2</sup>
- **Tear resistance** | >20N UNI EN ISO 3377-1
- **Adhesion of finishing** | >2N/10mm UNI EN ISO 11644
- **Flex Resistance** | 20000 Cycles (no damage) UNI EN ISO 5402
- **Ph value and extract** | Ph ≥ 3,5; ΔpH ≤ 0,7 UNI ISO 4045
- **Azo-dyes** | Not present (<30 ppm) CEN ISO/TS 17234
- **Pentachlorophenol content** | < 5 ppm CEN/TS 14994
- **Hexavalent chromium content** | < 3,0 mg/kg CEN/TS 14495
- **Formaldehyde content** | < 75 ppm CEN ISO/TS 17226-1
- **Flammability** | n/a
- **Environment** | n/a
- **Labelling** | n/a
- **Maintenance** | To cancel marks and spills a damp cloth should be used adding, only when necessary, a solution made with particularly delicate products such as mild pure soap. Avoid to rub the leather surface; spills should be dabbed of proceeding from its limits towards its centre. Do not use aggressive abrasive products (solvent, spills removers) steam or products for leather shoes. Once the cleaning process is completed, its surface needs to be immediately dried using a soft, dry cloth.
- **Colours availability** | 18 standard colours - 19 total colours

### Colour scale



## PREMIUM LEATHER

Soyeux et lisse, compact et résistant, plein et enveloppant. Le cuir Premium offre une gamme extrêmement complète pour une combinaison infinie de couleurs.



### Specifications

- **Category H**
- **Composition** | Full grain bovine leather
- **Type of leather** | Corrected grain
- **Origin** | Europe
- **Average size** | 5,0/5,5 m<sup>2</sup>
- **Thickness** | 1,2/1,4 mm
- **Tannage** | Chrome tannage
- **Dyeing** | Aniline
- **Finishing** | n/a
- **Colour fastness** | Grade 3-4 UNI EN ISO 11640
- **Light fastness** | Grade 6 UNI EN ISO 105-B02
- **Rubbing fastness** | Grade 3-4/4 (wet/dry) UNI EN ISO 11640
- **Ultimate tensile strength** | n/a
- **Tear resistance** | ≥20N UNI EN ISO 3377-1
- **Adhesion of finishing** | ≥2N/10mm UNI EN ISO 11644
- **Flex Resistance** | No cracks UNI EN ISO 5402
- **Ph value and extract** | Ph ≥ 3,5; ΔpH ≤ 0,7 UNI ISO 4045
- **Azo-dyes** | Not present (<30 ppm) CEN ISO/TS 17234
- **Pentachlorophenol content** | ≤ 1 mg/kg UNI EN ISO 17070
- **Hexavalent chromium content** | ≤ 3 mg/kg UNI EN ISO 17075
- **Formaldehyde content** | < 75 ppm CEN ISO/TS 17226-1
- **Flammability** | UNI EN 1021-1 Cigarette, UNI EN 1021-2 Match, NFPA 260/UFAC, IMO Resolution A652 (16), California TB 117 Section E
- **Environment** | Environmental Product Declaration & Process EPD (ISO 14025), Carbon Footprint of Product (ISO/TS 14067:2013)
- **Labelling** | Leather From Italy Full Cycle (UNI EN 16484), Der BLAue Engel (RAL UZ 148)
- **Maintenance** | To cancel marks and spills a damp cloth should be used adding, only when necessary, a solution made with particularly delicate products such as mild pure soap. Avoid to rub the leather surface; spills should be dabbed of proceeding from its limits towards its centre. Do not use aggressive abrasive products (solvent, spills removers) steam or products for leather shoes. Once the cleaning process is completed, its surface needs to be immediately dried using a soft, dry cloth.
- **Colours availability** | 12 standard colours - 110 total colours

### Colour scale



# EPOXIA

6 avenue Charles de Gaulle  
78150 Le Chesnay  
+33 1 39 66 00 77  
contact@epoxia.com  
www.epoxia.com



Rejoignez-nous sur nos réseaux sociaux

