

Dragonfly



2023

Piètement

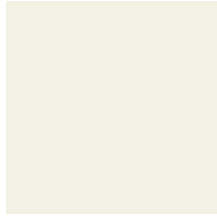
Métal



08



68



18



32



34



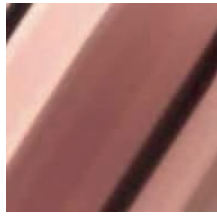
26



02



07



59

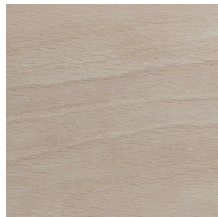


57

Bois



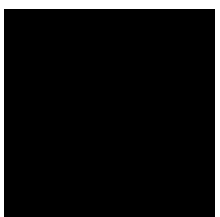
08



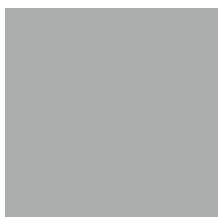
08

Coque

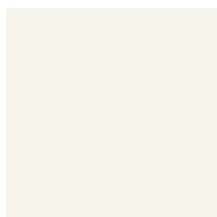
Polypropylène



7F



7V



7Y



8H



8Q



8R

GAZEBO - Similicuir - Cat.1

				
6	A22	71	151	680
				
717	726	792	991	1110
				
1128	1193	1194	1304	1305
				
1306	1307	1371	1809	1817
				
1830	1831	1915	1955	1984
				
2166	4008	4009	4915	4947
				
4975	4979	4981	6985	6986

Composition: 87,5% PVC

Plastifié, 12,5% Coton

Abrasion: 50.000 Martindale

Classement au feu:

UNI 9175:2008 Classe1 IM

NF P 92-503 : M2

BS EN 1021-1/2:1994 Entretien:

Nettoyer avec un chiffon humide

et savonneux et bien rincer à l'eau

claire. Ne pas utiliser de solvants,

eau de Javel, produits détergents

chimiques ou spray à faire briller.

Notes: Nous ne nous assumons

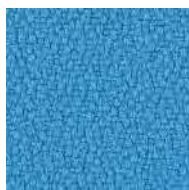
aucune responsabilité par rapport

au transfert de couleurs/pigments

éventuellement provoqué par le

vêtements et les accessoires

XTREME PLUS - Cat.2



YS004



YS005



YS009



YS024



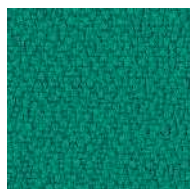
YS026



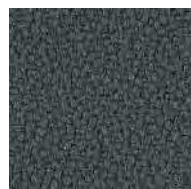
YS030



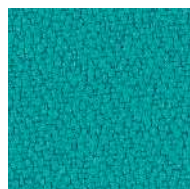
YS035



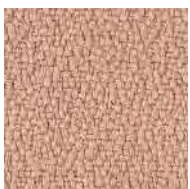
YS045



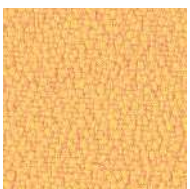
YS046



YS047



YS071



YS072



YS073



YS074



YS076



YS077



YS079



YS081



YS091



YS094



YS095



YS096



YS082



YS084



YS097



YS100



YS101



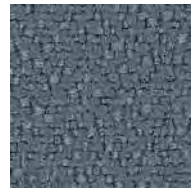
YS102



YS105



YS136



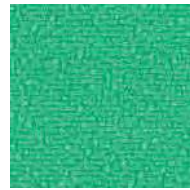
YS141



YS145



YS156



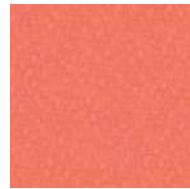
YS159



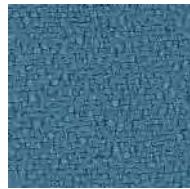
YS160



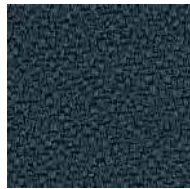
YS165



YS168



YS171



YS172



YS173



YS108

Composition:

100% Xtreme FR®
 Abrasion: 100.000 Martindale
 Solidité à la lumière:
 ISO 105-B02-1999
 Classement au feu:
 BS EN 1021 - 1:2006
 (cigarette)
 BS EN 1021 - 2:2006 (match)
 BS 7176:2007 Low Hazard
 BS 5852:2006 Section 4 Ignition
 Source 5
 BS 7176:2007 Medium Hazard
 UNI 8456 & UNI 9174 Class 1
 NF - P - 92 - 507 M1
 NF D 60-013:2006
 DIN 4102 B1 Classe 1IM M1

Nettoyage:

Lavable jusqu'à 60°C. Aspirer régulièrement.
 Essuyer avec une étoffe humide
 ou nettoyer à l'aide d'un produit
 approprié pour tissus d'ameu-
 blement.

Ecartis des coloris possibles.



MAGNUM- similicuir - Cat.2



Composition: 88% pvc, 7% Pl, 4% Co 1% PU (Polycarbonate)
 Abrasion (Martindale): 200.000
 Solidité à la lumière artificielle: 6 (xeno)

Classement au feu: **Italie** UNI 9175 Classe 1IM, **Europe** EN 1021-1:2006, **Angleterre** BS 5852 IS 0 (cigarette) BS 5852 IS 1 (match), Etats Unis **USA** California TB 117:2013, **Naval** FTP Code 307(88):10 Annex 1 part 8 ex. IMO res. A 652 (16)

Sur demande (minimum quantités 300mtl): **France** NF-P 503 Classe M1, **Allemande** DIN 4102-1 Classe B1, **Angleterre** BS 5852 IS CRIB 5

Caractéristiques: Elastique, antifongique, antimicrobien, hygiénique et inodores.

Notes: Nous ne nous assumons aucune responsabilité par rapport au transfert de couleurs/pigments éventuellement provoqué par le vêtements et les accessoires



Notices:

Les couleurs reprises dans ces pages sont données uniquement à titre indicatif. Aussi fidèles que puissent être les reproductions de couleurs sur catalogue et des échantillons ceux-ci sont sujets aux réserves habituelles et peuvent être modifiés suivant les exigences de la production.

MAGNUM- similicuir - Cat.2



602



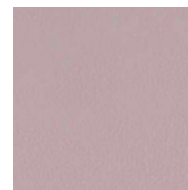
603



604



606



607



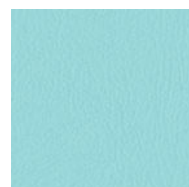
700



701



702



703



704



706



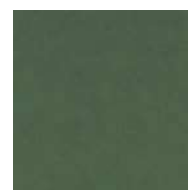
707



708



800



801



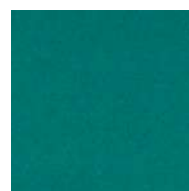
802



803



804



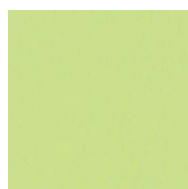
805



806



807



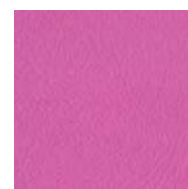
808



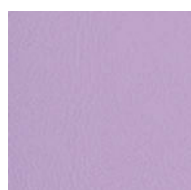
809



810



900



901



902

Composition: 88% pvc, 7% Pl, 4% Co 1% PU (Polycarbonate)
Abrasion (Martindale): 200.000
Solidité à la lumière artificielle: 6 (xeno)

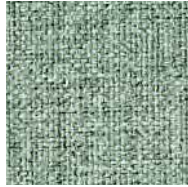
Classement au feu: **Italie** UNI 9175 Classe 1IM, **Europe** EN 1021-1:2006, **Angleterre** BS 5852 IS 0 (cigarette) BS 5852 IS 1 (match), Etats Unis **USA** California TB 117:2013, **Naval** FTP Code 307(88):10 Annex 1 part 8 ex. IMO res. A 652 (16)

Sur demande (minimum quantités 300mtl): **France** NF-P 503 Classe M1, **Allemande** DIN 4102-1 Classe B1, **Angleterre** BS 5852 IS CRIB 5

Caractéristiques: Elastique, antifongique, antimicrobien, hygiénique et inodores.

Notes: Nous ne nous assumons aucune responsabilité par rapport au transfert de couleurs/pigments éventuellement provoqué par le vêtements et les accessoires

RIVET- Cat.2



EGL 01



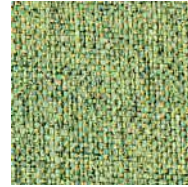
EGL 03



EGL 04



EGL 05



EGL 07

Composition:
 100% Repreve® Polyester Recyclé
 Abrasion: >50.000 Martindale
 Solidité a la lumière artificielle: 6
 Résistance au frottement Humide/Sec 4 ISO 105-X12
 Classement au feu:
 EN 1021 - 1/2
 BS 7176 Low Hazard
 UNI 9175 Classe 1 IM
 Ecologia: EU Ecolabel

Entretien:
 Aspirer régulièrement. Essuyer avec un chiffon humide.



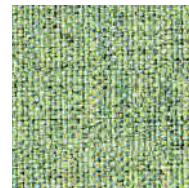
EGL 08



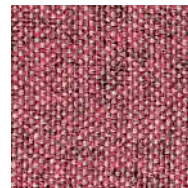
EGL 09



EGL 10



EGL 11



EGL 12



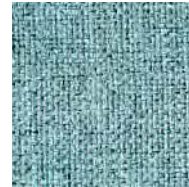
EGL 13



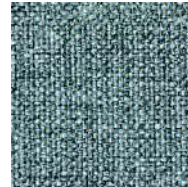
EGL 14



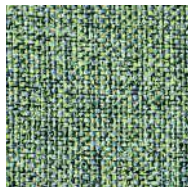
EGL 15



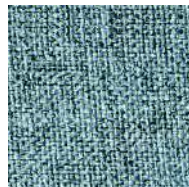
EGL 16



EGL 18



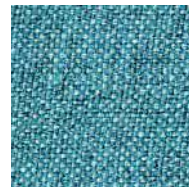
EGL 19



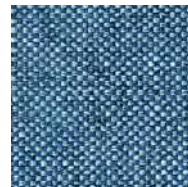
EGL 20



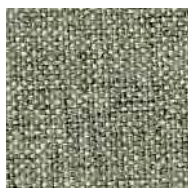
EGL 21



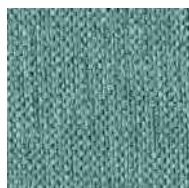
EGL 23



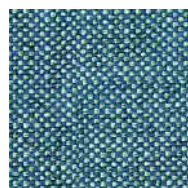
EGL 24



EGL 25



EGL 26



EGL 27



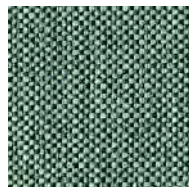
EGL 31



EGL 33



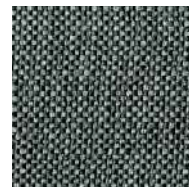
EGL 32



EGL 34



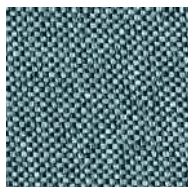
EGL 35



EGL 36



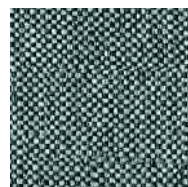
EGL 37



EGL 48



EGL 49



EGL 50



FLAME RESISTANT



MAIN LINE FLAX- Cat.2



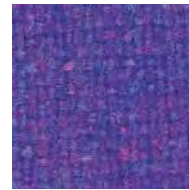
MLF01



MLF02



MLF03



MLF04



MLF05

Composition:

75% Laine Vierge, 25% Lin
 Abrasion: >50.000 Martindale
 Solidité a la lumiere artificielle: 5
 Resistance au frottement:
 Mouillé 3, Sec 4 (ISO 105 - X12)
 Classement au feu:
 EN 1021 - 1 (cigarette)
 EN 1021 - 2 (allumette)
 NFPA 260 + UFAC Class 1
 BS 7176 Low Hazard
 BS 5852 Ignition Source 5
 BS 7176 Medium Hazard
 NF D 60-013
 ONORM B 3825 & A 3800-1
 UNI 9175 Classe 1 IM
 BS 5867-2 Type B Curtains &
 Drapes



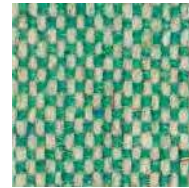
MLF06



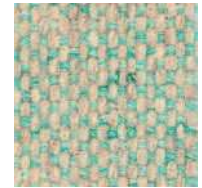
MLF07



MLF08



MLF09



MLF10



MLF11



MLF12



MLF13



MLF14



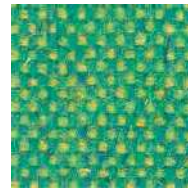
MLF15



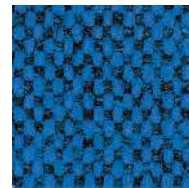
MLF16



MLF17



MLF18



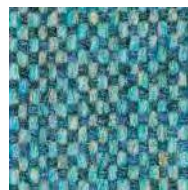
MLF19



MLF20



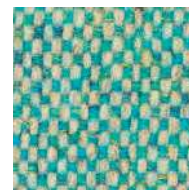
MLF21



MLF22



MLF23



MLF24



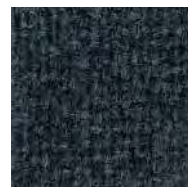
MLF25



MLF26



MLF27



MLF28



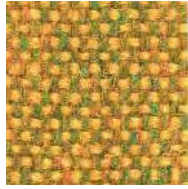
MLF29



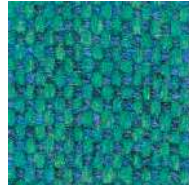
MLF30



MAIN LINE FLAX- Cat.2



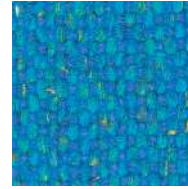
MFL31



MFL32



MFL33



MFL34



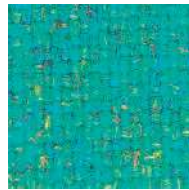
MFL35

Composition:

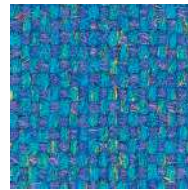
75% Laine Vierge, 25% Lin
Abrasion: >50.000 Martindale
Solidité à la lumière artificielle: 5
Résistance au frottement:
Mouillé 3, Sec 4 (ISO 105 - X12)
Classement au feu:
EN 1021 - 1 (cigarette)
EN 1021 - 2 (allumette)
NFPA 260 + UFAC Class 1
BS 7176 Low Hazard
BS 5852 Ignition Source 5
BS 7176 Medium Hazard
NF D 60-013
ONORM B 3825 & A 3800-1
UNI 9175 Classe 1 IM
BS 5867-2 Type B Curtains &
Drapes



MFL36



MFL37



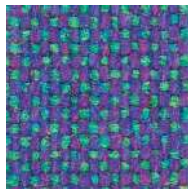
MFL38



MFL39



MFL40



MFL41

BLAZER - Cat.3

Composition:
 100% Laine vierge.
 Teintures non métalliques
 Écologique: Renouvelable et biodégradable
 Abrasion (Martindale): 50.000
 Solidité à la lumière:
 5 (ISO 105 – B02.1999)
 Résistance au frottement:
 Humide: 4, Sec: 4 :(ISO 105 – x12-2002)
 Classement au feu: **BS EN 1021 – 1-2006 (Cigarette), BS EN 1021 – 2.2006 (Allumette), BS 7176-2007 Low Hazard, UNI 9175 Classe 1IM (FR PU 35 Kg/ m3)**



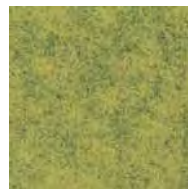
CUZ 1E



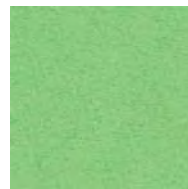
CUZ 1F



CUZ 1J



CUZ 1K



CUZ 1L



CUZ 1M



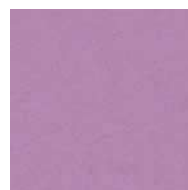
CUZ 1N



CUZ 1P



CUZ 1R



CUZ 1T



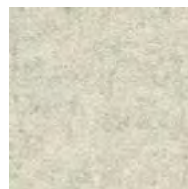
CUZ 1V



CUZ 1W



CUZ 1Y



CUZ 2Q



CUZ 2R



CUZ 2S



CUZ 2T



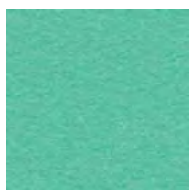
CUZ 2U



CUZ 2W



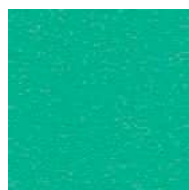
CUZ 2X



CUZ 2Y



CUZ 2Z



CUZ 3A



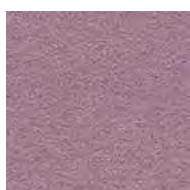
CUZ 3B



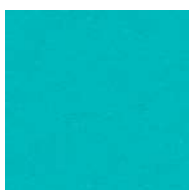
CUZ 3C



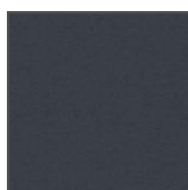
CUZ 3D



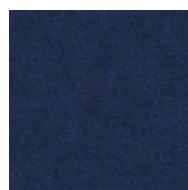
CUZ 3E



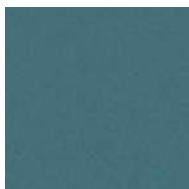
CUZ 02



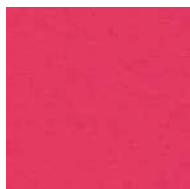
CUZ 08



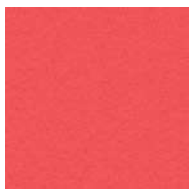
CUZ 09



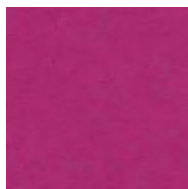
CUZ 12



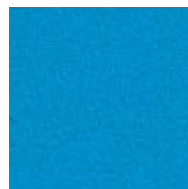
CUZ 13



CUZ 18



CUZ 21



CUZ 26



BLAZER - Cat.3



CUZ 3D



CUZ 3E



CUZ 02



CUZ 08



CUZ 09

Composition:

100% Laine vierge.

Teintures non métalliques

Écologique: Renouvelable et

biodégradable

Abrasion (Martindale): 50.000

Solidité à la lumière:

5 (ISO 105 - B02.1999)

Résistance au frottement:

Humide: 4, Sec: 4 (ISO 105 -

x12-2002)

Classement au feu: **BS EN**

1021 - 1-2006 (Cigarette),

BS EN 1021 - 2.2006

(Allumette), BS 7176-2007

Low Hazard, UNI 9175

Classe 1IM (FR PU 35 Kg/

m3)



CUZ 12



CUZ 13



CUZ 18



CUZ 21



CUZ 26



CUZ 28



CUZ 30



CUZ 31



CUZ 33



CUZ 35



CUZ 39



CUZ 47



CUZ 53



CUZ 58



CUZ 62



CUZ 63



CUZ 67



CUZ 82

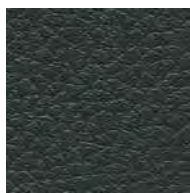


CUZ 86

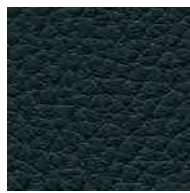


CUZ 90

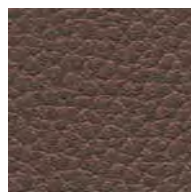
GINKGO - Similicuir - Cat.3



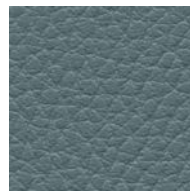
013320 01



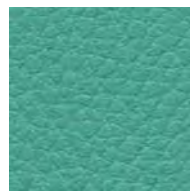
013320 02



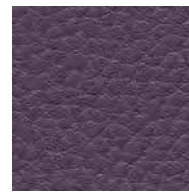
013320 03



013320 04



013320 06



013320 07



013320 08



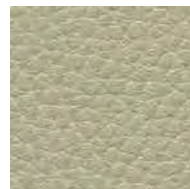
013320 09



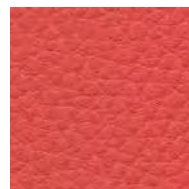
013320 11



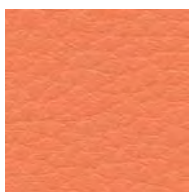
013320 12



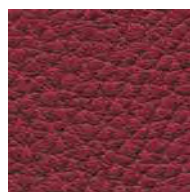
013320 13



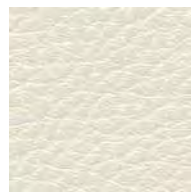
013320 14



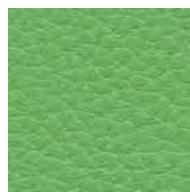
013320 15



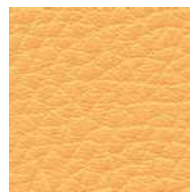
013320 16



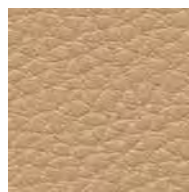
013320 19



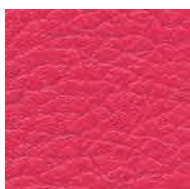
013320 20



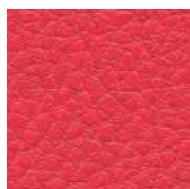
013320 21



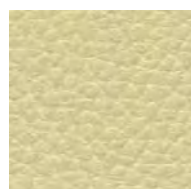
013320 23



013320 25



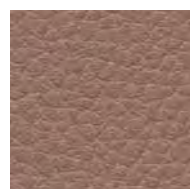
013320 26



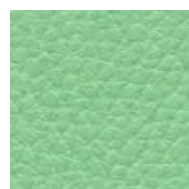
013320 27



013320 32



013320 38



013320 42



013320 44



013320 45



013320 46



013320 47



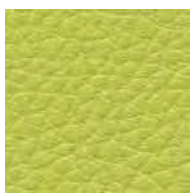
013320 48



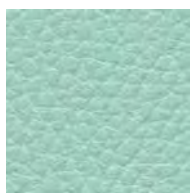
013320 49



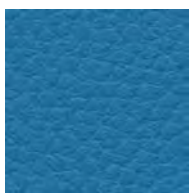
013320 50



013320 52



013320 59



013320 60



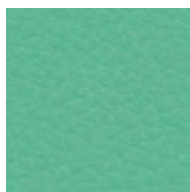
013320 63



013320 64



013320 65



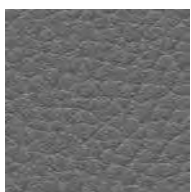
013320 66



013320 67



013320 68



013320 43

Composition:

PVC 85%, Coton 15%

Abrasion: 150.000 Martindale

Solidité à la lumière artificielle: 6

Classement au feu:

Europe EN 1021.1-2-3

Angleterre BS 5852 crib 5,

Allemande B2 (DIN 4102),

France M1 (NFP 92503);

AM 18, Usa California Bulletin

117

Naval IMO A652;

Aviation JAR 25/FAR 25.853

Notes: Attention aux transferts de

couleurs sur les tissus synthétique

clair, en particulier du fait des

colorants non fixés de certains

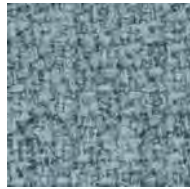
vêtements (jeans et dérivé) qui

pourraient laisser des traces

difficiles à nettoyer.



STEP MELANGE - Cat.3



60004



60011



60021



60090

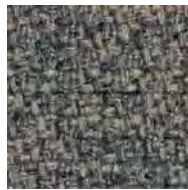


60092

Composition: 100% Trevira
 Abrasion: 100.000 Martindale
 Solidité a la lumière: 5-7
 Resistance au frottement: 4-5 (Humide) – 4-5 (Sec)
 Classement au feu 60004
 EN1021 1&2
 BS5852 0&1
 BS5852 Crib 5
 DIN 4102-B1
 CAL 117E
 FAR/JAR 25.853 (a) (i) (ii) Onorm
 B3825 B1+Q1 NFP92-503-M1
 CA TB 117-2013
 BS7176 Medium hazard
 AM18
 NF D 60-013
 IMO MSC 307 (88) Annex 1 part 8
 MED certificate IMO
 UNI 9175 Class 1 EMME



61102



61103



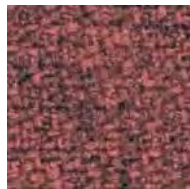
61104



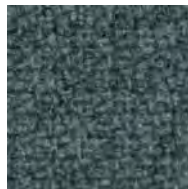
61149



61150



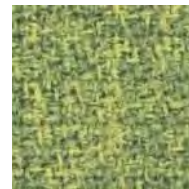
61151



61152



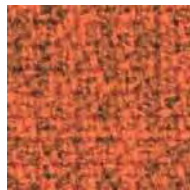
62057



62073



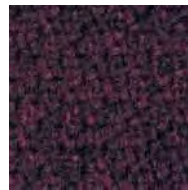
63075



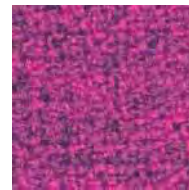
63082



64013



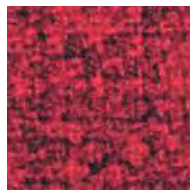
64159



64177



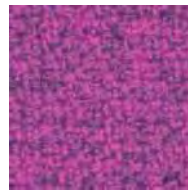
64178



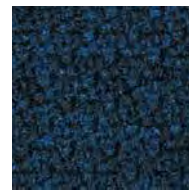
64179



64181



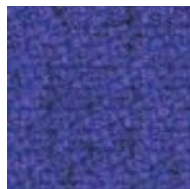
64182



65011



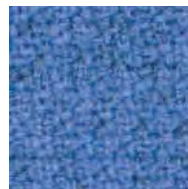
65018



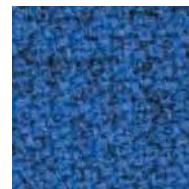
65023



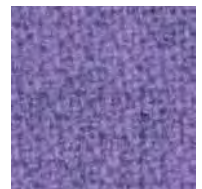
65047



65090



65091



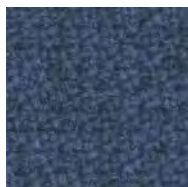
65092



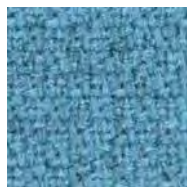
STEP MELANGE - Cat.3



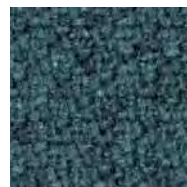
65093



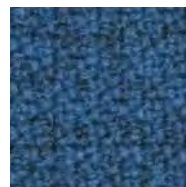
65094



66018



66019



66148

Composition: 100% Trevira
Abrasion: 100.000 Martindale
Solidité a la lumière: 5-7
Résistance au frottement: 4-5
(Humide) – 4-5 (Sec)
Classement au feu 60004
EN1021 1&2
BS5852 0&1
BS5852 Crib 5
DIN 4102-B1
CAL 117E
FAR/JAR 25.853 (a) (i) (ii) Onorm
B3825 B1+Q1 NFP92-503-M1
CA TB 117-2013
BS7176 Medium hazard
AM18
NF D 60-013
IMO MSC 307 (88) Annex 1 part 8
MED certificate IMO
UNI 9175 Class 1 EMME



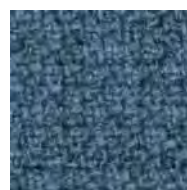
66149



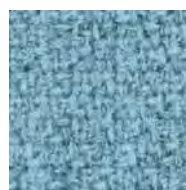
66150



66151



66152



67004



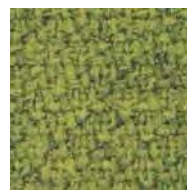
67007



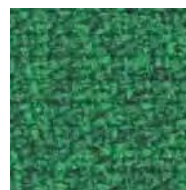
67072



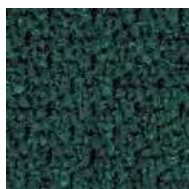
68118



68119



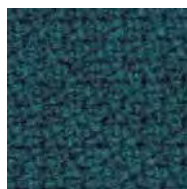
68120



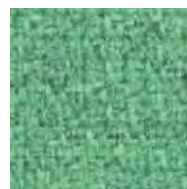
68121



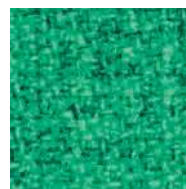
68157



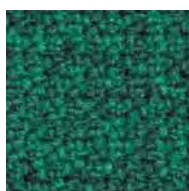
68158



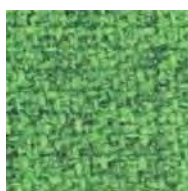
68159



68160



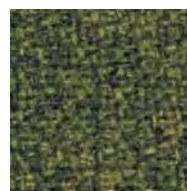
68161



68162



68163



68165

SILVERTEX - similicuir - Cat.3



Composition:

100% Vinyle
 Abrasion: > 300.000 Martindale (EN ISO 12947:1999 Part 2)
 Solidité a la lumiere artificielle: 7
 Classement au feu:
 UE: EN 1021 Part 1 and 2
 US: CAL TB 117-2013, section E
 ES: UNE 23.727-90 1R / M.2
 FR: NF P 92-503 / M2
 DE: DIN 4102 B2
 IT: UNI 9175 (1987) / UNI 9175 / FA1 (1994) Class 1.JM
 AT: ÖNORM B 3825
 AT: ÖNORM A 3800 Teil 1
 USA: FMVSS 302
 USA: FAR 25/853
 EN 71-2: 2006 + A1: 2007 - Toy safety - Part 2: Flammability
 Résistance aux UV: XENOTEST
 DIN 54004 / NTC 1479 (échelle de laines bleues)

Détails techniques:

Antibacterial,
 Antifungal, Antimycotic,
 Finition Antitache et antistatique.



PERMABLOK³
 ADVANCED VINYL PROTECTION

SILVERTEX - similicuir - Cat.3



122-2102

122-2103

122-2104

122-2105

122-3001

Composition:

100% Vinyle
 Abrasion: >300.000 Martindale (EN ISO 12947:1999 Part 2)
 Solidité a la lumiere artificielle: 7
 Classement au feu:
 UE: EN 1021 Part 1 and 2
 US: CAL TB 117-2013, section E
 ES: UNE 23.727-90 1R / M.2
 FR: NF P 92-503 / M2
 DE: DIN 4102 B2
 IT: UNI 9175 (1987) / UNI 9175 / FA1 (1994) Class 1.IM
 AT: ÖNORM B 3825
 AT: ÖNORM A 3800 Teil 1
 USA: FMVSS 302
 USA: FAR 25/853
 EN 71-2: 2006 + A1: 2007 - Toy safety - Part 2: Flammability
 Résistance aux UV: XENOTEST
 DIN 54004 / NTC 1479 (échelle de laines bleues)

Détails techniques:

Antibacterial,
 Antifungal, Antimycotic.
 Finition Antitache et antistatique.



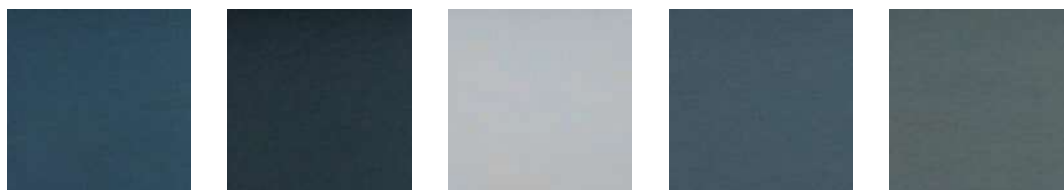
122-3007

122-3066

122-3067

122-3068

122-4001



122-4002

122-4003

122-4004

122-4010

122-4011



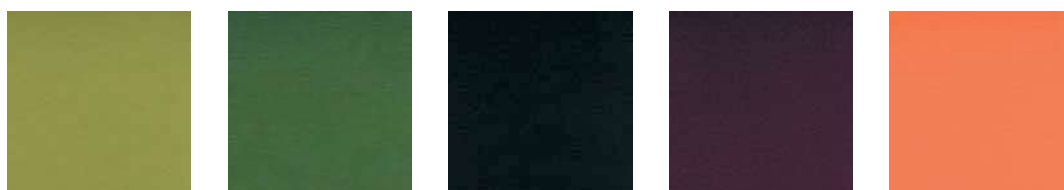
122-4012

122-4024

122-5008

122-5009

122-5010



122-5019

122-5020

122-5063

122-6004

122-6062



122-6065

122-7001

122-7002

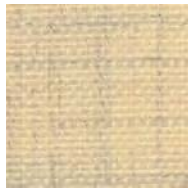
122-9001

122-9002

REMIX 3 - Cat.3

Composition:

90% Laine vierge peigné, 10% Nylon. Teinture en bourre.
 Résistance à l'abrasion: >100.000 Martindale
 EN ISO 12947.
 Résistance à la lumière: (ISO) 5-7.
 Résistance au frottement: 4-5 sec, 4 mouillé.
 Boulochage (EN ISO) 4.
 Normes au feu: AS/NZS 1530.3, BS 5852 crib 5 with treatment, BS 5852 ignition source 3, BS 5852 part 1, IMO FTP Code 2010 Part 7 with treatment, IMO FTP Code 2010 Part 8, NF D 60 013, NFPA 260, SN 198 898 5.3 with treatment, UNI 9175 1IM, US Cal. Bull. 117-2013, EN 1021-1/2, AS/NZS 3837 class 2, ÖNORM B1/Q1, ASTM E84 Class A Unadhered, ASTM E84 Class A Adhered, GB 50222 B1 with treatment (Chinese)



113



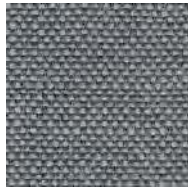
123



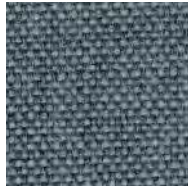
126



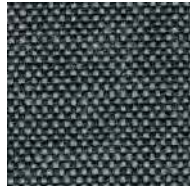
133



136



143



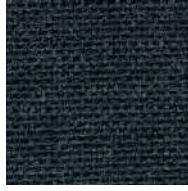
152



163



173



183



196



223



233



242



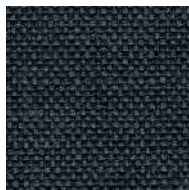
252



266



276



286



296



326



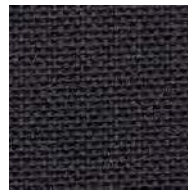
346



356



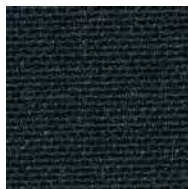
362



373



383



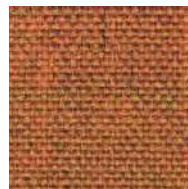
393



406



412



422



433



443



452



516



536



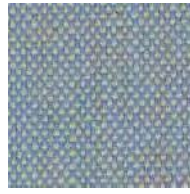
543



REMIX 3 - Cat.3



566



606



612



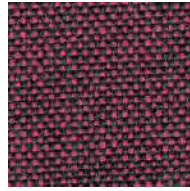
632



643



653



662



672



682



686

Composition:

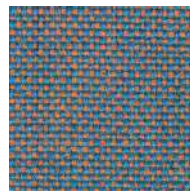
90% Laine vierge peigné, 10% Nylon. Teinture en bourre.
 Résistance à l'abrasion: >100.000 Martindale
 EN ISO 12947.
 Résistance à la lumière: (ISO) 5-7.
 Résistance au frottement: 4-5 sec, 4 mouillé.
 Boulochage (EN ISO) 4.
 Normes au feu: AS/NZS 1530.3, BS 5852 crib 5 with treatment, BS 5852 ignition source 3, BS 5852 part 1, IMO FTP Code 2010 Part 7 with treatment, IMO FTP Code 2010 Part 8, NF D 60 013, NFPA 260, SN 198 898 5.3 with treatment, UNI 9175 11M, US Cal. Bull. 117-2013, EN 1021-1/2, AS/NZS 3837 class 2, ONORM B1/Q1, ASTM E84 Class A Unadhered, ASTM E84 Class A Adhered, GB 50222 B1 with treatment (Chinese)



692



716



722



733



743



753



762



773



783



796



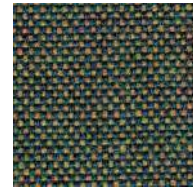
816



823



836



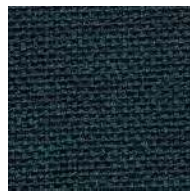
842



852



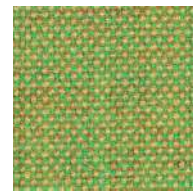
866



873



906



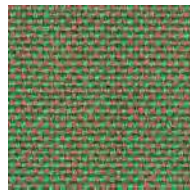
912



923



933



942



954



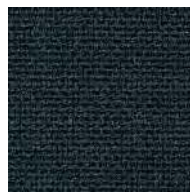
962



973



982



996

STEELCUT TRIO 3 - Cat.4



105 113 124 133 153



176 195 205 213 226

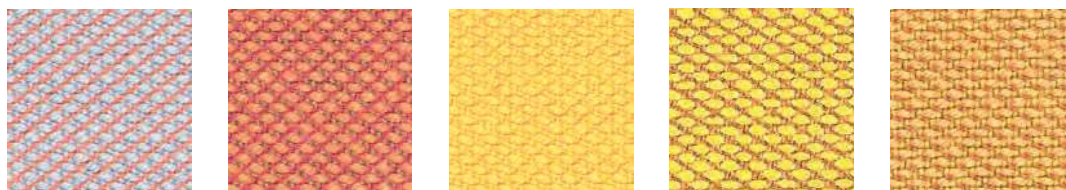
Composition: 90% Laine vierge peigné, 10% Nylon
 Abrasion: 100.000 Martindale
 EN ISO 12947
 Solidité à la lumière:
 Note 5-7, ISO 105-B02
 Résistance au frottement:
 Note 3-4, EN ISO 12945
 Classement au feu:
 EN 1021-1/2,
 BS 5852, ignition source 2-3
 DIN 4102 B2, Önorm B1/Q1
 NF D 60 013, Classe 1IM
 US Cal.Tech.Bull.117, Sec.E
 IMO A.652(16)



236 246 253 266 276



283 336 376 383 416



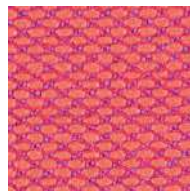
426 436 446 453 466



476 506 515 526 533



STEELCUT TRIO 3 - Cat.4



553



576



616



636



645



666



686



713

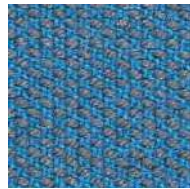


716

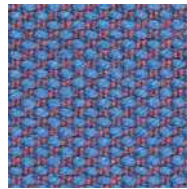


746

Composition: 90% Laine vierge peigné, 10% Nylon
 Abrasion: 100.000 Martindale
 EN ISO 12947
 Solidité à la lumière:
 Note 5-7, ISO 105-B02
 Résistance au frottement:
 Note 3-4, EN ISO 12945
 Classement au feu:
 EN 1021-1/2,
 BS 5852, ignition source 2-3
 DIN 4102 B2, Önorm B1/Q1
 NF D 60 013, Classe 1IM
 US Cal.Tech.Bull.117, Sec.E
 IMO A.652(16)



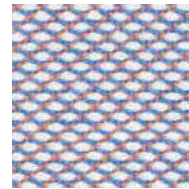
756



776



796



806



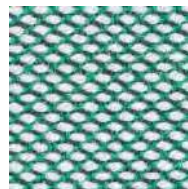
865



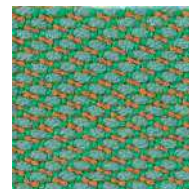
883



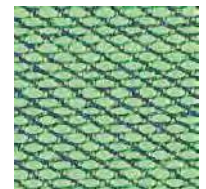
906



916



946



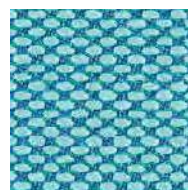
953



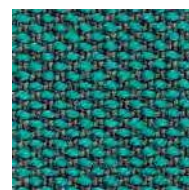
966



976



983



996

ATLAS - Cat.4

Composition:

90% Laine vierge peigné, 10% Nylon. Teinture en bourre.
 Résistance à l'abrasion: >100.000 Martindale
 EN ISO 12947.
 Résistance à la lumière: (ISO) 6-7.
 Résistance au frottement: 4-5 sec, 4-5 mouillé.
 Boulochage (EN ISO) 4-5.
 Normes au feu: BS 5852 crib 5 with treatment, BS 5852 ignition source 3, BS 5852 part 1, IMO FTP Code 2010 Part 8, NF D 60 013, SN 198 898 5.3 with treatment, UNI 9175 1IM, US Cal. Bull. 117-2013, EN 1021-1/2, ÖNORM B1/Q1, AS/NZS 3837 class 2.



971

981

CANVA - Cat.4

Composition:

90% Laine vierge peignée, 10% Nylon. Teinture en bourre.
 Résistance à l'abrasion: >100.000 Martindale EN ISO 12947.
 Résistance à la lumière: (ISO) 5-6.
 Résistance au frottement: 4-5 sec, 4-5 mouille.
 Boulochage (EN ISO) 4.
 Normes au feu: AS/NZS 1530.3, BS 5852 crib 5 with treatment, BS 5852 ignition source 3, BS 5852 part 1, IMO FTP Code 2010 Part 8, NF D 60 013, NFPA 260, SN 198 898 5.3 with treatment, UNI 9175 1IM, US Cal. Bull. 117-2013, EN 1021-1/2, ÖNORM B1/Q1.



ZENITH - cuir souple - Cat.5



9000



9001



9002

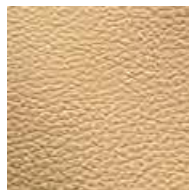


9003



9004

Composition: Bovine, rectifié ou corrigé et grain imprimés
Épaisseur: 08-1.0mm.
Superficie moyenne: 3.8 - 4.0 m2
Pigmentation à l'eau avec application d'une résine que donne un touche très souple et ciré. Aspect: opaque.
Eviter la lumière directe du soleil.
Eviter l'exposition à toute source de chaleur.
Resistance aux frottements - a sec 500 cycles: > =4 (UNI EN ISO 11640:1998)
Resistance aux frottements - humide 250 cycles: > =4 (UNI EN ISO 11640:1998)
Resistance a la lumière artificielle: > = 5 (UNI EN ISO 150 B02 MET.5)
Comportement de combustion cigarettes et allumettes : BS 5852:1979 - BS EN 1021-1-2.2006



9005



9006



9007



9008



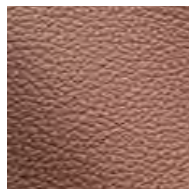
9009



9010



9011



9012



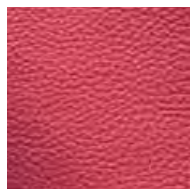
9013



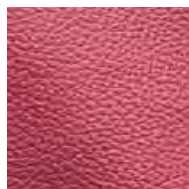
9014



9015



9016



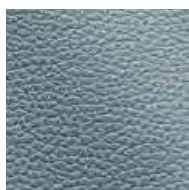
9017



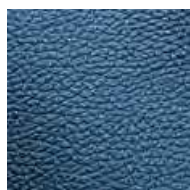
9018



9019



9020



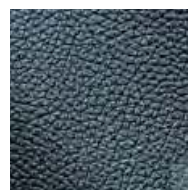
9021



9022



9023



9024

ZENITH - cuir souple - Cat.5



9025



9026



9027



9028



9029

Composition: Bovine, rectifié ou corrigé et grain imprimés
 Epaisseur: 08-1.0mm.
 Superficie moyenne: 3.8 - 4.0 m2
 Pigmentation à l'eau avec application d'une résine que donne un touche très souple et ciré . Aspect: opaque.
 Eviter la lumière directe du soleil. Eviter l'exposition à toute source de chaleur.
 Resistance aux frottements - a sec 500 cycles: > =4 (UNI EN ISO 11640:1998)
 Resistance aux frottements - humide 250 cycles: > =4 (UNI EN ISO 11640:1998)
 Resistance a la lumière artificielle: >= 5 (UNI EN ISO 150 B02 MET.5)
 Comportement de combustion cigarettes et allumettes : BS 5852:1979 - BS EN 1021-1-2.2006



9030



9031



9032



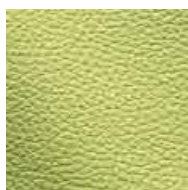
9033



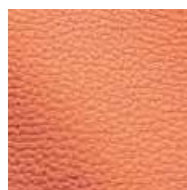
9034



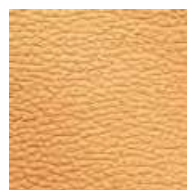
9035



9036



9037



9038



9039



9040



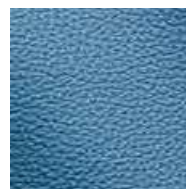
9041



9042



9043



9044



9045



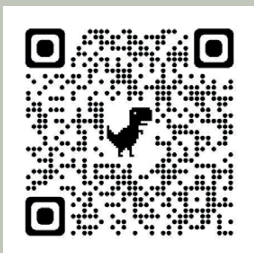
9046



9047

EPOXIA

6 avenue Charles de Gaulle
78150 Le Chesnay
+33 1 39 66 00 77
contact@epoxia.com
www.epoxia.com



Rejoignez-nous sur nos réseaux sociaux

