

# FORMES ET COULEURS

## Collection KICCA

GARANTIE  
**2**  
ANS

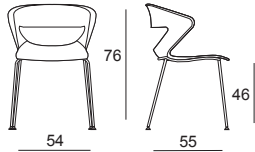
MONTAGE  
**OFFERT\***  
\* voir nos conditions

MADE IN  
EUROPE

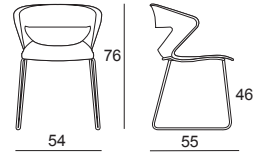
epoxia

01 39 66 00 77

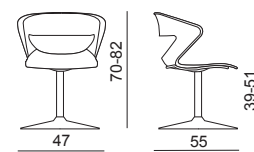
### Chaise et tabouret



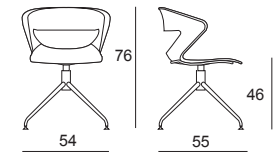
Chaise 4 pieds



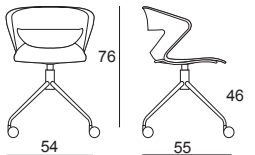
Chaise pied luge



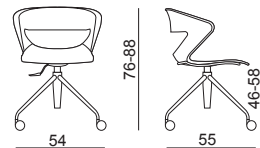
Chaise pivotante



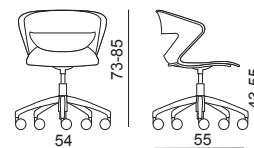
Chaise pivotante 4 pieds



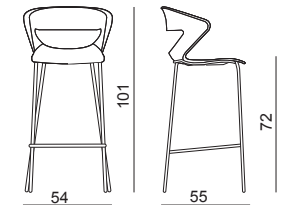
Chaise pivotante avec roulettes



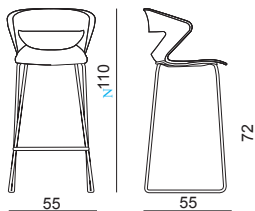
Chaise pivotante réglable en hauteur



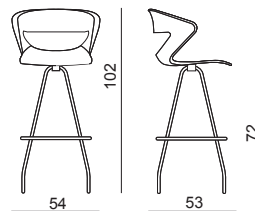
Chaise pivotante sur roulettes



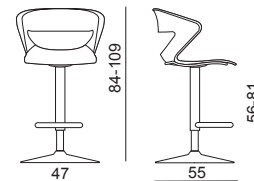
Tabouret 4 pieds



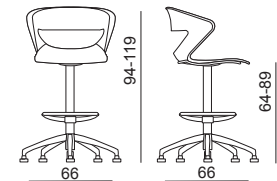
Tabouret pied luge



Tabouret pivotant



Tabouret pivotant réglable en hauteur



Tabouret pivotant sur patins

# FORMES ET COULEURS

## Collection KICCA



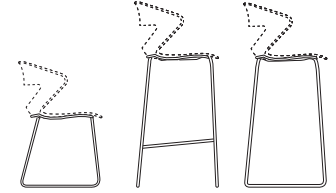
**epoxia**

01 39 66 00 77

### Structure métallique - *piètement*



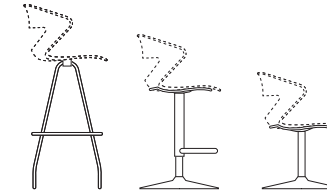
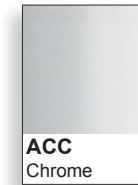
### Structure métallique - *piètement*



### Structure métallique - *piètement*



### Structure métallique - *piètement*



### Structure métallique - *base pour piètement étoile (patins ou roulettes)*



APN acier recouvert polypropylène



AL7 en fonte d'aluminium polie



AL4 en fonte d'aluminium polie



AL5 en fonte d'aluminium polie



APS en nylon noir



AL8 en fonte d'aluminium polie



AL9 en fonte d'aluminium vernie



AL6 en fonte d'aluminium polie

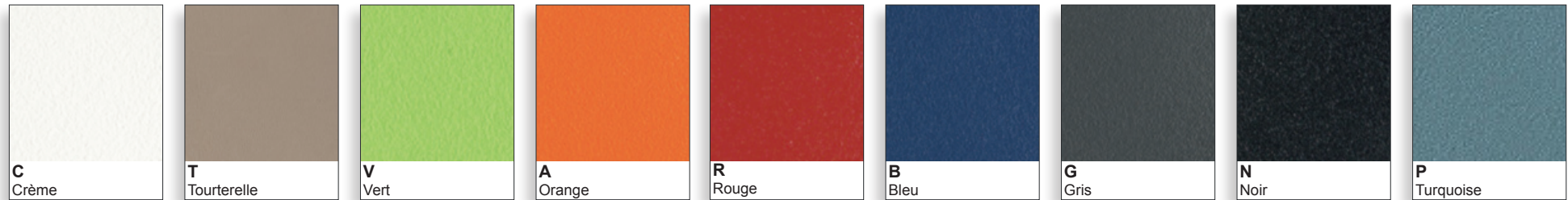


APG nylon gris

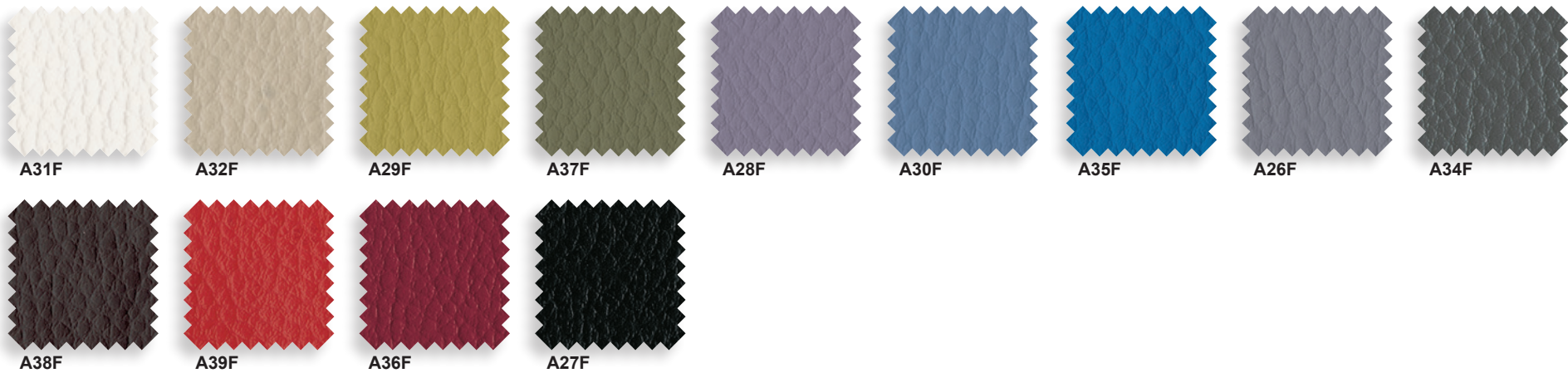


APW en nylon blanc

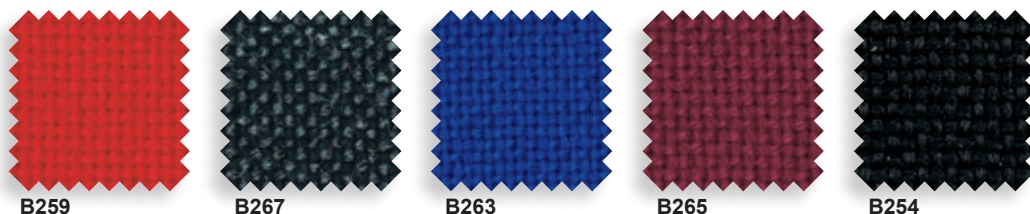
### Polypropylène - assise



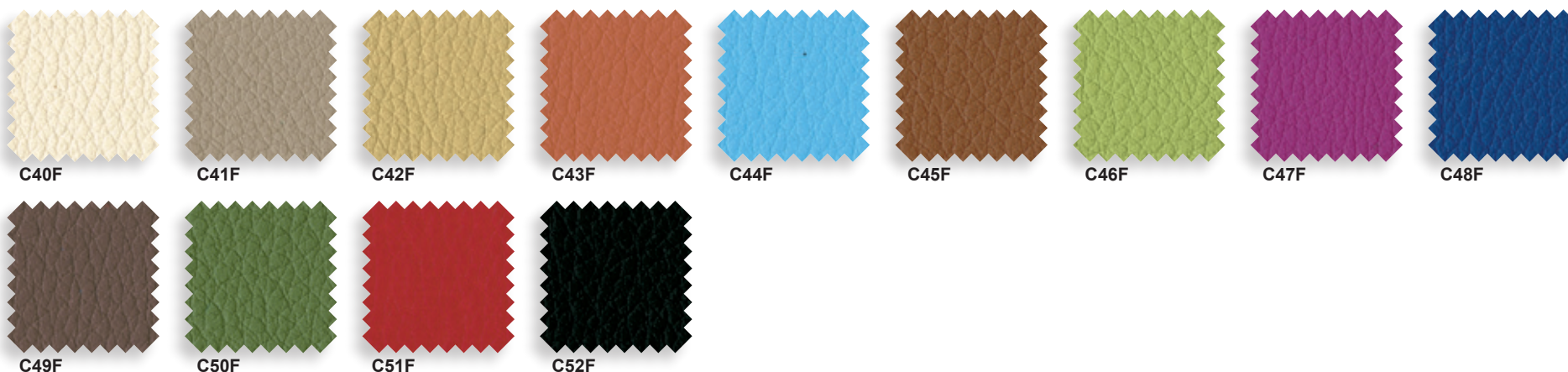
### Planet - imitation cuir catégorie A - Martindale 100 000 - 87,5% PVC 12,5% coton. Non feu EN1021.



Tissu - catégorie B - Martindale 80 000 - 100% polypropylène.

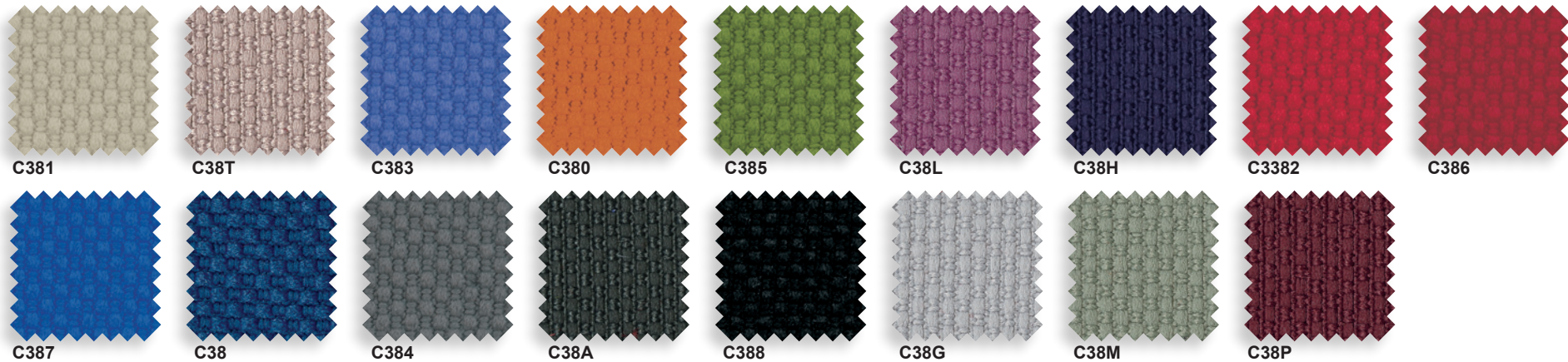


Skill - imitation cuir catégorie C - Martindale 60 000 - 76% PVC, 2%PU, 22%PES. Non feu EN 1021.

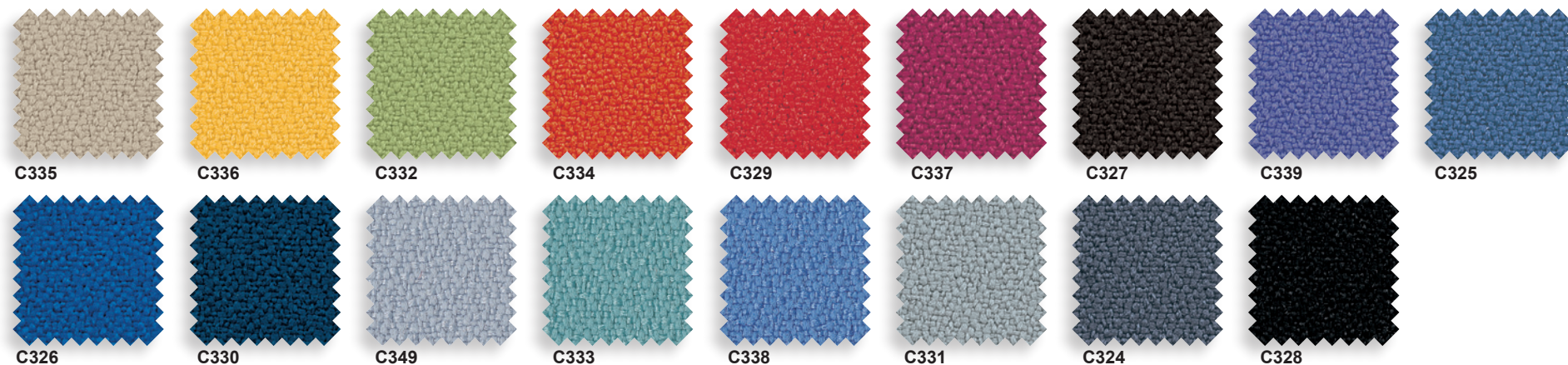




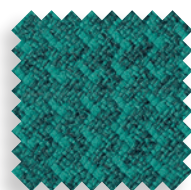
### Trevi - tissu catégorie C - Martindale 70 000 - 100% Polyester



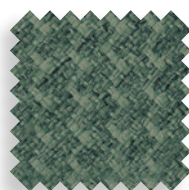
### Xtreme - tissu catégorie C - Martindale 100 000 - 100% Xtreme. Non feu EN 1021.



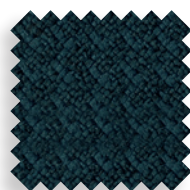
Bond - tissu catégorie D - Martindale 100 000 - 98% Polyester recyclé, 2% polyester. Non feu EN 1021.



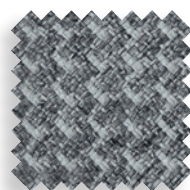
D51B



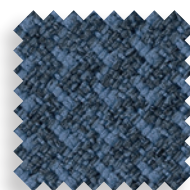
D52B



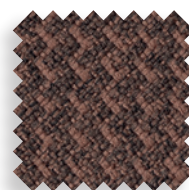
D53B



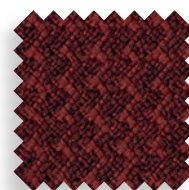
D54B



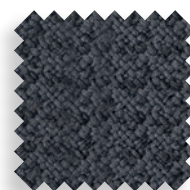
D55B



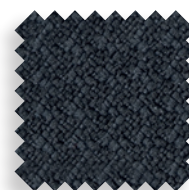
D56B



D57B

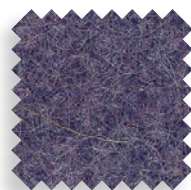


D58B



D59B

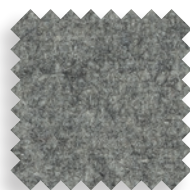
Fenice - tissu catégorie D - Martindale 100 000 - 75% laine, 25% Polyamide. Non feu EN 1021.



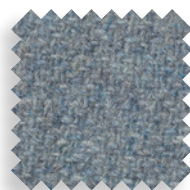
D501



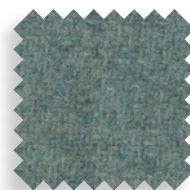
D502



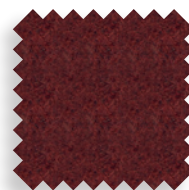
D503



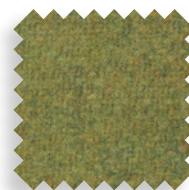
D504



D505



D506



D507

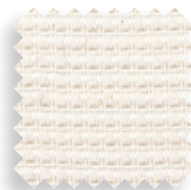


D508

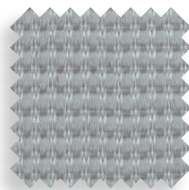


D509

Tissu résille - catégorie D - Martindale 100 000 - 64% PL, 36% PA.



D218



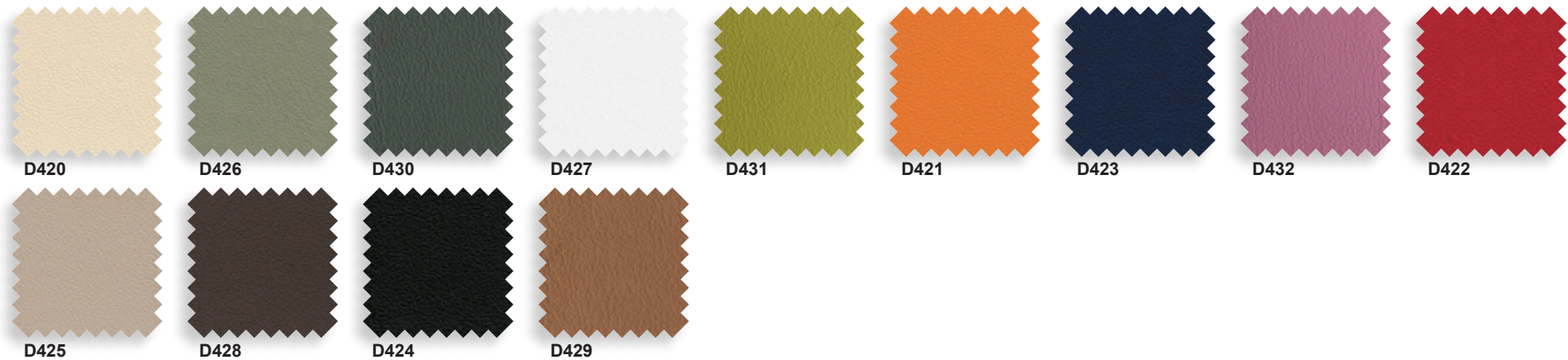
D221



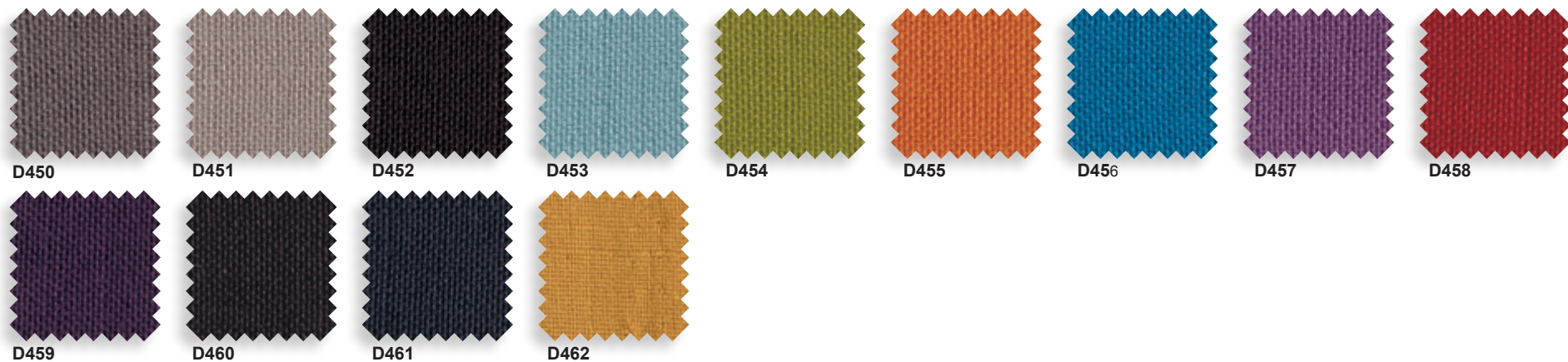
D222



Extrema Ultra Fresh - imitation cuir catégorie D - Martindale 150 000 - 63% Polyuréthane, 29% coton, 8% PES. Non feu 1021.



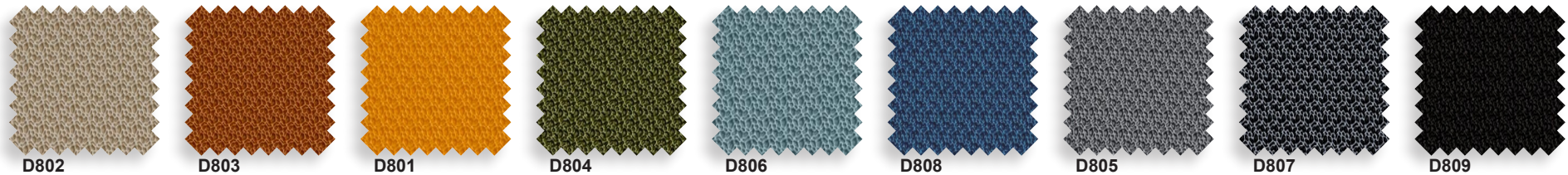
Esedra - tissu catégorie D - Martindale 60 000 - 100% PES. Non feu 1021.



Extrema Ikon - imitation cuir catégorie D - Martindale 150 000 - 63% Polyuréthane, 29% coton, 8% PES.  
Non feu 1021.



Hitch® - vinyl catégorie D - Martindale >100 000 - 100% Polyester



Repetto - catégorie D - Martindale 100 000 - 100% Polyester. Non feu EN 1021.

